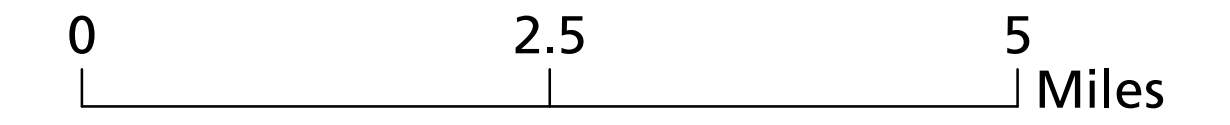


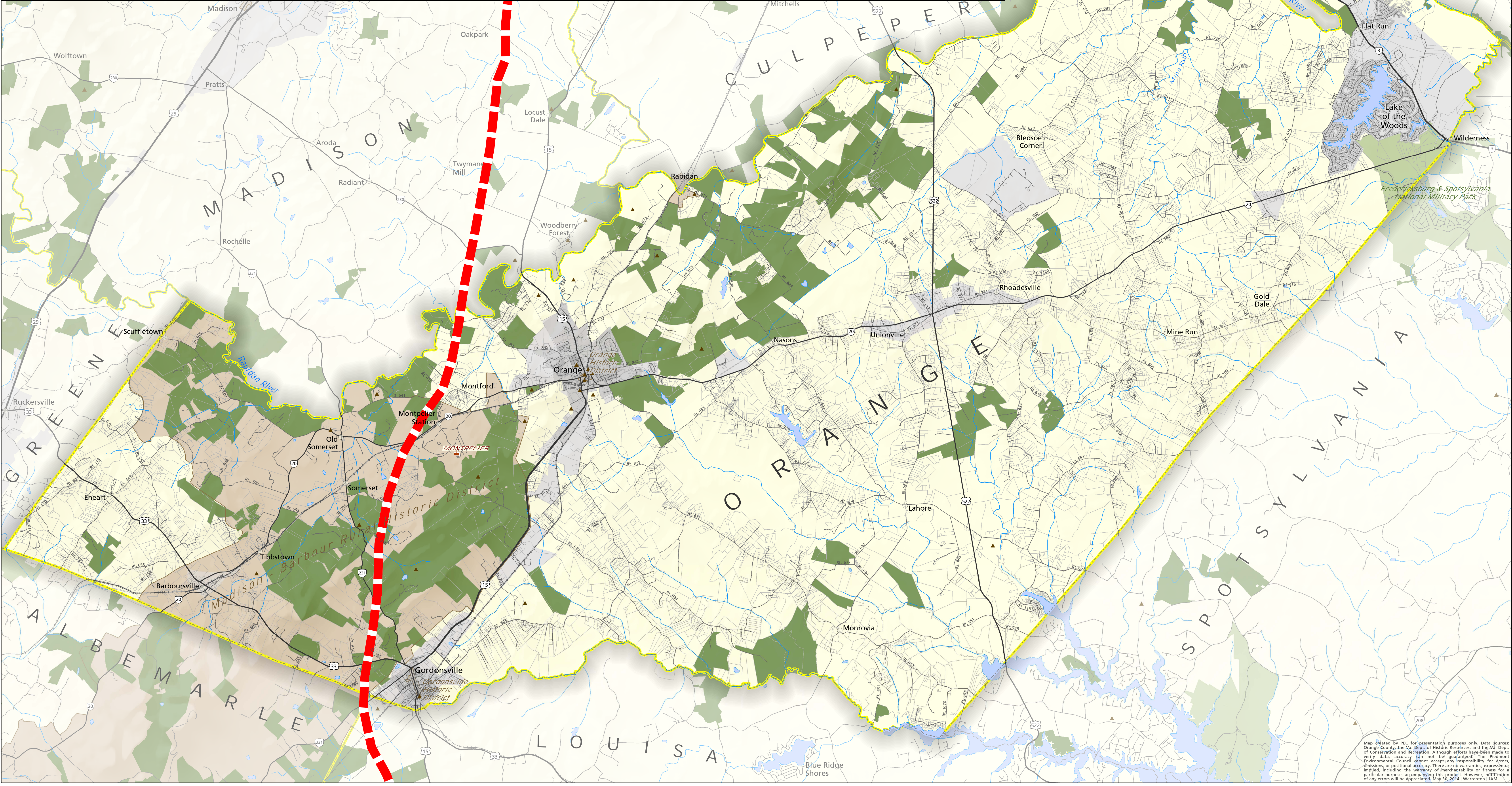
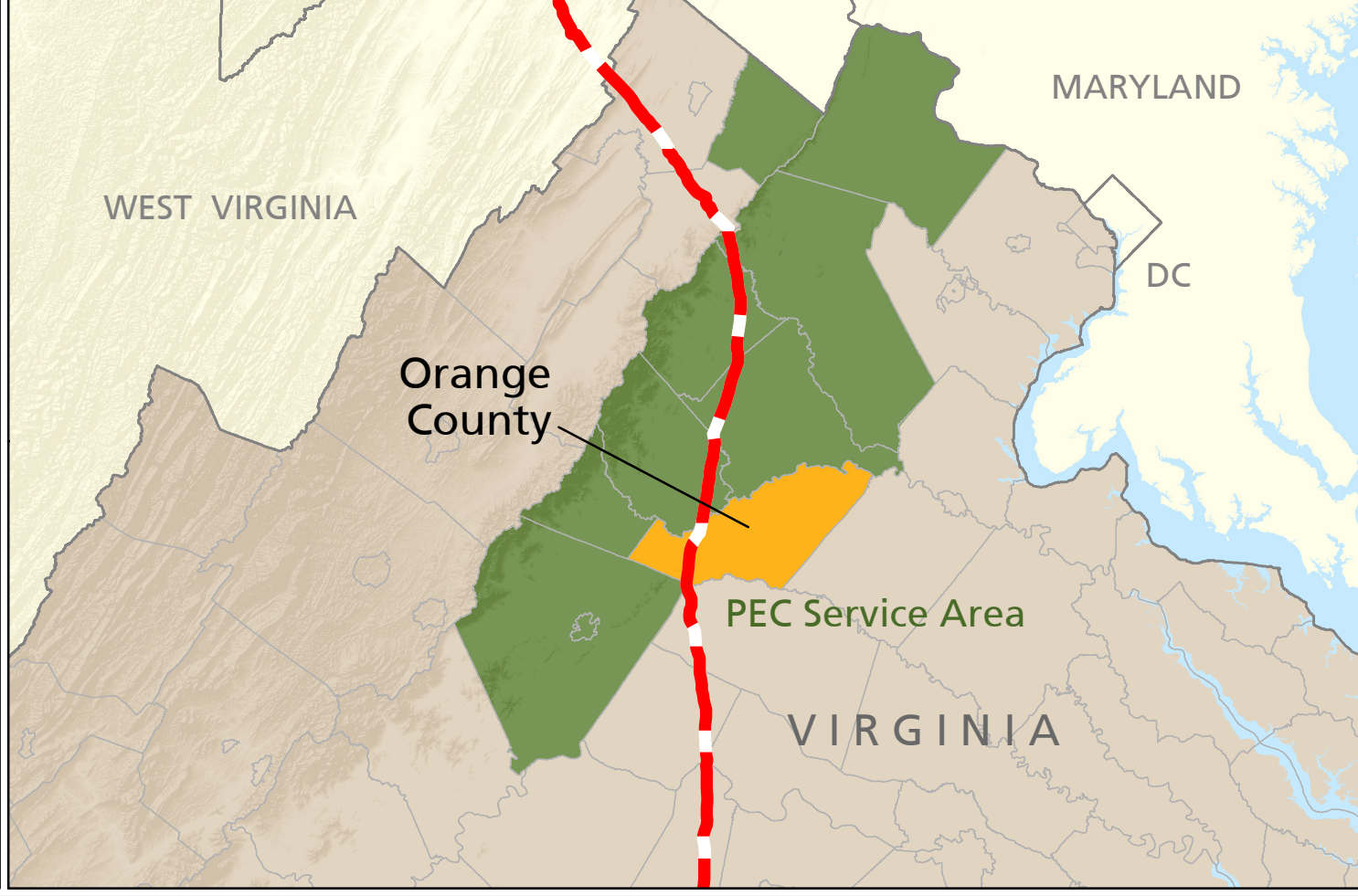
Gas Pipeline Initial Study Corridor Orange County



- Gas Pipeline Initial Study Corridor
- Conservation Easements
- Publicly Owned Lands
- Property Lines
- Registered Historic Sites
- National Historic Landmarks
- Historic Districts



The potential pipeline route shown on this map was derived from a map and letter from Spectra Energy to landowners and is an approximation of any potential or actual pipeline route. The route data is for illustrative purposes only and is not an official or exact route, nor should it be used for analysis.



Map created by PEC for presentation purposes only. Data sources: Orange County, the Va. Dept. of Historic Resources, and the Va. Dept. of Conservation and Recreation. Although efforts have been made to verify data, accuracy can not be guaranteed. The Piedmont Environmental Council cannot accept any responsibility for errors, omissions, or positional accuracy. There are no warranties, expressed or implied, including the warranty of merchantability or fitness for a particular purpose, accompanying this product. However, notification of any errors will be appreciated. May 30, 2014 | Warrenton | JAM