



Piedmont  
Environmental  
Council

ANNUAL REPORT · 2017



## Dear Friends,

“Do what you love.” It’s good advice for living a happy and rewarding life. It’s also a big part of the passion that drives PEC and our donors to protect and restore the Piedmont’s landscapes, historic communities and natural resources.



A HORSE AT THE MIDDLEBURG AGRICULTURAL RESEARCH AND EXTENSION (MARE) CENTER. *Photo by Paula Combs*

Piedmont residents and groups have done extraordinary things out of love for this place we call home. They’ve conserved more than 400,000 acres of land, an area more than twice the size of Shenandoah National Park. They’ve convinced highway engineers and elected leaders to change transportation plans to preserve historic roads and improve surrounding communities. In the face of intense speculative development pressures, local governments in the Piedmont have established and stuck with strong policies for managing growth. When a big project threatens, we are ready to stand up and fight.

“Piedmont residents and groups have done extraordinary things out of love for this place we call home”

In 2017, more than 60 individuals and families acted on their love of the land by placing their properties under conservation easement. Residents acted on their love of the historic Waterloo Bridge to show up in force at public hearings and speak out for its rehabilitation.

Landowners in the Blue Ridge Mountains have acted on a love for free-flowing streams and the fish who depend on them to migrate and spawn. In 2017, PEC completed our first two partnership projects with several of these landowners, reconnecting more than 7 miles of native trout streams. Our native trout are an indicator species for clean, cold water. Our goal is to restore high quality streams throughout the headwaters of the Upper Rappahannock.

When you love something, you’ll fight for it. We’re proud of how residents have come together to oppose new Outer

Beltway bridges and highways, and protect the Loudoun Transition Area from sprawling development. We are glad to support the communities and organizations battling the impacts of gas pipelines and electric transmission lines. We are determined to stand by the conservation easements that have been donated to us.

PEC exists to support, motivate and knit together this tapestry of individual and collective efforts—including landowners, private citizens, community groups and local governments. Increasingly, we're finding that residents and their families want to connect directly with the region's open spaces and to restore native habitats and wildlife. That's as true of residents of Charlottesville and Loudoun as in rural Rappahannock County. That's why we're working to facilitate new greenway trails and expanding events and volunteer activities at our signature conservation properties at Roundabout Meadows and the Piedmont Memorial Overlook.

Thank you for acting on your love of the Piedmont.

*Sincerely,*



**Chris Miller**  
President



**Jean Perin**  
Co-Chair, Board of Directors



**George L. Ohrstrom II**  
Co-Chair, Board of Directors

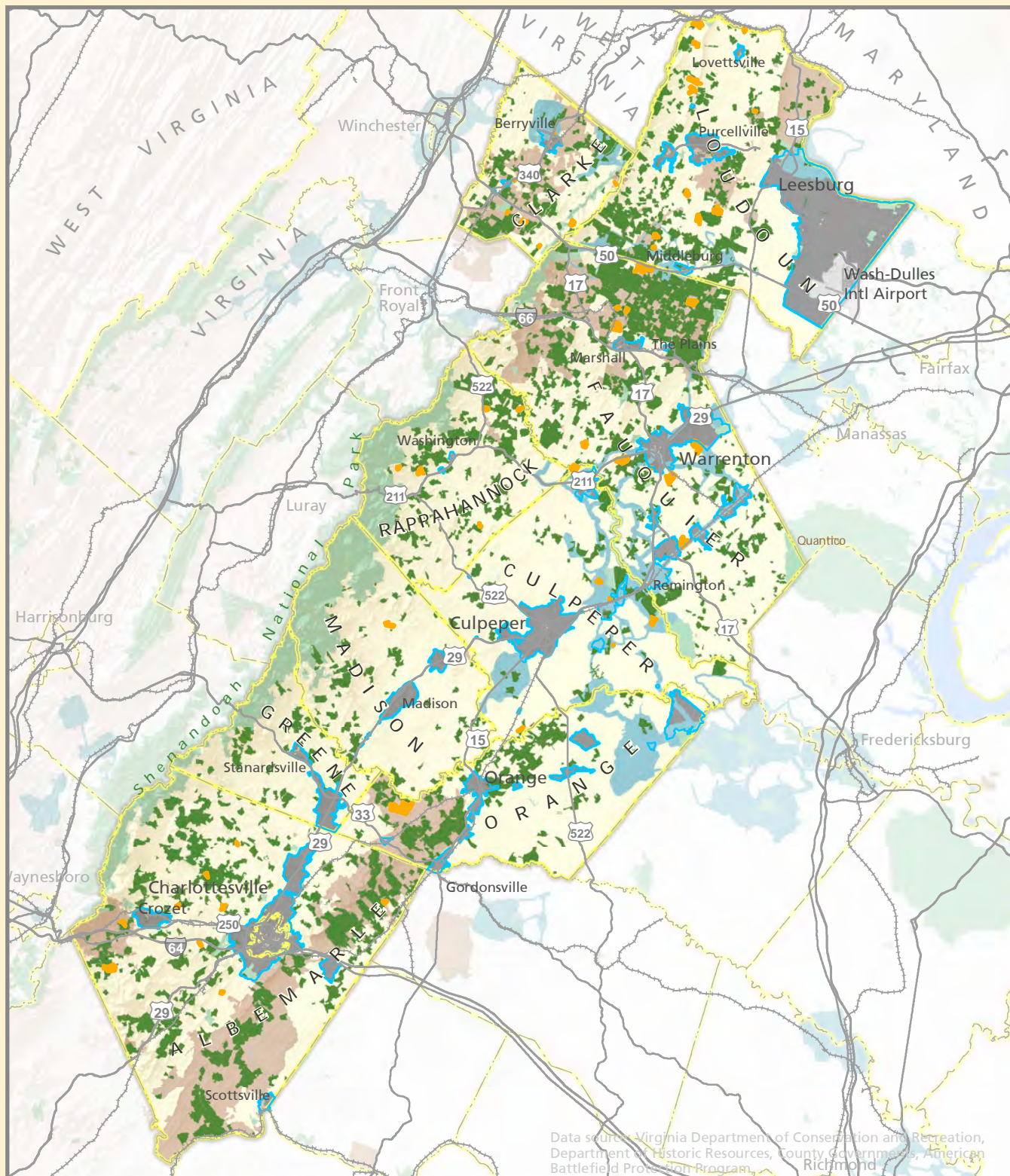


TAKING A WALK  
Photo by Jess Palmer

## contents

MAP OF THE PIEDMONT	2
<b>land conservation</b>	4
<b>habitat restoration</b>	6
<b>better communities</b>	8
<b>strong rural economies</b>	10
<b>restoring streams</b>	12
<b>standing up for Piedmont communities</b>	14
<b>history and beauty</b>	16
<b>clean water</b>	18
THE PIEDMONT FOUNDATION	20
CONTRIBUTIONS	21
LEGACY GIFTS	
In memory of Frederick Prince	23
In memory of Gina Farrar	29
BOARD OF DIRECTORS AND STAFF	31
STATEMENTS OF FINANCIAL CONDITION	Inside back cover





Data source: Virginia Department of Conservation and Recreation, Department of Historic Resources, County Governments, American Battlefield Protection Program, Richmond

# The Piedmont Region

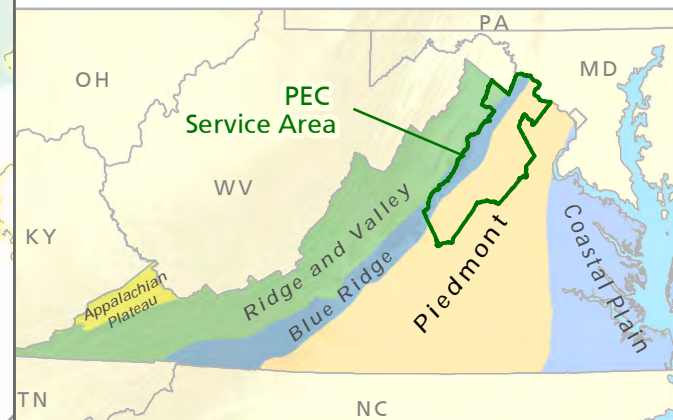
- Easements Recorded in 2017
- Conservation Easements
- Publicly Owned Lands
- Civil War Battlefields
- Historic Districts
- Areas Designated for Development

0 10 20 Miles





Virginia's northern Piedmont remains an exceptional place, despite development pressures. Residents have been strongly supportive of protecting its scenic beauty, agricultural economy, thriving communities, and unparalleled significance to America's history.

## Physiographic Regions of Virginia





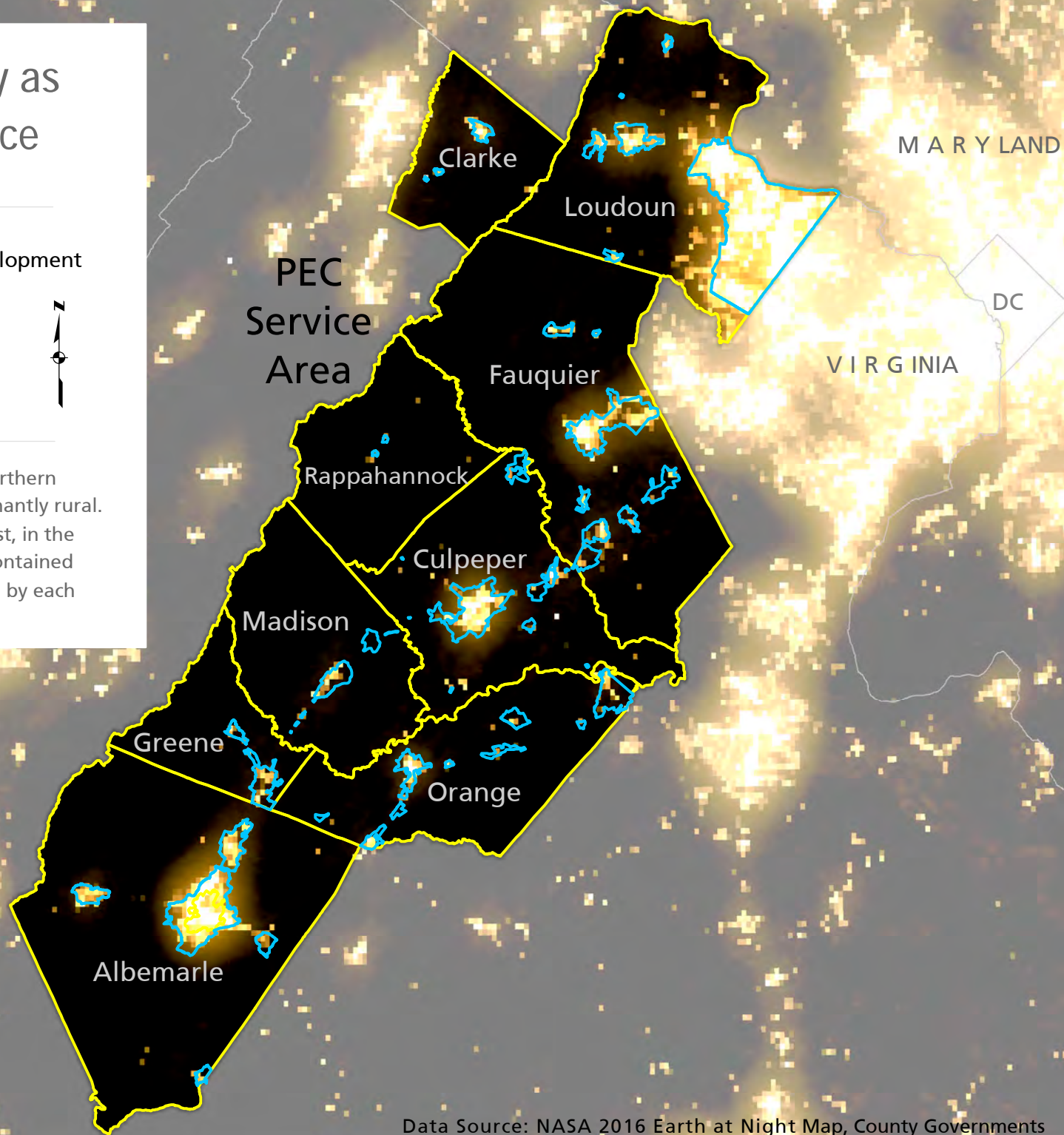
# Land Use Policy as Seen from Space

-  Areas Designated for Development
-  PEC Counties

0 10 20 Miles



Night sky images show Virginia's northern Piedmont continues to be predominantly rural. Contrasting with counties to the east, in the Piedmont, development is largely contained within the growth areas designated by each locality.



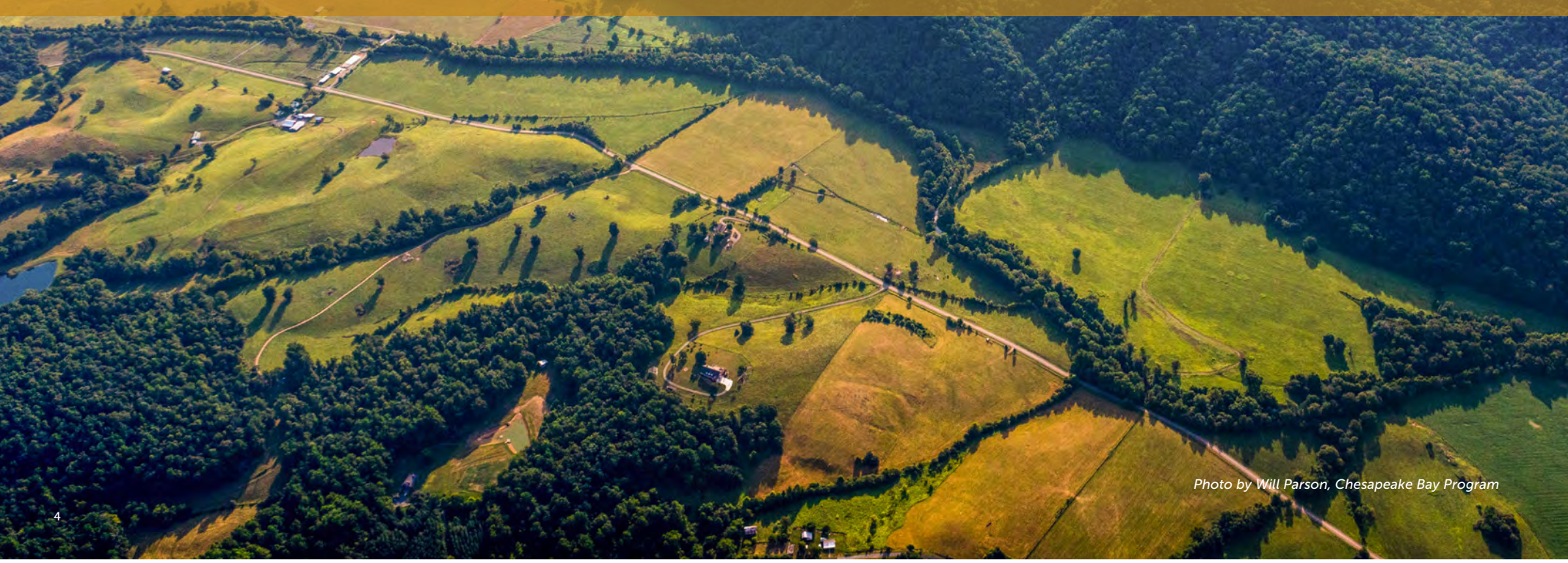
Data Source: NASA 2016 Earth at Night Map, County Governments





# land conservation

.....  
VOLUNTARY ACTION • OUTSTANDING SUCCESS • SAVING PLACES PEOPLE LOVE



*Photo by Will Parson, Chesapeake Bay Program*



# Preserving farmland and history in Orange County

“The land was here before I was here and it’s going to be here after I’m gone.

There’s really very little we can do in this life, and no matter how much money you have or what you do, if you can’t make some tiny little stamp and preserve something, what’s the point?” remarked Charlotte Tieken, Somerset resident and owner of Waverly Farm.

We worked with Ms. Tieken to put approximately 669 acres of her property in Orange County under

conservation easement at the close of 2017.

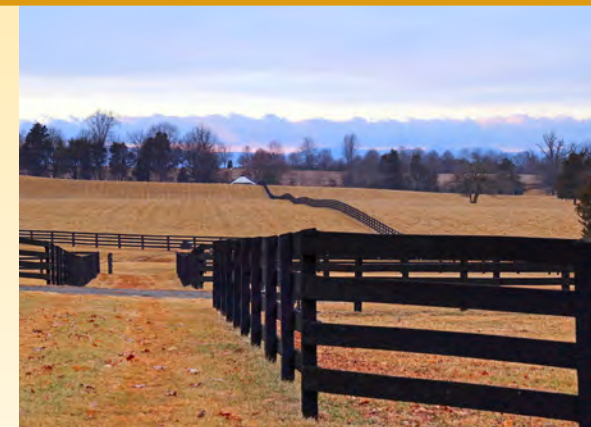
Down the road from James Madison’s Montpelier, the property is located within the Madison-Barbour Rural Historic District and has more than a mile of frontage on Constitution Highway. The district, known to have well-drained soils, rolling terrain and a mix of farms and forests, provides abundant open land.

“It was my husband’s wishes to conserve the farm, and after his passing

I didn’t want to wait any longer,” said Ms. Tieken. “The partnership with PEC was very easy, and how everything was facilitated made the process seamless.”

Ms. Tieken was one of more than 60 landowners in the Piedmont who permanently conserved their land in 2017, raising the total land protected by conservation easements in the PEC region to more than 400,000 acres.

“Too many people have said to me too many times, ‘We’re too far away, sprawl will never happen.’ Well, 30



THE SUN SETS OVER CHARLOTTE TIEKEN’S PROPERTY IN SOMERSET, VA., WHICH WAS PUT UNDER CONSERVATION EASEMENT WITH PEC AT THE CLOSE OF 2017.

Photo by Paula Combs

years ago, there was not a stop light between here and Charlottesville,” said Tieken. “If you believe in land and you believe in good stewardship, then it’s the right thing to do.”

## 2017 Highlights

► In 2017 PEC led efforts to protect full funding for the **\$75 million annually available through the Land Preservation Tax Credit**, the most effective tool Virginia has to protect farm and forest land, clean air and water, and historic and scenic landscapes. The approved state budget also funded land conservation grant programs at \$5.75 million, including funds for battlefield preservation and local farmland protection programs.

► PEC received the **2017 Conservation Partner** award from the John Marshall Soil and Water Conservation District in recognition of our collaborative land and water stewardship efforts in Fauquier County.

► PEC expanded restoration and public education activities at **our two signature conservation properties in the historic Route 50 corridor**. At the 141-acre Roundabout Meadows property at Gilbert’s Corner, PEC cleared land and planted cover crops to lay the groundwork for the Roundabout Meadows Community Farm, and held field walks showcasing the property’s history and our efforts to restore soil and stream health. At the Piedmont Memorial Overlook near Paris, PEC hosted several events to promote



conservation and restoration, including Public Lands Day on September 30 and a field walk that highlighted the habitat restoration and management practices on the property.

FARMLAND RESTORATION FIELD WALK AT ROUNDABOUT MEADOWS. Photo by Oya Simpson

## 6,237 Acres Protected in 2017

County	Acres protected in 2017 by Conservation Easements	Total Acres protected by Conservation Easements
Albemarle	775	99,574
Clarke	308	25,247
Culpeper	317	18,917
Fauquier	2,541	104,873
Greene	0	10,448
Loudoun	1,174	57,549
Madison	126	15,887
Orange	669	35,961
Rappahannock	327	32,744
<b>PEC Region</b>	<b>6,237</b>	<b>401,200</b>



# habitat restoration

WILDLIFE CORRIDORS • BIODIVERSITY • POLLINATORS • NATIVE PLANTS



THE VIRGINIA DEPARTMENT OF FORESTRY HELPED CONDUCT A PRESCRIBED BURN ON 5 ACRES OF PEC'S PIEDMONT MEMORIAL OVERLOOK AS PART OF AN ONGOING HABITAT RESTORATION PROJECT. *Photo by Marco Sanchez*



## Gaining ground and growing native

Interest in native plants has grown dramatically in the last ten years. PEC is working to channel this enthusiasm into changes on the ground. In 2017, we completed three new demonstration gardens to engage and connect more residents with native habitat restoration.



In Orlean in western Fauquier, PEC collaborated with the Orlean Community Trail System and Hill House Nursery to plant a pollinator garden at the Orlean Fire Hall. Made possible through a grant from The Volgenau Foundation for habitat restoration in the Thumb Run watershed, the half-acre demonstration garden includes a variety of native perennial shrubs, plants and grasses.

In October, PEC worked with RappFLOW and Hill House Nursery to install a pollinator garden, with 14 species of native plants, near the walking trail along the Thornton River in Sperryville. This project is a collaboration between PEC and the Endangered Species Coalition to raise awareness about the plight of the rusty-patched bumble bee, a federally endangered species.

VOLUNTEERS INSTALL NATIVE PLANTS AT THORNTON RIVER PARK IN SPERRYVILLE. Photo by Celia Vuocolo



NATIVE PLANTING IN DOWNTOWN WARRENTON.  
Photo by Paula Combs

Sperryville's sister garden was planted in November at the site of the new Warrenton Dog Park along the Warrenton Branch Greenway. Nineteen native plant species were provided by Piedmont Nursery.

### 2017 Highlights

- ▶ **PEC's office grounds in downtown Warrenton** have gone native! We planted more than 60 species of native trees, shrubs and plants in our front, back and side yards. PEC's front yard features a range of showy native plants and ground cover, while in back, native shrubs and trees weave around a new trail. The native habitat improvements will furnish a living laboratory for events at our office grounds, and encourage visitors to explore similar improvements at their properties.
- ▶ PEC worked with the Virginia Department of Forestry to conduct a prescribed burn on 5 acres of our **native warm season grass meadow at the Piedmont Memorial Overlook**, in order to give space for new growth. Just two months after the burn, the ground was once again covered with native vegetation. PEC plans to burn the remaining six acres in 2018.



- ▶ In Loudoun County, PEC organized **two native habitat garden and landscape tours** for Home Owner Association boards and property managers. The Broadlands and Sycamore Hill communities hosted the tours and answered questions about their experiences, challenges and lessons learned.
- ▶ In partnership with Virginia Working Landscapes and biologists from the Virginia Quail Initiative, **PEC helped organize two sold-out showings of *Bobwhites on the Brink***, a documentary about shrinking quail habitat and ways that landowners can reverse the trend.

TAKING A TOUR OF A NATIVE PLANT GARDEN IN LOUDOUN COUNTY. Photo by Oya Simpson





# better communities

CITIZEN INVOLVEMENT · GREAT PLACES TO LIVE · MANAGING TRAFFIC AND TAXES

FAMILIES ENJOY THE RIVANNA TRAIL IN CHARLOTTESVILLE.  
*Photo by Marco Sanchez*



## Connecting Charlottesville and Albemarle communities

The Charlottesville area has many world-class natural and cultural resources, and long-standing plans to tie them together with biking and walking connections. PEC is working with Charlottesville and Albemarle communities to build support for the construction of a regional network of bicycle and pedestrian greenways.

Thanks to a grant from the Charlottesville Area Community Foundation, PEC collaborated with the Thomas Jefferson Planning District Commission (TJPDC) to launch the Charlottesville-Albemarle greenway initiative. Together, we are engaging a wide range of residents and community leaders to envision and implement a comprehensive biking and walking transportation network in the

Charlottesville-Albemarle urban core.

The initiative kicked off in November with an event at the Jefferson School African American Heritage Center. More than 150 attendees got insights about regional greenway efforts from trail leaders Chuck Flink and Max Hepp-Buchanan, and had the opportunity to share their own vision for how to enhance connectivity in the region.

Soon after, PEC teamed up with the Imagination Foundation of CACF and Cypherways to engage more than 70 people in an evening of facilitated discussion — with a beat. Spoken-word artists rapped a freestyle improv to get the creative juices flowing and generate new ideas. “The warm-up got me thinking of issues in an entirely new way,” said one attendee.



MORE THAN 150 PEOPLE PARTICIPATED IN THE CHARLOTTESVILLE-ALBEMARLE GREENWAYS KICK-OFF EVENT. Photo by Marco Sanchez

PEC and TJPDC are organizing a range of other community gatherings and small-group discussions, and meeting people where they are. This community feedback and input will directly inform the updated Jefferson Area Bike and Pedestrian Plan that the TJPDC expects to have completed by the autumn of 2018. When the regional transportation board adopts the plan, the community will be poised to turn the lines on a map to realities on the ground.

### 2017 Highlights

- ▶ PEC serves as the fiscal sponsor for the **Coalition for Smarter Growth**, one of the nation's preeminent smart growth organizations. In 2017, CSG won the Council of Governments' Regional Partnership Award, led a regional effort to increase funding for Metro, and campaigned for plans and projects to increase housing in mixed-use, transit-accessible locations.
- ▶ Twelve college students and recent graduates participated in our **7-week Summer Fellowship**, an immersion course in the conservation and environmental issues that inform PEC's work. Students participated in seminars led by PEC staff and completed joint practicum projects that built their knowledge and professional skills.
- ▶ PEC organized a coalition of Loudoun civic and nonprofit groups to advocate for **preservation of the Transition Policy Area** in the County's update of its comprehensive plan. The Transition Area Alliance has become a strong voice for keeping the current plan's vision for managing growth, preserving open space, and protecting water in this critical part of Loudoun.
- ▶ PEC partnered with the **Town of Gordonsville to begin revitalizing Verling Park** in the downtown area. These efforts took a big step forward with the Town's acquisition of a contiguous residential parcel, which will expand the park to an entire block and improve access for nearby residents.
- ▶ PEC and the Toole Design Group worked with the Town of Remington to create a plan to **expand bicycling and walking connections in the downtown area** and to the Rappahannock River.
- ▶ PEC launched our third **Solarize Piedmont** campaign in spring 2017 to stimulate more residential installation of solar through bulk purchasing. The three campaigns have resulted in more than \$1.2 million in new solar investments and 395 kW of new solar capacity.



STREET LIFE IN DOWNTOWN LEESBURG  
Photo by Marco Sanchez





# strong rural economies

.....  
THRIVING FARMS • LOCAL FOOD • INNOVATION • HEALTHY, WORKING LAND

HARVESTING GARLIC AT TREE AND LEAF FARM  
IN PURCELLVILLE. Photo by Marco Sanchez



## Finding a place to grow

Access to affordable farmland and pasture is one of the primary barriers for next-generation farmers in the Piedmont. PEC is building relationships between landowners and land-seeking farmers in the Piedmont in order to encourage farmland leasing partnerships.

In 2017, PEC held four farmland leasing events to connect farmers with landowners interested in farmland leasing. Representatives from the Virginia Farm Link program,

Virginia Cooperative Extension and the USDA Natural Resources Conservation Service were on hand to answer questions and share resources on land linking opportunities and cost-share programs. More than 60 landowners and land seekers participated in the workshops and networking events.

At our Roundabout Meadows property at Gilbert's Corner, we are using our farm lease with local livestock operators to document our shared stewardship goals over the next five years, which focus on improving soil

health through sustainable grazing practices. The cattle farmers have already started work implementing the grazing plan in the lease, and have adjusted herd volumes to minimize overgrazing. PEC is actively monitoring the new grazing plan and is tracking changes in soil health over time. These new practices complement the stream exclusion fencing and alternative watering systems PEC installed in 2016, which will increase farm productivity and improve stewardship of land and water resources.



LANDOWNERS AND FARMLAND SEEKERS CHAT AT A NETWORKING EVENT PEC HOSTED AT WARTHOG BREWERY IN WARRENTON, VA.  
Photo by Marco Sanchez

### 2017 Highlights

- PEC completed a feasibility study for the **Roundabout Meadows Community Farm** at Gilbert's Corner, based on extensive research, interviews and discussion. The study covers future development of a 20-acre section of Roundabout Meadows as a community farm where volunteers will plant, harvest and pack fruits and vegetables for donation to food-insecure residents.



FARMER-CHEF NETWORKING EVENT IN CULPEPER, VA.  
Photo by Marco Sanchez


- At PEC's livestock farm at Roundabout Meadows, PEC is testing the soils across a variety of parameters to **measure the impact of improved pasture management regimes**, following the lessons learned from the protocols learned from the partnership with Mike Sands at Bean Hollow Grassfed at Over Jordan Farm in Rappahannock County.
- PEC hosted a **Farmer-Chef Social Happy Hour** in Culpeper on November 6th, to connect Piedmont farmers to food retailers and expand markets for local food.



# Restoring Streams and Connecting Habitat

Headwater streams of the Rappahannock River are home to much of Virginia's remaining native eastern brook trout. Well-designed road-stream crossings that allow aquatic organisms to move up and downstream are essential to a healthy brook trout population and good water quality. They also prevent flooding and property damage after severe weather—meaning lower costs to landowners and the state.

PEC is working to reconnect brook trout habitat by removing or replacing road-stream crossings that restrict aquatic organism passage on Rappahannock headwater streams with more fish-friendly versions. We reached a milestone in 2017 with the completion of our first two trout stream restoration projects.

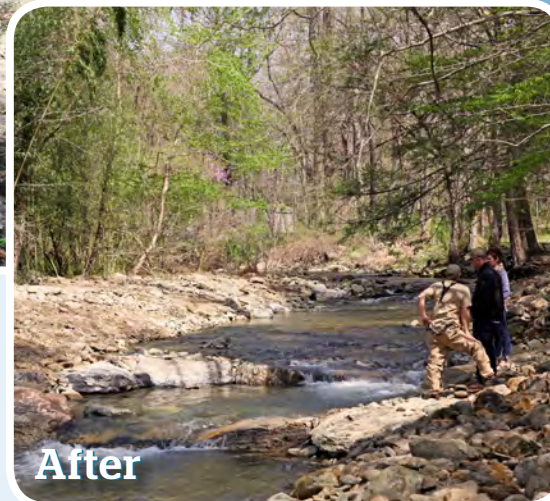
THE REMOVAL OF DRIVEWAY CULVERTS AT SPRUCEPINE BRANCH.   
Photo by Claire Catlett



**Before**

▲ THE CULVERT, SURROUNDED BY AN ERODING CONCRETE BRIDGE, BEFORE IT WAS REMOVED ON THE ROBINSON RIVER IN MADISON COUNTY.

▶ AFTER THE CULVERT WAS REMOVED ON THE ROBINSON RIVER, WHICH HELPED RECONNECT 5.3 MILES OF HABITAT FOR AQUATIC SPECIES SUCH AS AMERICAN EEL AND BROOK TROUT.



**After**

## Robinson River

At Robinson River, PEC worked with U.S. Fish and Wildlife Service (USFWS), Shenandoah Streamworks, Trout Unlimited, and local landowners to remove a culvert and replace it with a low-water ford. We also restored 350 linear feet of stream to its natural channel, stabilizing banks from erosion, and ultimately removing sediment from going downstream to the Chesapeake Bay. In all, 5.3 miles of habitat were restored for aquatic species such as American eel and brook trout simply by removing this single barrier along the river.





# Sprucepine Branch

PEC partnered with USFWS, Shenandoah Streamworks and local landowners to replace a set of culverts with a bridge over Sprucepine Branch. The project reconnected 2 miles of stream for trout passage.

PEC monitors the benefits of these projects for riparian vegetation, water quality, and fish population health with USFWS, VA Department of Game and Inland Fisheries, Friends of the Rappahannock and other partners.



Before

THE CULVERTS ON SPRUCEPINE BRANCH IN RAPPAHANNOCK COUNTY BEFORE THEY WERE REMOVED.

THE BRIDGE THAT REPLACED CULVERTS ON SPRUCEPINE BRANCH IN RAPPAHANNOCK COUNTY.



After



PEC CELEBRATES THE COMPLETION OF SPRUCEPINE BRANCH'S TROUT STREAM RESTORATION WITH LOCAL LANDOWNERS, FALL 2017.  
Photo by Paula Combs

Coming soon...

New trout stream restoration projects at **Bolton Branch** in Rappahannock and **White Oak Canyon** in Madison.



# Standing up for Piedmont communities

When unnecessary or ill-conceived infrastructure proposals threaten the Piedmont, PEC stands up for our communities, landscapes, natural resources and history. 2017 saw a renewed offensive to build another

Potomac river bridge crossing in Loudoun (a component of an Outer Beltway), and unprecedented attacks on conservation easements from the proposed Atlantic Coast Pipeline. Because of your support, PEC was able to fight back.

## Potomac River Crossing

A new bridge over the Potomac west of the American Legion Bridge has long been the dream of real-estate developers and highway builders. The project would pave the way for an Outer Beltway. It would open up the Piedmont and rural Montgomery County, Maryland to miles of asphalt and suburban development, reaping profits for a few—and more sprawl, traffic and pollution for everyone else.

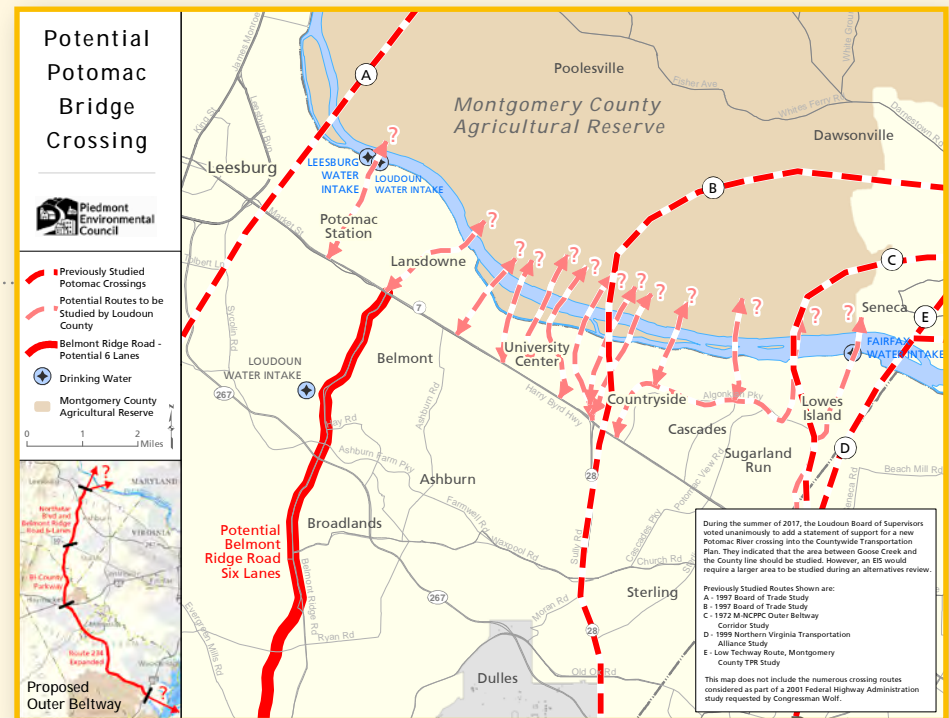
The sprawl lobby mounted a no-holds-barred push for a new Potomac crossing in 2017. Despite

a recent VDOT study showing minimal traffic demand to justify such an expensive project, the Loudoun Board of Supervisors voted to initiate yet another study of a new crossing. Meanwhile, regional transportation boards considered adding a new Potomac crossing to their long-range plans.

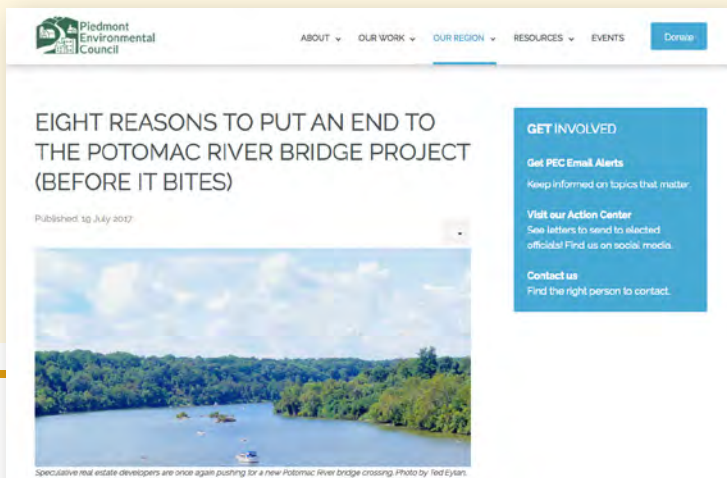
PEC and the Coalition for Smarter Growth alerted our members to contact their elected leaders and testify at public hearings. Residents spoke out overwhelmingly in opposition to a new bridge and in support of investments in

improving the American Legion Bridge and transit services. The Montgomery County Council unanimously approved a resolution opposing a study of a new western crossing.

While offensives to build the Outer Beltway will continue, PEC and our allies will be there to meet them at every turn.



THIS MAP SHOWS THE MANY PROPOSED LOCATIONS FOR WHERE THE POTENTIAL POTOMAC RIVER CROSSING COULD BE BUILT.





GAS PIPELINE CUTS THROUGH FOREST.  
Flickr photo by NPCA Online

# Atlantic Coast Pipeline

At nearly 600 miles, Dominion Resources' proposed Atlantic Coast Pipeline would be the largest pipeline of its kind to cross Virginia, and the first pipeline of this scale to be constructed across steep, forested mountain landscape with sensitive, high-quality streams and rivers. Dominion's proposal would also have a major impact on conservation easements and set a disturbing precedent.



The pipeline's proposed path cuts through more than 4,500 acres of private conservation lands in Virginia. A Dominion proposal approved by the Virginia Outdoors Foundation (VOF) diverts 10 VOF easements from open space use. In exchange for other conservation lands, the proposal would permanently impair conservation values of the easements. Such a request is unprecedented in scale and inconsistent with local comprehensive plans.

PEC joined forces with



the Shenandoah Valley Network, Southern Environmental Law Center and other allies. We opposed Dominion's easement diversion request in written communications with VOF and in public testimony. Our educational campaign elicited hundreds of comments to VOF in opposition to the proposal. PEC also joined in comments to the Federal Energy Regulatory Commission

on the potential impacts to our natural resources and to the Virginia Department of Environmental Quality regarding the water quality permits. We created numerous maps to aid allies in demonstrating the pipeline's impact on our natural and historic resources.

PEC is proud to stand with our partners in the fight against this unnecessary, profit-driven pipeline.





# history and beauty

.....  
SENSE OF PLACE • SCENIC VIEWS • BATTLEFIELDS • HISTORIC DISTRICTS

CHRISTMAS SNOW AT BEN VENUE BY JOYCE HARMAN. WINNER OF THE BEAUTIFUL  
LANDSCAPES & STREETSCAPES CATEGORY IN OUR 2017 PHOTO CONTEST.



## Saving an **iconic bridge**

When Waterloo Bridge was closed in 2014 due to structural deficiencies, residents rallied to demand that the historic structure be rehabilitated. Built in 1878, the bridge over the Rappahannock River between Fauquier and Culpeper is one of the few remaining metal Pratt through-truss bridges in Virginia, and an iconic structure and place for many residents.

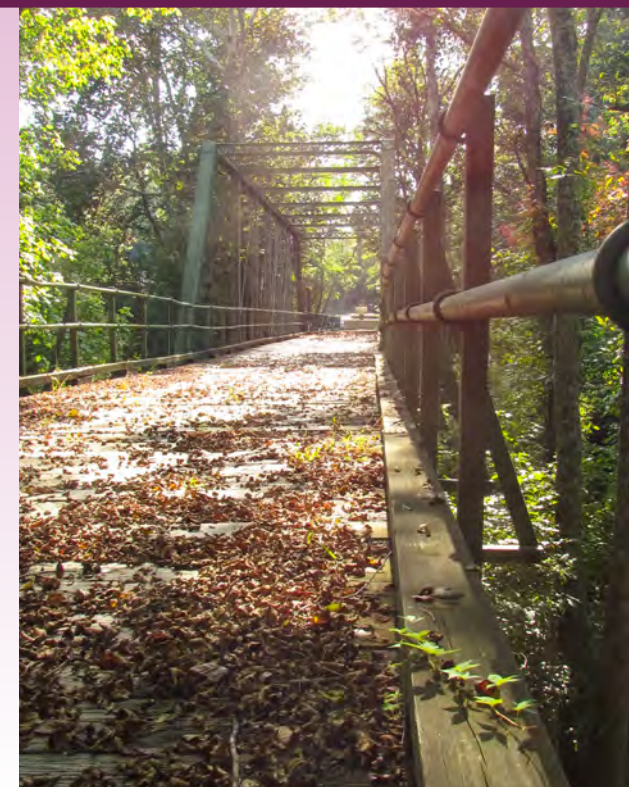
For the past four years, PEC has worked with local residents and groups to save Waterloo Bridge from demolition. In 2017, our efforts paid off when the Virginia Department of Transportation and local governments indicated they would move forward with rehabilitation.

Thanks to the Hitt family's generous pledge of \$1 million toward the project in early 2017, VDOT indicated that it would be possible to rehabilitate the bridge without a contribution of funds from either Fauquier or Culpeper County.

After a public hearing in November, Fauquier County passed a resolution of support for the project. Many residents spoke, including Russell Hitt, who gave a touching account of his memories going over the bridge as a child.

While success is in sight with Waterloo Bridge, too many historic bridges in Virginia are suffering demolition by neglect. PEC is urging the state to take a comprehensive approach to better identify and ensure maintenance of its historic bridges. In March, PEC submitted detailed comments to VDOT in response to its reevaluation of the state historic bridge inventory. PEC is continuing to communicate with VDOT and the Commonwealth Transportation Board and offer ideas for stronger policies to identify, maintain and preserve the state's historic bridges.

We'll continue to work to preserve Waterloo Bridge—and historic bridges across Virginia.



WATERLOO BRIDGE. Photo by Julie Bolthouse

## 2017 Highlights



PEC'S KRISTIE KENDALL REVIEWS A MAP OF THE PROPOSED SHENANDOAH NATIONAL PARK BOUNDARIES FROM 1928. Photo by Marco Sanchez

- ▶ PEC developed and submitted an application to the Virginia Department of Historic Resources to establish a **new rural historic district** in the Rapidan and Clark Mountain area. In September, the new district was deemed eligible for listing on the National Register of Historic Places. Listing would provide new opportunities to restore and protect these historic lands and communities along the Rapidan River between the Town of Orange and Morton's Ford in Culpeper.
- ▶ PEC held our sixth annual **Mountain Heritage celebration**, at the Cecil Mission in Greene County. More than 100 people attended the event. Members of local families shared family photos and discussed their memories of life in the mountains of Greene County.
- ▶ More than **820 acres of Civil War battlefields** were protected in 2017, for a total of approximately 29,447 acres.
- ▶ PEC is working with our consultants, Rivanna Archaeological Services, to research and map the Civil War battles of Jack's Shop and James City in Madison County, through a grant from the American Battlefield Protection Program.
- ▶ PEC has worked closely with Fauquier County to move the **Rappahannock Station Battlefield Park** in Remington forward. The county approved funding to develop the park. PEC designed and installed landscaping at the gateway to the new park through a PATH Foundation grant.
- ▶ More than **1,100 acres along Scenic Byways** were protected last year for a total of approximately 107,303 acres.





# clean water

SAFE DRINKING SOURCES • GOOD HEALTH • PLACES TO SWIM AND FISH

POTOMAC RIVER NEAR ALGONKIAN REGIONAL PARK IN LOUDOUN COUNTY.



## Restoring riparian buffers along Rappahannock headwater streams

**H**ave you seen the ribbon of green growing along a stream, edging fields and mountains with vibrant life?

What you are looking at is a riparian buffer, an essential part of our ecosystem in Virginia's Piedmont. These streamside forests protect streambanks from erosion, and improve water quality by preventing pollution from entering waterways. Native trees and shrubs along a creek are important for fish and wildlife habitat, too.

In 2017, PEC and Friends of the Rappahannock collaborated to accelerate the restoration of riparian buffers along Upper Rappahannock streams with the Headwater Stream Initiative (HSI). Together, with the help of 180 volunteers

from local schools and community groups from Rappahannock, Orange, Madison counties, the HSI program helped local landowners plant more than 1,000 native trees and shrubs along streams. That adds up to more than 6 acres of new riparian buffers, with another 22 acres of riparian restoration planned for HSI in 2018.

The initiative is part of a larger effort to protect and restore water quality for the Rappahannock River and the Chesapeake Bay watershed. When landowners maintain healthy forest buffers along creeks—as well as implement other best management practices such as stream fencing—pollutants from runoff such as sediment, nitrogen, and phosphorus can be removed from waterways and keep our water clean.



VOLUNTEERS AT A 2017 HEADWATER STREAM PLANTING.  
Photo by Marco Sanchez

### 2017 Highlights

- ▶ More than **24 miles of streams** were protected by conservation easements in 2017, bringing the total number of stream-miles protected by easements to 1,657. In addition, **236 acres of wetlands** were protected, bringing the total to 9,839 acres. All of these protected resources contribute to the restoration of the Chesapeake Bay, since water flowing through the Piedmont eventually enters the Bay.
- ▶ As Fauquier County faces challenges in identifying sources of water supply to meet the community's existing and future needs, **PEC conducted a build-out study** of the county's water and sewer needs relative to planned and zoned future growth. Our analysis found that none of the service districts have enough water and sewer for build-out of the existing zoning on the ground, let alone what is envisioned in the service district plans. In response the County and Water & Sanitation Authority are moving more toward long-term planning of our water and sewer infrastructure.



- ▶ With support from the Virginia Environmental Endowment, PEC began work to **identify conservation easements in the Goose Creek watershed** that could be amended to improve protection of water quality. This is a multi-year effort that builds on work by the Virginia Outdoors Foundation.
- ▶ PEC continues to work with communities throughout Loudoun to implement **best management techniques to improve water quality**

PEC'S FAUQUIER COUNTY FIELD REPRESENTATIVE, JULIE BOLTHOUSE, GIVES A PRESENTATION ON GROUNDWATER.  
Photo by Paula Combs



Photo by Marco Sanchez



# The Piedmont Foundation

**E**stablished to hold and manage special funds in support of PEC, the Piedmont Foundation assures PEC's capacity to respond to key opportunities and challenges as they arise and to fulfill our core mission over the long term. A separate 501(c)(3) charitable organization governed by an eight-member Board, the Foundation accepts gifts of cash, securities, property and appreciated assets. The Foundation also offers opportunities for tax advantaged planned gifts including trusts, bequests and life income plans.

Currently, the Piedmont Foundation manages funds in the following categories:

- ▶ **Conservation Stewardship Fund**
- ▶ **Easement Defense Fund**
- ▶ **Ever Green Fund**
- ▶ **General Endowment Fund**
- ▶ **Ovoka Memorial Fund**
- ▶ **Land Conservation Fund**

Within this fund, the following Regional Land Conservation Funds have been established:

<i>Albemarle County Land Conservation Fund</i>	<i>Krebsner Fund for Rappahannock County Conservation</i>
<i>Bull Run Mountains Conservation Fund</i>	<i>Madison County Land Conservation Fund</i>
<i>Clarke County Land Conservation Fund</i>	<i>Orange County Conservation Fund</i>
<i>Culpeper County Land Conservation Fund</i>	<i>James M. Rowley Goose Creek Conservation Fund</i>
<i>Greene County Land Conservation Fund</i>	<i>Julian Scheer Fauquier Land Conservation Fund</i>

## Piedmont Foundation Board of Directors

**Mark Ohrstrom,**  
President

**John H. Birdsall, III,**  
Vice President

**Charles Akre,**  
Secretary-Treasurer

**Tim Dunn**

**George Ohrstrom, II\***

**Jean Perin\***

**Trevor Potter**

**Diana Prince**

\* Ex-Officio

## Contributors to the Piedmont Foundation

Mr. David A. Slosman  
and Mrs. Gwen Alred

Mr. and Mrs. Harry  
K. Benham, III

Brennan Family Foundation

Mr. and Ms. Harry Byrd IV

The Honorable  
Robert Calhoun

Mr. and Mrs. Robert Cary

Dr. Richard Catlett

T. Allan Comp and  
Selma Thomas

Mr. Peter J. Cook

Jane Covington Restoration

Dun Foundation

Joanne and Morgan Duncan

Mr. Richard Farland

Mr. and Mrs. Andrew Ferrari

Mr. and Mrs. William A. Ferster

Mr. A. Wray Fitch

Cleo Smart Gewirz

Mr. Thomas Gilpin

Mr. and Mrs. Dennis Gingold

The Honorable  
Douglas Ginsburg

George Grayson

Mr. and Mrs. Theodore  
Guarriello

Ms. Diane M. Gulick

Drs. Jeffrey and Lucille Harris

Mr. and Mrs. Joseph  
W. Henderson

Mr. and Mrs. Robert P. Irwin

Ms. Catherine C. Larmore

Mr. and Mrs. John Lewis

Loudoun Benefit Horse  
Show Foundation

Lynx Investment Advisory LLC

Dr. and Mrs. M.P. Mackay-Smith

Alexandra G. McIntosh

Dr. Russell B. McKelway  
and Dr. Laura Dabinett

Howard and Candy Means

Mr. and Mrs. Christopher  
G. Miller

Mr. Dulany Morison and  
Mrs. Eleanor Morison

Mr. and Mrs. George  
L. Ohrstrom, II

Mr. and Mrs. Timothy Overcash

Jean Perin

Mr. Grey Scheer

Mrs. Suzanne Scheer

Mr. and Mrs. J. Donald  
Shockey, Jr.

Kathy and Nick Smart

Mrs. Selena Smart and  
Mr. David Morris

Mr. and Mrs. Sidney Stern

Ms. Beverly Stickles

Stonehall Farm

Ms. Charlotte Ticken

Virginia Department of  
Conservation and Recreation

Ms. Laurie Volk

Mr. Michael D. Ware and  
Ms. Mary C. Ware

Mr. and Mrs. Michael Williams

Mr. and Mrs. G. Cabell Williams

Wrinkle In Time Foundation

Mr. and Mrs. Arthur  
A. Zimmerman



# Contributions

**With much gratitude,** PEC presents the names of individuals, families, foundations, businesses and organizations that supported the Piedmont Environmental Council during 2017. Although we do not have the space to honor everyone, we are extremely grateful for the generosity of each of our members. We offer sincere thanks for your ongoing commitment to promoting and protecting the Piedmont region.

## Protector of the Piedmont

\$100,000 +

Anonymous  
 Agua Fund, Inc.  
 William M. Backer Foundation  
 Charlottesville Area Community Foundation  
 The August Heid Trust, Bank of America, N.A., Trustee  
 Jacqueline B. Mars  
 Ms. Jean Perin  
 Prince Charitable Trusts  
 Mr. Bill Rigg

## Guardian of the Piedmont

\$50,000 - \$99,999

Chesapeake Bay Trust  
 National Fish and Wildlife Foundation  
 Mr. and Mrs. George L. Ohrstrom, II  
 George L. Ohrstrom, Jr. Foundation

The Ohrstrom Foundation, Inc.

U.S. Environmental Protection Agency

Wise Foundation

Wrinkle In Time Foundation

## Defender of the Piedmont

\$25,000 - \$49,999

Anonymous  
 Ann Mudge Backer  
 Nimick Forbesway Foundation  
 Mr. and Mrs. Mark J. Ohrstrom  
 Mr. and Mrs. John H. Snyder  
 The Lazar Foundation  
 U.S. Fish and Wildlife Service  
 The Volgenau Foundation  
 Mrs. J.W. Abel Smith  
 Mr. and Mrs. Chuck Akre, Jr.

## Champion of the Piedmont

\$10,000 - \$24,999

Mr. and Mrs. Zohar Ben-Dov  
 Mr. and Mrs. John H. Birdsall, III  
 Black Dog Foundation  
 Mr. and Mrs. Edward Bonnie  
 The Campbell Foundation  
 Ms. Barbara H. Chacour  
 Mr. and Mrs. Leslie Cheek, III  
 Mr. and Mrs. J. Sheldon Clark  
 Mr. and Mrs. P. Hamilton Clark  
 Mr. and Mrs. Brian Conboy  
 County of Loudoun Virginia  
 Culpeper Wellness Foundation  
 Mr. and Mrs. George de Garmo  
 Department of Game & Inland Fisheries  
 Ms. Anne Edwards  
 The Ford Family Foundation  
 The Helen Clay Frick Foundation  
 Cleo and Michael Gewirz

Mr. Loren W. Hershey

Mary Buford and Frederick P. Hitz

The Hopewell Fund

James L. Kleeblatt Memorial Foundation

Mr. and Mrs. Christopher G. Miller

Jeanne and Michael Morency

PATH Foundation

Mr. and Mrs. Michael Prentiss

Rappahannock-Rapidan Regional Commission

The Honorable Marie W. Ridder

Mr. and Mrs. J. D. Shockey, Jr.

Mr. Peter Stoudt and Mrs. Alice Handy

Ms. Charlotte Tieken

Dr. and Mrs. Jerold J. Principato

Valley Charitable Trust

PEC PRESIDENT CHRIS MILLER PRESENTS THE CONSERVATION AWARD TO MARY SCOTT AND JOHN BIRDSALL AT THE 2017 SUMMER SAFARI, WHO ARE JOINED BY PEC BOARD CO-CHAIR GEORGE OHRSTROM, EXECUTIVE DIRECTOR OF SHENANDOAH NATIONAL PARK TRUST SUSAN SHERMAN, AND STEVE MONFORT, JOHN AND ADRIENNE MARS DIRECTOR OF SMITHSONIAN CONSERVATION BIOLOGY INSTITUTE. *Photo by Ronda Ann Gregorio*







PEC AND THE VOLGENAU FOUNDATION ACCEPT THE 2017 CONSERVATION PARTNER OF THE YEAR AWARD FROM THE JOHN MARSHALL SOIL AND WATER CONSERVATION DISTRICT. L-R: KRIS JARVIS, JOHN MARSHALL SOIL AND WATER; CHRIS MILLER AND CLAIRE CATLETT, PEC; MARYANNA KIEFFER, THE VOLGENAU FOUNDATION; CELIA VUOCOLO, PEC; A. GRAY COYNER, JOHN MARSHALL SOIL AND WATER. *Photo by Michael Trop*

Ms. Laurie Volk

Mr. William J. Curtin, III

Mr. and Mrs. Russell A. Hitt

Mr. Michael D. Ware and  
Ms. Mary C. Ware

Estate of Charles E. Dorkey, Jr.

Mr. E. Scott Kasproicz

Mr. and Mrs. Rene Woolcott

Duffy Family Foundation

Mary Lynn and Nick Kotz

Mrs. Frances M. Dulaney

Laughlin-Beers Foundation

Dun Foundation

Lynx Investment Advisory, LLC

Mr. and Mrs. Thomas  
F. Dungan, Jr.

Mr. and Mrs. Charles  
G. Mackall, Jr.

Dr. Ellen Stofan and  
Mr. Tim Dunn

Bonnie Mattingly

Glenn and Natalie Epstein

Betty McGowin  
Charitable Trust

Chuck and Kim Cory

Mr. Robert C. Musser and  
Ms. Barbara L. Francis

Mrs. Florence B. Fowlkes  
and Mr. Wisner

National Wildlife Federation

Mr. George Grayson

Mr. Robert J. Norton, Jr.

Seth and Caroline Heald

Mr. and Mrs. William G. Prime

### Steward of the Piedmont

\$5,000 - \$9,999

Anonymous

David and Jennifer Aldrich

Christopher and  
Laurie Ambrose

The Marjorie Sale Arundel  
Fund For The Earth

Bainum Family Foundation

Dr. and Mrs. Karl M. Beier

Ms. Tia Schurect and  
Mr. Jay Golding

Mr. and Mrs. Alfred  
P. Van Huyck

Van Metre Companies

Wegmans Food Markets, Inc.

Dr. and Mrs. William Wolf

Mr. and Mrs. Peter H. Wood

Mr. and Mrs. Martin Woodard

### Patron of the Piedmont

\$1,000 - \$4,999

Anonymous

Ms. Lisa Abeel

Drs. Kent Allen and Rae Stone

American Foundation

Frederick and  
Christine Andreae

Ms. Anita Antenucci

Ms. Peggy Augustus

Dr. and Mrs. John F. Bagley

Mrs. Agatha S. Barclay

Mr. and Mrs. Harry  
K. Benham, III

The Bird Family Fund

Ms. Carrie B. Blair

Mr. Paul Blue and  
Ms. Dianne Beal

Mr. and Mrs. Thomas Borger

The Brennan Family  
Foundation

Brzezinski Family Foundation

Mr. and Mrs. Stephen Bullock

Mr. and Mrs. Childs F. Burden

Mr. and Mrs. Landon Butler

The Honorable Robert  
Calhoun and Mrs. Calhoun

Calvert S. Bowie,  
Bowie Family Fund

Mr. and Mrs. James  
M. Campbell, III

Dr. and Mrs. Jack B. Carter

The Cedars Foundation, Inc.

Mr. Chris Cerrone

Mr. and Mrs. George  
M. Chester, Jr.

Civil War Preservation Trust

Mr. and Mrs. Sean W. Clancy

Andrew and Leslie Cockburn

Marianna P. Cohen

Lynn R. Coleman and  
Sylvia de Leon

Mr. and Mrs. John Coles

Mr. James C. Collins and  
Ms. Virginia Donelson

Mr. and Mrs. Mark Collins

Mr. and Mrs. Bertrand  
P. Collomb

Commonwealth of Virginia

Community Foundation for  
the National Capital Region

David and Dera Cooper

County of Fauquier

Rustom Cowasjee

Mr. and Mrs. Jesse C. Crawford

Culpeper County Government

Thomas S. Foster and  
Steven J. Dahllof

Mr. and Mrs. J. Bradley Davis

Mr. and Mrs. James  
G. Davis, Jr.

Mr. and Mrs. Robert deButts

Mr. and Mrs. Thomas  
H. Delashmutt

Mr. and Mrs. John B. Denegre

Mr. Mitchell S. Diamond  
and Ms. Lucy Bernstein

Mr. and Mrs. William M. Dietel

Mr. and Mrs. Edward Dolnick

Helen and Ray DuBois

Mr. and Mrs. Tom G. Evans

Facebook

Farm Credit of the  
Virginias, ACA

Feast, LLC

Mr. and Mrs. Andrew Ferrari

Fifth Generation Inc.

Flachs Family Fund

Ms. Diana Foster and  
Mr. Thomas Jones

Pam and Keith Foster

Mr. and Mrs. Robert  
L. V. French

Mr. and Mrs. Jim Gehris

Mr. Thomas T. Gilpin



The Honorable  
Douglas Ginsburg

Mr. and Mrs. Porter J. Goss

Mr. Stephen Graham

Mr. Terry Grant

The Elizabeth Ireland  
Graves Foundation

Mr. and Mrs. W. Cabell  
Grayson, Jr.

Great Outdoor Provision Co.

T.J. Guarriello, Jr.  
Family Foundation

Mr. and Mrs. Peter Hallock

Mr. and Mrs. R. Barry Hamilton

Drs. Jeffrey and Lucille Harris

Ms. Jessie M. Harris

Ms. Maureen I. Harris

Mr. and Mrs. Paul Hasse

Mr. and Mrs. Joseph  
W. Henderson

Ms. Georgia H. Herbert, Esq.

Mr. and Mrs. Landon Hilliard, III

Ms. Judith R. Hope

Mr. David Humm

Mr. and Mrs. Robert P. Irwin

Mr. and Mrs. C. O. Iselin, III

Dr. and Mrs. Ronald  
D. Jackson

Mr. and Mrs. John Jacquemin

Mr. and Mrs. William S. Janes

Janet Jones Stone Foundation

John Marshall Soil and Water  
Conservation District

Mr. and Mrs. Bruce J. Jones

Dr. Judith K. Jones and  
Mr. William C. Rogers

Mr. Joe Kasputy and  
Mrs. Vicky Van Mater

Mr. Alton Keel, Jr.

Mrs. Elizabeth B. Keffer

Ms. Anne Keiser and  
Mr. Douglas Lapp

Mr. Scott Kelly

Mr. David L. Kennell and  
Ms. Clare Lindsay

Mr. and Mrs. Don King

Nicolaas and Patricia  
Kortlandt Fund

PEC BOARD MEMBER LYNN WILEY (RIGHT) WITH MALCOLM MATHESON III, ROBERT DUVAL AND LUCIANA PEDRAZA AT THE PEC ANNUAL BALL. Photo by Paula Combs



## In memory of Frederick H. Prince

Frederick Prince loved the Virginia Piedmont and demonstrated his passion over many decades. His visionary leadership and steady support of many organizations, including The Piedmont Environmental Council, the Coalition for Smarter Growth, and The Journey Through Hallowed Ground Partnership, helped transform the future of both the Virginia Piedmont and the Washington metropolitan region. Mr. Prince enabled the highest level of conservation, historic preservation, environmental protection and regional planning for more than four decades.



Mr. Prince encouraged PEC to recognize the potential for conservation and civic engagement, both before and after the iconic campaign over the proposed Disney's America theme park in 1993 that captured the attention of the entire nation. Mr. Prince enabled PEC to promote voluntary permanent conservation of more than 400,000 acres within the Piedmont region. In addition, through the Prince Charitable Trusts, he invested improvements to the Appalachian National Scenic Trail and Sky Meadow State Park along the Blue Ridge, the protection of Gilbert's Corner at the intersection of Route 15 and Route 50 in Loudoun County, and the establishment of The Journey Through Hallowed Ground National Heritage Area and National Scenic Byway.

Our region, the Washington metropolitan area, and the Commonwealth of Virginia are far better places because of the profound commitment Mr. Prince made to all of us. His kindness and generosity, his sense of humor, his loyalty, and his love of life will be deeply missed.





OUR 2017 FELLOWSHIP PARTICIPANTS USED A 15 PASSENGER VAN TO TRAVEL THROUGHOUT THE REGION FOR FIELD VISITS TO FARMS, HISTORIC LANDS AND OTHER SITES IN THE PIEDMONT.

Mr. and Mrs. Brian Krebs	Ms. Elizabeth Roessel Manierre	Cliff Miller Family Endowment
Mr. and Mrs. Steven Lamb	Mr. Redmond L. Manierre	Mary V. Mochary
Ms. Anna T. Lane	Mark and Amy Tercek Foundation	Mr. and Mrs. Robert Monk
Mr. and Mrs. John Lewis	Mr. Chuck Boyd and Ms. Jessica T. Mathews	Monomoy Fund, Inc.
Loudoun Benefit Horse Show Foundation	Ms. Josette Maurer	Morton Family Foundation
Loudoun County Farm Bureau, Inc.	Mr. and Mrs. John McCarthy	Mr. Hamilton Moses, III and Ms. Alexandra Gibson Moses
Lennart and Lena Lundh	McGraw Foundation	Mountain Laurel Foundation
Richards S. Lykes Community Fund at the Northern Piedmont Community Foundation	Mr. Sean McGuinness and Ms. Lori Keenan	Ms. Jessica Nagle
Dr. and Mrs. M. P. Mackay-Smith	Mr. Stevenson McIlvaine and Ms. Penelope Breese	Mr. and Mrs. Arthur Nash
Makena Capital Management	Mr. and Mrs. Charles F. McIntosh	National Park Service — Appalachian Trail
Mr. and Mrs. Dan Malcom	Mr. Christopher L. McLean	Northern Piedmont Community Foundation
The Frank Mangano Foundation	Mr. and Mrs. Stephen J. McVeigh	Mr. and Mrs. James G. Northup
		Mr. James Iker and Mr. Hayes Nuss

Susan W. Oldfield	Mrs. Suzanne H. Scheer	Mr. and Mrs. Thomas Thorpe
George and Susan Overstreet	Mr. and Mrs. Charles H. Seilheimer, III	Tri-County Feeds, Fashions and Finds
Mr. Michael A. Pausic and Ms. Kelley A. MacDougall	Mr. and Mrs. Charles H. Seilheimer, Jr.	Trout Unlimited Rapidan Chapter
Mr. Thomas G. Pellikaan	Mr. and Mrs. J. Donald Shockey, Jr.	Mr. George Tsantes
Mr. and Mrs. Mark Perreault	Mr. Hunter Lewis and Ms. Elizabeth Sidamon-Eristoff	Mr. and Mrs. James E. Ukrop
Mrs. Nicole Perry and Mr. Andrew Stifler	Skyemar Foundation	Valley Charitable Trust
Scott and Page Peyton	The Honorable and Mrs. S. Bruce Smart	Vanguard Charitable
Mr. Trevor A. M. Potter and Mr. Dana S. Westring	Southern Exposure Seed Exchange	Virginia Environmental Endowment
Frederick H. Prince and Diana C. Prince Foundation	Mrs. Harold R. Spencer	Virginia Food System Council
Mrs. Diana C. Prince	Mr. and Mrs. Robert Spicer	Virginia Tech
Mr. Michael J. Cowell and Ms. Patti J. Psaris	Mr. and Mrs. Joseph A. Spytek	Lisa Volgenau and Chris Fitzgerald
Rappahannock Electric Cooperative	Mr. John R. Staelin and Elizabeth F. Locke	Rod Walker
Mrs. Lucy S. Rhame	Mr. and Mrs. Michael Stanfield	John W. Warner, IV Foundation, Inc.
John and Margaret M. Richardson	Mr. T. Garrick Steele	Nicole Watson and Jason Paterniti
David Alberswerth and Cary Ridder	Michael and Margrete Stevens	Mr. and Mrs. James Wiley
Ms. Stephanie Ridder and Mr. John Beardsley	Drs. Rae Stone and Kent Allen	Mr. and Mrs. David F. Williams
Rodgers Family Foundation Fund	The Whitney and Anne Stone Foundation	Mr. and Mrs. G. Cabell Williams
Benjamin J. Rosenthal Foundation	Ms. Page D. Styles	Mr. and Mrs. Michael Williams
Rossetter-Cuthbert Fund	Mr. and Mrs. John H. Sullivan	Virginia D. Wilson
Mr. and Mrs. J. Bradford Ryder	Mr. and Mrs. John L. Sutton	Ms. Margaret H. Wise
Mr. and Mrs. Thomas R. Salley, III	Tara Foundation, Inc.	Mrs. Loring Woodruff
Mr. and Mrs. Tony Samra	Mr. and Mrs. Donald Taylor	Gregory M. Yates
	Dr. Nancy Telfer	
	The Wisker Family Fund	



## Supporter of the Piedmont

\$500 - \$999

Anonymous

Mr. Ralph Dewey and Ms.  
Elizabeth Barratt-Brown

Mr. Dennis M. Barry

Mr. and Mrs. David Bass

Lindsay S. Beale

Bessemer Trust

Ms. Elizabeth Billings

Cheryl L. Boland

Mr. Brooks Bowen

Dr. Lindsay Brancato

Ms. Catherine W. Brown

Mr. Jeff Burrige

Mr. and Mrs. Tony Buzzelli

Mr. and Ms. Harry Byrd, IV

Mr. and Mrs. Robert Cary

C. Hunter and Meghan Cloud

T. Allan Comp and  
Selma Thomas

Mr. and Mrs. Roger Courtenay

Dr. and Mrs. Reynolds Cowles

Drs. Joseph and Pamela Davis

Ms. Susan Day

Ms. Josephine de Give

Read deButts

Mr. and Mrs. C. Stanley Dees

Dr. Morgan D. Delaney  
and Mr. Osborne Mackie

Mr. John G. Dennis

Robert Dove

Mrs. Barbara H. duPont

Mr. and Mrs. Roy Dye

Mr. and Mrs. Robert S. Eliot

Mr. and Mrs. Scott Elliff

Mark and Elizabeth Epley

Dr. and Mrs. H C  
Eschenroeder, Jr.

Mr. Richard A. Farland

Mr. and Mrs. William A. Ferster

Mr. A. Wray Fitch

Mr. and Mrs. Charles Fortuna

Thomas S. Foster and  
Steven J. Dahllof

Mr. James Fox

Mr. Brandon Garrett

Mr. and Mrs. John D. Gavitt

Mr. and Mrs. Donald Goff

Gwen, Howard, Jacob  
and Nina Goodkin

Greene County Economic  
Development and Tourism

Mr. and Mrs. Dan D. Gregg

Dr. and Mrs. Charles  
B. Greyson

Grills Family Foundation

Mr. and Mrs. Theodore  
Guarriello

Mr. Michael. T Hall

Mr. and Mrs. Paul T. Hasse

Mrs. Raymond Heatherton

Ms. Gertraud Hechl

Mr. and Mrs. Thomas  
L. Higginson, Jr.

Ms. Mary Hutton

iMARK Holdings, LLC

Integral Yoga Natural Foods

Ms. Rose E. Jenkins

Ms. Sara Johnson

Mr. Tom Johnson

Junior North American Field  
Hunter Championship

Michael and Margaret Kane

Mr. and Mrs. Kenneth  
K. Knapp Jr.

Mr. Henry Lavine and  
Mrs. Ronda McCrea

Mr. Kurt Lawson

Mr. Hunter Lewis and Ms.  
Elizabeth Sidamon-Eristroff

Dale and Ingrid  
Hinckley Lindsay

Lost Corner Farm

Mr. Osborne Mackie and  
Dr. Morgan Delaney

Madwoman Project

Maizemoor International Inc

Dr. and Mrs. Paul Massimiano

Drs. Alan and Julie Matsumoto

Randall L. and  
Catherine D. Mayes

Mr. and Mrs. Michael  
McGettigan

Kim and Marla McIntyre

Ms. Katherine McLeod

Mr. and Mrs. Charles Medvitz

Mr. and Mrs. Robert Menuet

Elizabeth Mercedes

Capt. Robert Muhlbaugh and  
Miss Payton Bodecker

Mr. Bryan Mitchell and Mrs.  
Constance Chamberlin

Col. and Mrs. John  
Moring, III, USAF (ret.)

National Parks Conservation  
Association

Old Bust Head Brewing  
Company, LLC

Dr. Michael Olding

Mr. Greg Pellegrino

Dr. and Mrs. Michael J. Petite

Mr. Dulany Morison and  
Mrs. Eleanor Morison

Ms. Linda Pranke

Mr. Kevin Ramundo and  
Ms. Anne D'Ignazio

Mrs. Emily P. Ristau

Rockley Foundation

Dennis and Ann Rooker

Ms. Carolyn Ross

Susan W. Russell

Ms. Mary B. Schwab

Mr. and Mrs. Jen-  
William H. Scott

Kathy and Nick Smart

Mrs. Selena Smart and  
Mr. David Morris

Mr. William Snyder and  
Dr. Laurin Mack

Mr. and Mrs. Mike Springman

Mr. and Mrs. Thomas  
Stapleton

Mary Lou Steptoe

PEC'S GEM BINGOL AND OYA SIMPSON. Photo by Paula Combs





# The Bill Backer Legacy Society

**N**amed for the avid conservationist and former Piedmont Foundation President Bill Backer, Bill rallied concerned citizens to participate in early efforts to plan for future growth and conservation in Virginia.

If we want strong, resilient communities for generations to come—then it's essential and urgent for



us to invest in conservation. We invite you to make a commitment to preserve the Piedmont by leaving a gift in your will and becoming a member of the Bill Backer Legacy Society. Help ensure the

Piedmont remains a beautiful and productive place to live, work and visit for generations to come.

If you have already included PEC in your estate plans, please let us know so we can include you in the Legacy Society. For more information please contact: Nan Moring, Director of Development, at (540) 347-2334 ext. 7005 or [nmoring@pecva.org](mailto:nmoring@pecva.org).

## Friends of the Piedmont

\$100 - \$499

Mr. and Mrs. Sidney Stern

Ms. Verna Stern

Ms. Beverly Stickles

Stillfield Fund 1 —  
CAC Foundation

Mr. Jefferson S. Strider

Mr. and Mrs. Reid P. Stuntz

The Stern Foundation

Thomas Jefferson  
Foundation Inc.

Mr. and Mrs. George  
R. Thompson, Jr.

Mr. and Mrs. Oscar Revere

Mr. and Mrs. Bill Walde

Mr. Christopher R. Wall

Fraser and Susan Wallace

Mr. Douglas Ward and  
Mr. Earl Johnson

Mr. and Mrs. John Weidlein

Ms. Sally Weldon

Westchester Foundation

Mrs. Margaret White

Ms. Ashley Whitner

Mr. and Mrs. Bryan Wilkins

Mr. William C. Wilkinson, III

Willowsford Farm

Mr. and Mrs. Thomas Wiseman

Mr. and Mrs. Tucker Withers

Wolf Creek Farm

Anonymous

Mr. and Mrs. Sid Abrams

Ms. Catherine Adams

Mr. Norman Addington

Mr. and Mrs. Donald G. Akers

Dr. Martin Albert

Mr. Mark S. Allen

Sandra and Ken Alm

Mr. David A. Slosman  
and Mrs. Gwen Alred

Mr. and Mrs. Roger Amato

Ms. Kathleen M. Ambrose

Mr. and Mrs. Mark D. Andersen

Mr. and Mrs. Donald  
J. Anderson

Mr. John Anderson

Mr. and Mrs. Margaret  
Coles Anderson

Mr. and Mrs. Paul Anikis

Mr. Paul Anthony

Mr. and Mrs. David Arnold

Mr. and Mrs. Timothy L. Ashley

Ms. Leslie Ashman

Ms. Sarah Atkins

Mrs. Sue Attisani-Lyman

Mr. and Mrs. Philip Audibert

Mr. and Mrs. Mark Augenblick

Ms. Julia Baer

Mrs. E. G. Baird

Ms. Sara Lee Barnes

Mr. and Mrs. Barnhardt

Mr. and Mrs. Ralph Bates

Mr. Charles M. Baxter

Ms. Katrina H. Becker

Mr. and Mrs. Malcolm Bell

Mr. F. K. Benfield

Ms. Ingrid Berger

Mr. and Mrs. Mitchell  
H. Bernstein

Ms. Elizabeth Berry

Ms. Cynthia Beyer

Eleanor and Francis Biasioli

Ms. Elizabeth Billings

Ms. Gem Bingol and Mr.  
Richard Fausnaught

Dr. Andrew Bishop and  
Mrs. Jane C. Bishop

Miriam Bishop

Mr. and Mrs. Charles  
W. Blessed, Jr.

Mr. and Mrs. Langhorne Bond

Bradley and Tandy Bondi

Mr. and Mrs. John J. Bonsee

Ms. Kristina Bouweiri

Ms. Susan R. Bowen

Ms. Louisa Bradford

Mr. Kevin Breeden

Mr. and Mrs. Harrison  
P. Bresee, Jr.

Gretchen and Boris Brevnov

Mr. and Mrs. Ike Broaduss

Mr. Robert D. Broeksmit and  
Ms. Susan G. Bollendorf

Dr. Lincoln Brower

Ms. Diana T. Brown

Thomas and Briana Burk

Ms. Mary A. Burkhart

Mr. and Mrs. W.  
Patrick Butterfield

Dr. and Mrs. John Buursink

Mr. and Mrs. Keith M. Byergo

Mr. Perry Cabot

Mr. and Mrs. Donald H. Cady

Mr. and Mrs. Jonathan Cannon

Mr. Michael A. Caplin

Mr. John Carey

Mr. and Mrs. Robert Carter

Mr. and Mrs. James  
R. Carter, III

Mr. Vernon Cassin

Mary Catlett

Dr. and Mrs. Richard H. Catlett

Ms. Mary O. Chatfield-Taylor

Mr. and Mrs. John  
Cheatham, III

Mr. and Mrs. Jeffrey Christie

Bill and Deirdre Clark

Mr. and Mrs. Michael Clayton



Mr. Brian Cohn	Ms. Karen Davenport	Mr. Robert Ehinger	Mr. and Mrs. Greg Foster	Mr. Bryon Fusini and Mr. Stephen J. Waudby	Miss Stuart T. Greene
Mr. and Mrs. Joseph Coleman, Jr.	Ms. Darragh Davis	Mr. John Eisenhart	Mr. Sam Fowler	Drs. Prasad and Jyothi Gadde	Ms. Anne Grenade
Dr. Bruce Collette	Ms. Alexandra deBorchgrave	Eugene Elder	Ms. Christine Fox	Mr. and Mrs. Christopher Gale	Mr. Edward Grennan and Ms. Emily Granville
Mr. and Mrs. Melvin H. Colvin, Jr.	Mr. and Mrs. Thomas M. deButts	Doug and Norma Epley	Karen Fox and Dirck Holscher	Ms. Megan Gallagher	Mr. and Mrs. Bruce Gup-ton
Community Foundation Serving Richmond and Central Virginia	Mr. and Mrs. Thomas Decker	David and Elaina Evans	Ms. Nadra Franklin	Ms. Lucie M. Garrett	Mr. Jeffrey Gutman
Mr. and Mrs. David F. Condon	Ms. Alice DeKany	Mr. and Mrs. Dennis Fairbrother	Mr. Jeffrey L. Freeman and Ms. Lauren Farnsworth	Mr. and Mrs. David Gerrish	Mr. Russ Guzdar
Ms. Diana E. Conway	Mr. Thomas Joynt and Ms. Barbara DeRosa-Joynt	Ms. Melanie Fein	Mr. Allen Freemyer	Mr. and Mrs. Robert J. Gilbert	Mr. and Mrs. Eugene Hack
Mr. Peter J. Cook	Mary Desmond	Mr. Daniel E. Fisher	Mr. and Mrs. Paul Fry	Mr. and Mrs. Dennis Gingold	Mr. and Mrs. John C. Hale
Ms. Jane Cowan	Dr. and Mrs. Don E. Detmer	Ms. Sarah S. Forth, Ph.D.	Mr. James T. Fuller, III and Ms. Catherine T. Porter	Mr. and Mrs. Richard Gookin	Mr. Garland T. Hall
Mr. and Mrs. Claiborn Crain	Ms. Julie Diehl				
Dr. and Mrs. Richard S. Crampton	Mr. Kevin DiLallo and Mr. Jack Krumholtz				
Mrs. Winfield P. Crigler and Mr. Timothy A. Harr	Mr. David Dipietro and Mrs. Barbara Bissinger Dipietro				
Ms. Gayle R. Cross	Dr. William McCormick and Dr. Lydia Donaldson				
Mr. and Mrs. David Crowe	Mr. and Mrs. John J. Donovan, Jr.				
Mr. Steve Crutchfield	Mr. Richard Dorrier				
Mr. Robert Drake and Mrs. Tania Cubitt	Mr. and Mrs. Guy O. Dove, III				
Mr. and Mrs. Raymond P. Cultrera	Alan and Susan Dranitzke				
Mr. and Mrs. James S. Cumming	Ms. Louisa Duemling				
Mr. Mike Curtin	Joanne and Morgan Duncan				
Mr. and Mrs. William H. Dalton	Mr. Chris Dunn				
Mr. David Daniel	Mr. and Mrs. Jake Dunning				
Ms. Elizabeth E Daniel	Dr. and Mrs. William Duvall				
Mr. Travers Daniel	Mr. Bruce Dwyer				
Mr. and Mrs. Anderson Dart	Ms. Jane Eberhardt				
	Edgemont Farm, LLC				

RAPPERS CULLEN "FELLOWMAN" WADE (LEFT), ENVY (SECOND FROM LEFT) AND BERNARD HANKINS (RIGHT) FACILITATED A LIVELY DISCUSSION ABOUT GREENWAY TRAILS AT A 2017 EVENT CO-SPONSORED BY PEC AND THE CACF IMAGINATION FOUNDATION. SPECIAL GUEST CHANCE DICKERSON (CENTER) JOINED FOR THE ENCORE.  
Photo by Meredith Cole







GUESTS GATHER FOR THE 2017 BLUEBELL WALK AT CEDAR RUN HOSTED BY MARGRETE AND MICHAEL STEVENS.  
Photo by Cynthia Benitz

Mr. Steven Hall	Dr. and Mrs. Ken Henson	Mr. Kirby R. Hutto
Halle Family Foundation	Ms. Susan L. Heytler	Mr. John Ince
Ms. Barbara Hamran	Feroline Higginson	Mr. R. Phillip Irwin
John and Emily Hannum	Ms. Ellen Hill	Ms. Linda Y. Ingram
Ms. Mary C. Harrell	Mr. Albert P. Hinckley, Jr.	Ms. Carol Ivory
Mr. and Mrs. Juergen Hauber	Mr. James Hiney	Mr. Nicholas Smith and Ms. Deborah J. Jacobs
Mr. and Mrs. Matthew Haws	Mr. Peter Hoagland	Dr. Roy Jacobson and Mrs. Carolyn E. Hitchcock
Dr. and Mrs. William H. Hay	Mrs. Sarah S. Hodgkin	Jane Covington Restoration
Mr. Mark Haynes	Mr. and Mrs. James Hoecker	Mark W. and Gail L. Jeffries
Dr. and Mrs. Larry Heath	Mr. George A. Horkan, III	Mr. and Mrs. T. Christopher Jenkins
Sheryl B. Heckler	Jane Humpstone	Mr. and Mrs. Nicholas Jenkins
John L. Helmlly and Caroline M. Nash	Ms. Linda C. Hunt	Mr. Bland Jensen
Mrs. Achsah Henderson	Ms. Martha I. Hunt	Mr. and Mrs. Dean H. Jewett
Mr. and Mrs. Paul Henderson	John and Elna Hunter	
	Hunting Creek Garden Club	

Ms. Cynthia F. Johnson	Ms. Catherine C. Larmore	Lindsay Marshall
Mr. Bennett Johnston	Mr. and Mrs. Todd A. LaRochelle	Mr. William R. Marshall
Ms. Patricia Johnston	Ms. Jocelyn Lasher	Mr. Colvin Matheson
Mr. and Mrs. Edward Jones	Ms. Aliene M. Laws	Mr. Malcolm Matheson, III
Mr. and Mrs. Tommy L. Jones	Mr. and Mrs. Tom Lawson	Mr. and Mrs. Robert Mayo
Ms. Tamara Jovovic	Mr. Douglas H. Lees, III	Ms. Joann S. Mazzetta
Ms. Ann Jurczyk	Mrs. Judith A. Lefferts	Mr. and Mrs. Richard Mazzucchelli
Mr. David H. Kaplan	Pam and Tim Lettie	Mr. and Mrs. Timothy McBride
Drs. Lee and Neal Kassell	Keith D. and Bari R. Livingston	Dr. Lydia Donaldson and Dr. William H. McCormick
Ms. Meg Keeley	Mr. and Mrs. Andrew R. Lewis	Ms. Mary L. McDaniel
Mr. Richard Keeling	Mr. and Mrs. Michael Lewis	Mr. and Mrs. James McDermott
Ms. Rachel Keen	Mr. and Mrs. William Lewis	Mr. and Mrs. Henry D. McHenry, Jr.
Mr. Richard S. Kelso	Mr. and Mrs. Timothy Lindstrom	Michael McKechnie
The Honorable Laura Kennedy and Mr. John Feeney	Mr. and Mrs. Trowbridge T. Littleton	Dr. Russell B. McKelway and Dr. Laura Dabinett
Mr. Christopher Kent and Mr. James Burns	Mark and Denise Lorenz	Dr. Peter and Mrs. Margaret McLean
Mr. Greg Killmeyer	Loudoun Heritage Farm Museum	Mr. and Mrs. Harry McNaught
Ms. Suzanne Kim	Mr. Thomas Lovejoy	Ms. Susannah McNear
Mr. and Mrs. Peter Kirby	Yakir and Claire Lubowsky	Howard and Candy Means
Mr. and Mrs. Robert J. Kirchner	Ms. Sharon G. Luke	Mr. Neil Means
Mr. Steven Kirstein	Mr. and Mrs. Talbot Mack	Ms. Janel T. Melgaard
Garnett Kiser	Mr. and Mrs. Justin Mackay-Smith	Mr. and Mrs. Joseph Melnik
Bryant and Martha Kling	John Magee	Ms. Elizabeth Merritt
Mr. and Mrs. Tom Knaus	Mr. and Mrs. David W. Mailler	Mr. Stephen Metruck and Ms. Peggy Duxbury
Mr. Dennis Kruse	Mr. Stewart Marr	Mr. Bud Meyer
Ms. Barbara Kuckenbecker	Mr. John F. Marshall and Mrs. Cri Kars-Marshall	Ms. Elizabeth K. Meyer
Mr. and Mrs. Michael A. Lamana		
Mr. and Mrs. Robert Lander		



Ms. Jacqui Michel

Mrs. Carol Miller

Mr. and Mrs. William S. Miller

Mr. and Mrs. Michael G. Miller

Mr. John K. Millholland IV

Michele Mitchell

Mr. Jeffrey Modliszewski

Mr. William Mohrman

Monroe and Crocker, PC

Mrs. Laurel Moore and

Mr. James M. White

Jim and Brenda Moorman

Ms. Maralyn D. Morency

Mr. Thomas Morgan

Mr. and Mrs. George H. Morison

Douglas and Ramona Morris

Ms. Helen Ida Moyer

Mr. Andrew Murphy

Ms. Donna Murphy

Matthew and Mary Murray

Mr. and Mrs. Stephen Murray

Myers and Woods Appraisal Group

Mr. and Mrs. John F. Myers, Jr.

Mr. Eric Nagy

Mr. Timothy C. Neale

Commander and Mrs.  
Nathaniel P. Neblett

Ms. Hana Newcomb

Ms. Susan Nicholson

Mrs. Jane M. Noland

Ms. Diana Norris

Northern Virginia Electric  
CooperativeJoy M. Oakes and  
Thomas J. CassidyDr. Timothy Ober and  
Mrs. Janie Shrader

Mrs. Vibeke Ober

GUESTS GATHER TOGETHER TO HEAR SPEAKERS AT PEC'S EVENT COMMEMORATING GREENE COUNTY'S MOUNTAIN HERITAGE.

Photo by Tiffany Parker



## In memory of Gina Farrar

The Piedmont lost a visionary businesswoman and avid conservationist with the death of Virginia Howard “Gina” Farrar. In addition to her support of PEC, Gina was also one of the founders of the Partnership for Warrenton (recently renamed Experience Warrenton), focused on invigorating the town’s commercial district where she created vibrant retail establishments that enhanced Old Town Warrenton.

Gina will be especially remembered for the creation of the Natural History Day Camp that she organized in partnership with PEC and The Warrenton Garden Club. The camp, established in the mid-1980s, ran annually at her beloved farm, Chapultepec, along the banks of the Rappahannock River. Over the years, her contributions to preserving our environment and nurturing hundreds of young people were recognized nationally by the Garden Club of America; statewide by the Garden Club of Virginia; and locally by the John Marshall Soil and Water Conservation District. Hundreds of families trace their love of nature and understanding of the Piedmont to the experience they gained through Gina across several generations.





Mr. Joachim Otero	Chip and Mary Queitzsch	Margaret and Sidney Silver	Mrs. Laura TeKrony	Theo Van Groll and Charlotte P. Black-Van Groll	Ellen (Dootsie) Wilbur
Mr. and Mrs. Timothy Overcash	Ms. and Mr. Jane Radford	Michael and Oya Simpson	Bob and Sara Templeman	Donna W. and Scott B. Vande Pol	Mr. and Mrs. Harvey J. Wilcox
Dr. Helen Schwiesow Parker and Mr. J. B. Riggs	Judy Rasmussen	Mr. Dave Smarr	Mrs. Nancy Terseck	Varian YourCause LLC	Ms. Elise H. Wilkins and Mr. Fred Drunagel
Ms. Tiffany Parker and Mr. Watsun Randolph	Mr. and Mrs. Kenneth Reid	Ms. Barbara Smith	The Bench Trail Fund	Mr. Eric Venclik	Mr. Glenn Willard
Mr. John R. Parks	Laura Revitz	Carolyn Smith	The Endangered Species Coalition	Ms. Anita Vere-Nicoll	Mr. Stirling L. Williamson, Jr.
Mr. Scott Pearce and Ms. Rebecca Lindsay	Mr. and Mrs. J. A. Reynolds, II	Mr. and Mrs. G. D. Smith	Mr. and Mrs. Eugene Theroux	Virginia Conservation Network	Steve and Annette Willis
Mr. and Mrs. Peter Pejacsevich	Mr. and Mrs. Peter G. Rice	Mr. Mark T. Snyder	Ms. Julia D. Thieriot	Virginia Society of Ornithology	Sylvia J. Wilson
Ms. Ellen Percy-Miller	Mr. James E. Rich, Jr.	Mr. and Mrs. John Sodolski	Mr. and Mrs. Donald A. Thompson	Mr. William von Raab	Kate and Jeb Wofford
Ms. Shelley Perry	Ms. Robina Rich-Bouffault	Mr. and Mrs. Larry Spaine	Mr. and Mrs. Robert C. Thompson	Mr. and Mrs. Mitch Voss	Thomas and Barbara Wolf
Pat Peters	Robin Rider	Mr. Trevor Springman	Mr. and Mrs. W. M. Thompson, Jr.	Mr. James P. Waite, III	Ms. Paula Wolferseder Yabar
Mr. Karl J. Pfefferkorn and Ms. Katherine Birdsall	Mr. and Mrs. Dudley Rochester	Ms. Lucia Stanton	Mr. and Mrs. Stephen E. Thurston	Mr. and Mrs. Frank S. Walker, Jr.	Mr. Jack Wood
Mr. Geoff Poitras	Ms. Evelyn M. Rollison	Mr. and Mrs. Charles N. Steele	Ms. Kathleen Timberlake	Mr. and Mrs. Richard S. Wallach	Ms. Sarah Woods
Carolyn C. Polhemus	Mr. and Mrs. Kenneth Rop	Mr. Jeff Stehm	Ted and Anne Stelter	Mr. and Mrs. Mark Warren	Mr. and Mrs. T. K. Woods, Jr.
Ms. Martha Polkey	Mr. Victor Rosenberg	Ted and Anne Stelter	Dr. and Mrs. Eric R. Steuer	Ms. Viviane M. Warren	Mr. and Mrs. Henry N. Woolman, III
Trip Pollard and Elizabeth Outka	Mr. Randall G. Salzman	Jimmy M. and Nancy C. Stone	Mr. and Mrs. Vincent C. Tompkins	Ms. Barbara Wayne	Mr. and Mrs. William Worrall
Mr. Stewart R. Pollock	Ms. Betty Sams	Mr. and Mrs. Peter Storm	Mr. and Mrs. Amadeo C. Tortorella	Mr. and Mrs. Matt Weeden	Alan and Irene Wurtzel
Ms. Anna E. Porter	Mr. and Mrs. David Sarr	Mr. and Mrs. Charles W. Strittmatter	Barbara Tourtelot and Lee Johnson	Mr. and Mrs. Martin Wehrle	Dr. and Mrs. Harold E. Young
Mr. and Mrs. E. Bryson Powell	Mr. and Mrs. Steve Satterfield	Susan Bailey and Sidney Buford Scott Endowment Trust	Mr. John L. Trimmer	Ms. Nancy Weiss	Dr. Deborah and Mr. John Randall Younger
Ms. Marion K. Poynter	Mr. and Mrs. Peter Schaefer	Susan W. Davenport & W. Edgar Spigle Fund in CACF	Ms. Michele Trufant	Welbourne Guest House	Mr. and Mrs. Gary Younkinn
Mr. and Mrs. Stephen C. Price	Mr. Carl Schmitt	Ms. Laurie Tarpey	Peggy and Carter Tucker	Dr. Anthony L. McCall and Ms. Madelyn F. Wessel	Mr. and Mrs. Arthur A. Zimmerman
Mr. and Mrs. Jerome Prochaska	Mr. Donald L. Schupp, Jr.	Ms. Abigail Taylor	Thomas and Susan Tuttle	Alice and Curtis West	Ted and Lucy Zimmerman
Mr. and Mrs. Henry H. Purcell, Jr.	Anne D. Schwartz	Ms. Carole Taylor	Mr. and Mrs. Jeffrey Twining	Ms. Lynda S. White	Mr. John F. Zugschwert
Mrs. Lewis M. Purnell	Ms. Betty Scott	Mr. John J. Taylor and Mrs. Jeannette Walls	Mr. John Uhar	Ms. Carey C. Whitehead	
Ms. Matilda Purnell and Ms. Alice Cannon	Catherine Scott and Jamie Resor	Mr. Stewart F. Taylor	Betty S. Valmarana	Mr. and Mrs. Russell Whitfield	



## PEC Staff

### Land Use

Gem Bingol, CLARKE & LOUDOUN COUNTIES  
Julie Bolthouse, FAUQUIER COUNTY  
Dan Holmes, DIRECTOR OF STATE POLICY

### Land Conservation

Claire Catlett, CULPEPER & RAPPAHANNOCK COUNTIES  
Peter Hujik, MADISON & ORANGE COUNTIES  
Michael Kane, DIRECTOR OF CONSERVATION  
Peter Krebs, COMMUNITY OUTREACH  
COORDINATOR, ALBEMARLE/CHARLOTTESVILLE  
Tracy Lind, CLARKE, FAUQUIER & LOUDOUN COUNTIES  
Rex Linville, ALBEMARLE & GREENE COUNTIES  
Celia Vuocolo, HABITAT & STEWARDSHIP SPECIALIST

### Farms and Food

Jessica Palmer, FARMS AND FOOD  
PROGRAM COORDINATOR

### Historic Preservation

Kristie Kendall, HISTORIC PRESERVATION MANAGER

### Outreach and Communications

Paula Combs, SENIOR EDITOR & PUBLIC RELATIONS  
Robin Cross, FELLOWSHIP COORDINATOR  
Watsun Randolph, SENIOR GIS ANALYST  
Marco Sánchez, COMMUNICATIONS COORDINATOR  
Bri West, DIRECTOR OF OUTREACH  
AND COMMUNICATIONS

### Information Systems and Technology

Tiffany Parker, DIRECTOR OF INFORMATION SYSTEMS

### Membership and Development

Danielle Castellano, DEVELOPMENT SPECIALIST  
Karissa Epley, SPECIAL EVENTS COORDINATOR  
Nan Moring, DIRECTOR OF DEVELOPMENT  
Douglas Stewart, DEVELOPMENT SPECIALIST

### Finance and Administration

Diana Gebhart, BOOKKEEPER  
Nancy Terseck, DIRECTOR OF  
FINANCE AND ADMINISTRATION

### Executive

John McCarthy, SENIOR ADVISOR &  
DIRECTOR OF STRATEGIC PARTNERSHIPS  
Chris Miller, PRESIDENT  
Diana Norris, IN-HOUSE COUNSEL  
Dawn Wilmot, EXECUTIVE ASSISTANT

## PEC Board of Directors

*This list includes Board members who served at any time between Jan 2017 and Jan 2018*

*\* Denotes 2017 Executive Committee member*

### Officers

CO-CHAIR  
George Ohrstrom, II

CO-CHAIR  
Jean Perin

VICE CHAIR  
Mark Ohrstrom

VICE CHAIR  
John H. "Jack" Snyder

SECRETARY  
Alton Keel

TREASURER  
David Aldrich

### Albemarle County

John H. Birdsall, III\*  
Mary Buford Hitz  
Chris McLean  
Patricia Prentiss  
Nora Seilheimer  
Peter Stoudt  
Loring Woodriff

### Clarke County

William J.O. Dunning  
Cleo Smart Gewirz  
Pam Lettie  
George Ohrstrom, II\*

### Culpeper County

Lili Alexander  
Margaret (Meg) Campbell  
Seth Heald\*  
Linda "Boo" Ingram\*

### Fauquier County

Mimi Abel Smith\*  
Brian Conboy\*  
Glenn Epstein  
George Grayson  
James Kleeblatt\*  
Mark Ohrstrom\*  
Jean Perin\*  
Margaret Milner Richardson\*  
Marie Ridder\*  
Lynn Wiley\*  
Virginia Wilson\*

### Greene County

Roy Dye\*  
Alton Keel\*  
George Overstreet

### Loudoun County

John Magee  
Bonnie Mattingly  
Bruce Smart  
David Williams

### Madison County

William von Raab\*

### Orange County

James Collins  
Frank Gillan  
John H. "Jack" Snyder\*

### Rappahannock County

David Aldrich\*  
Leslie Cockburn\*  
Helen DuBois  
Bruce Jones



# 2017 Financial Report

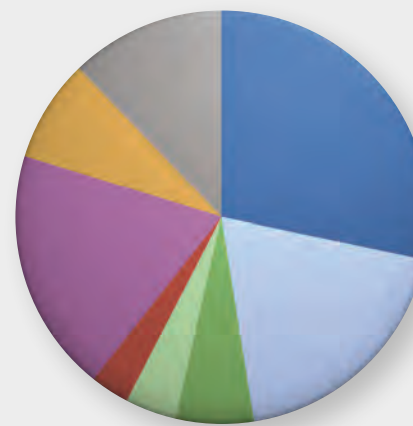
## Sources of Organizational Support



● Donations and Grants	\$ 3,475,311	94%
● Special Events, Net	151,627	4%
● Investments, Other	62,213	2%
Total	\$ 3,689,151	100%

The above figures do not include the activities of partner organizations for whom we acted as fiscal sponsor in 2017, including the Coalition for Smarter Growth, Shenandoah Valley Network and the EarthDay@Loudoun Family Festival. Copies of our audited financial statements and IRS forms 990, which include the aforementioned partner organizations, are available upon request. Copies of our most recent statements may also be found at PEC's website at [www.pecva.org/donate](http://www.pecva.org/donate). For more information, please contact PEC's accounting office at (540) 347-2334.

## Program and Operating Expenditures



● Conservation, Stewardship and Habitat	\$ 1,040,109	28%
● County Issues and Planning	707,510	19%
● Policy*	212,402	6%
● Farms and Food	130,179	4%
● Transportation and Growth Management	124,462	3%
● Outreach and Education	730,519	19%
● Development	365,394	10%
● Administration	457,240	12%
Total	\$ 3,767,815	100%

\* Policy reflects regional and state-level work on policy related to energy, air quality, water quality, telecommunications, land conservation and land use.









Post Office Box 460 • Warrenton, VA 20188

Non-Profit Org.  
U.S. Postage  
PAID  
PPCO

PEC FELLOWS TAKE IN A SUNRISE  
FROM SHENANDOAH NATIONAL PARK.  
*Photo by Abigail Chan*

### Headquarters Office

P.O. Box 460  
45 Horner Street  
Warrenton, VA 20188  
540.347.2334

### Charlottesville Office

410 East Water Street, Suite 700  
Charlottesville, VA 22902  
434.977.2033

### Orange Office

11395 Constitution Hwy  
Montpelier Station, VA 22957  
540.347.2334

Find contact information for  
PEC staff throughout our region  
at [www.pecva.org](http://www.pecva.org)

PRINTED BY Progress Printing, Lynchburg, VA  
DESIGNED BY Keith Damiani