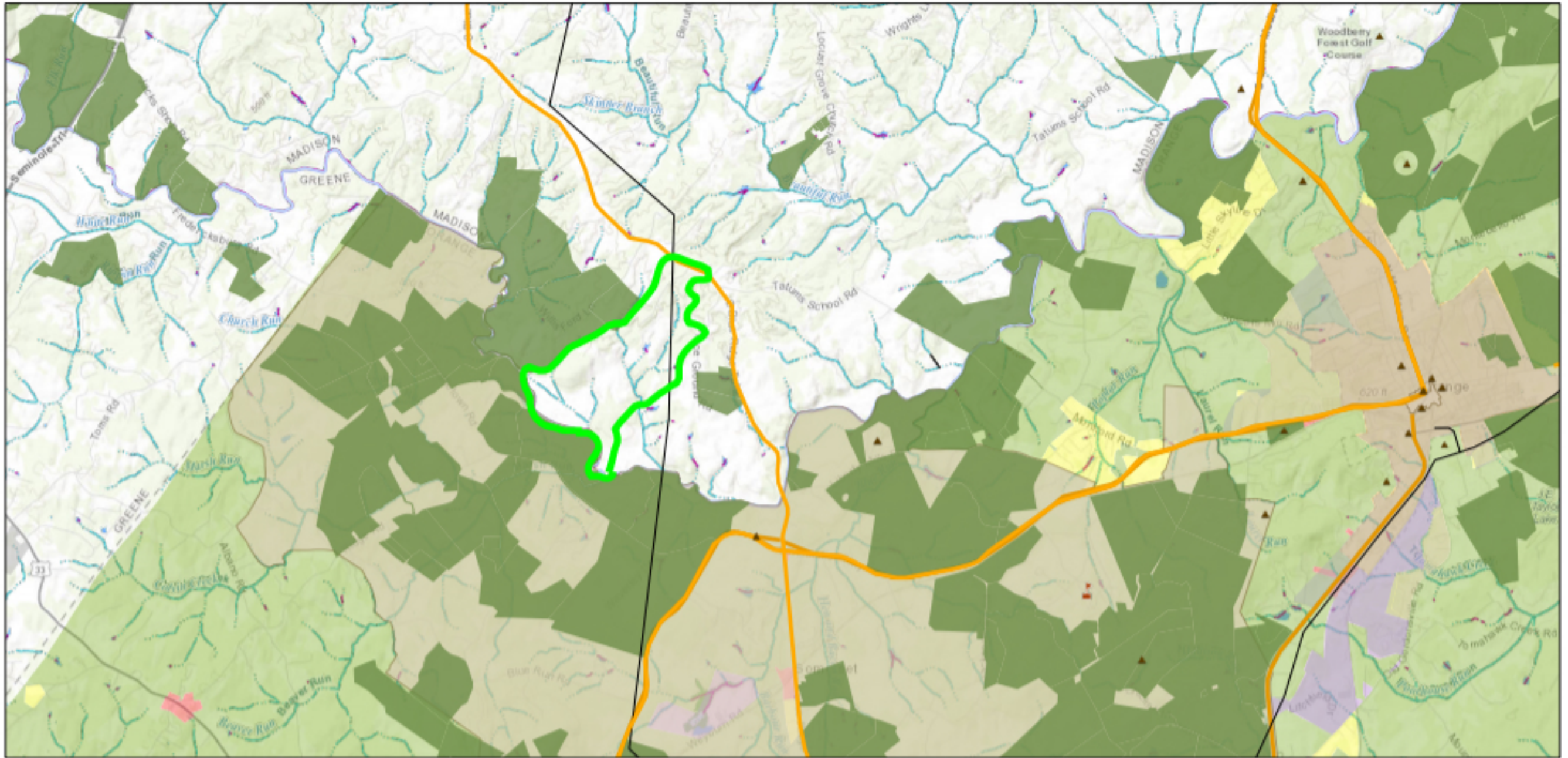
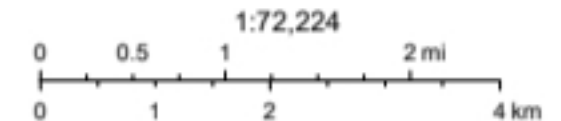


# Crescere Rural Resort and PEC Resources



6/5/2020, 8:44:38 AM

- |                               |                                    |                      |                                |                            |                   |                    |                             |
|-------------------------------|------------------------------------|----------------------|--------------------------------|----------------------------|-------------------|--------------------|-----------------------------|
| <b>Historic Sites</b>         | <b>Conservation Easements</b>      | <b>Zoning Orange</b> | <b>Waterbody - Large Scale</b> | <b>Area - Large Scale</b>  | <b>Flume</b>      | <b>SeaOcean</b>    | <b>Water Intake/Outflow</b> |
| ▲ National Historic Landmarks | ■ Conservation Easements           | ■ Rural              | ■ Estuary                      | ■ Area of Complex Channels | ■ Flume           | ■ SeaOcean         | ■ Water Intake/Outflow      |
| ▲ Registered Historic Sites   | ■ JTHG_Route                       | ■ Commercial         | ■ Ice Mass                     | ■ Area to be Submerged     | ■ Foreshore       | ■ Special Use Zone | ■ Flowline - Large Scale    |
| ▲ Registered Historic Sites   | ■ Historic Districts               | ■ Commercial         | ■ Lake/Pond                    | ■ Bay/Niét                 | ■ Hazard Zone     | ■ Spillway         | ■ Perennial                 |
| ■ Virginia Scenic Rivers      | ■ Potential                        | ■ Industrial         | ■ Playa                        | ■ Bridge                   | ■ Inundation Area | ■ Stream/River     | ■ Intermittent              |
| ■ Virginia Scenic Roads       | ■ Service Districts & Growth Areas | ■ Residential        | ■ Reservoir                    | ■ Canal/Ditch              | ■ Lock Chamber    | ■ Submerged Stream | ■ Ephemeral                 |
| — Transmission Lines          |                                    | ■ Residential        | ■ Swamp/Marsh                  | ■ Dam/Weir                 | ■ Rapids          | ■ Wash             | ■ Artificial Path           |
| ■ PEC Region                  |                                    | ■ Mixed              |                                |                            |                   |                    | ■ Canal Ditch               |



Sources: Esri, HERE, Garmin, Intermap, increment P Corp., GEBCO, USGS, FAO, NPS, NRCAN, GeoBase, IGN, Kadaster NL, Ordnance Survey, Esri Japan, METI, Esri China (Hong Kong), (c) OpenStreetMap contributors, and the GIS User Community, USGS