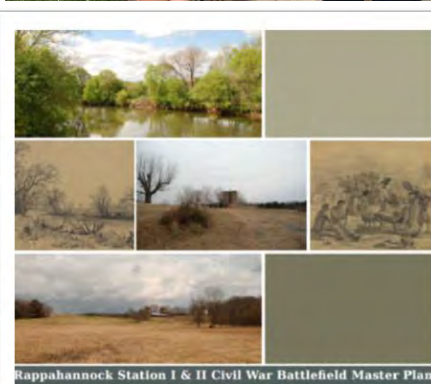




Project Goals

1. Gather community input on issues and priorities related to **walkability, parks, trails** and **active living**.
2. Create a vision for a **connected network** of parks, trails and sidewalks.
3. Position the community to support the development and **implementation of that vision**.
4. Identify who will take ownership for **implementation and maintenance**.
5. Improve **safety** for pedestrians, bicycle riders and drivers.
6. Improve **river access**. Encourage respect and appreciation for the river.
7. Create more places for Remington residents to **play, connect and hang out** together.

What we've done so far...



Rappahannock Station I & II Civil War Battlefield Master Plan



Parks and Recreation Board Draft
Fauquier County Parks and Recreation Department
and Department of Community Development

September 2012





AMERICA IN 2015

A ULI Survey of Views on Housing, Transportation, and Community

52%

of Americans would like to live in a place where they do not need to use a car very often.



**Urban Land
Institute**

Building Healthy
Places Initiative



**Urban Land
Institute**

Terwilliger Center for Housing

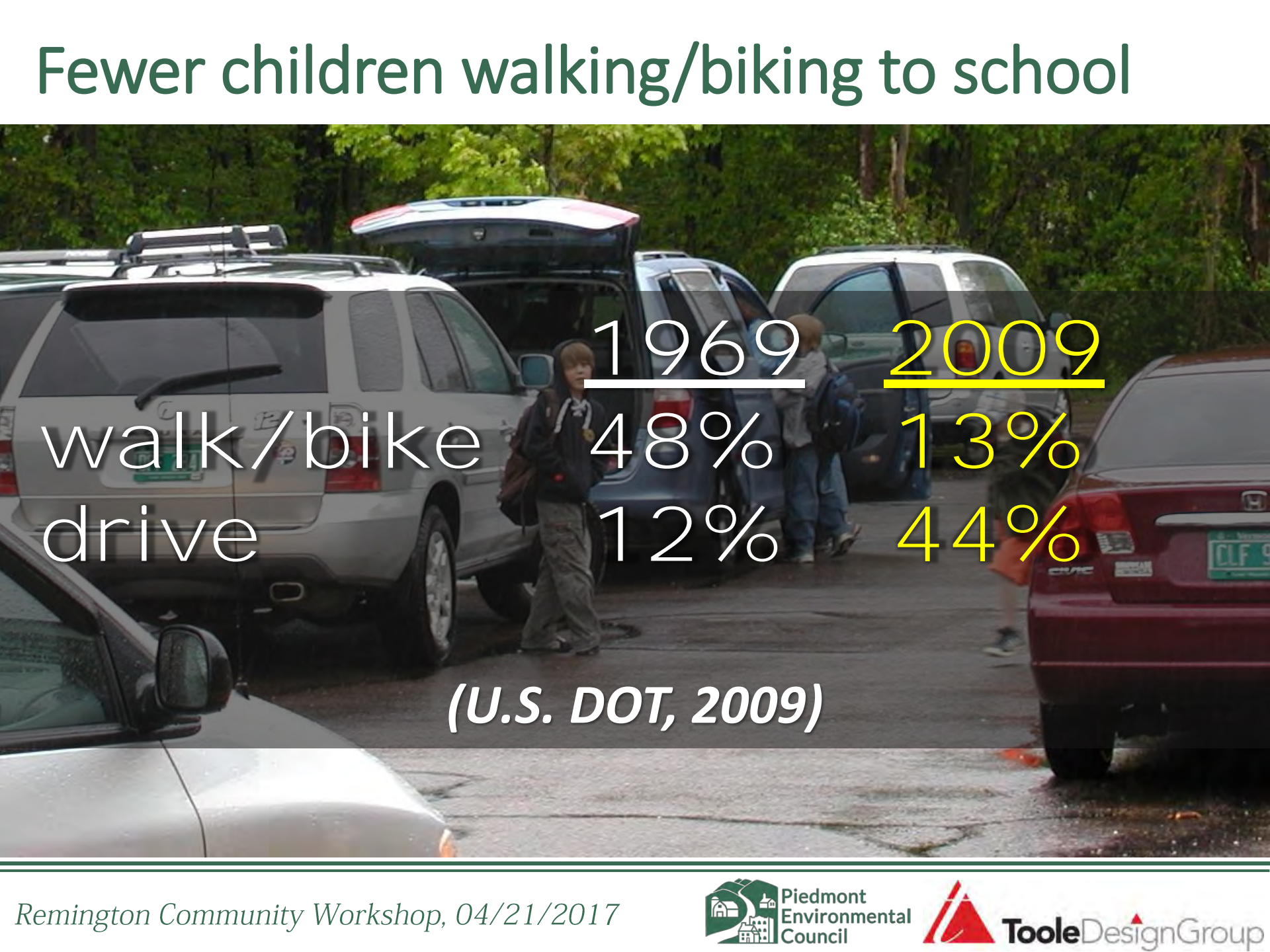


**Piedmont
Environmental
Council**



TooleDesignGroup

Fewer children walking/biking to school

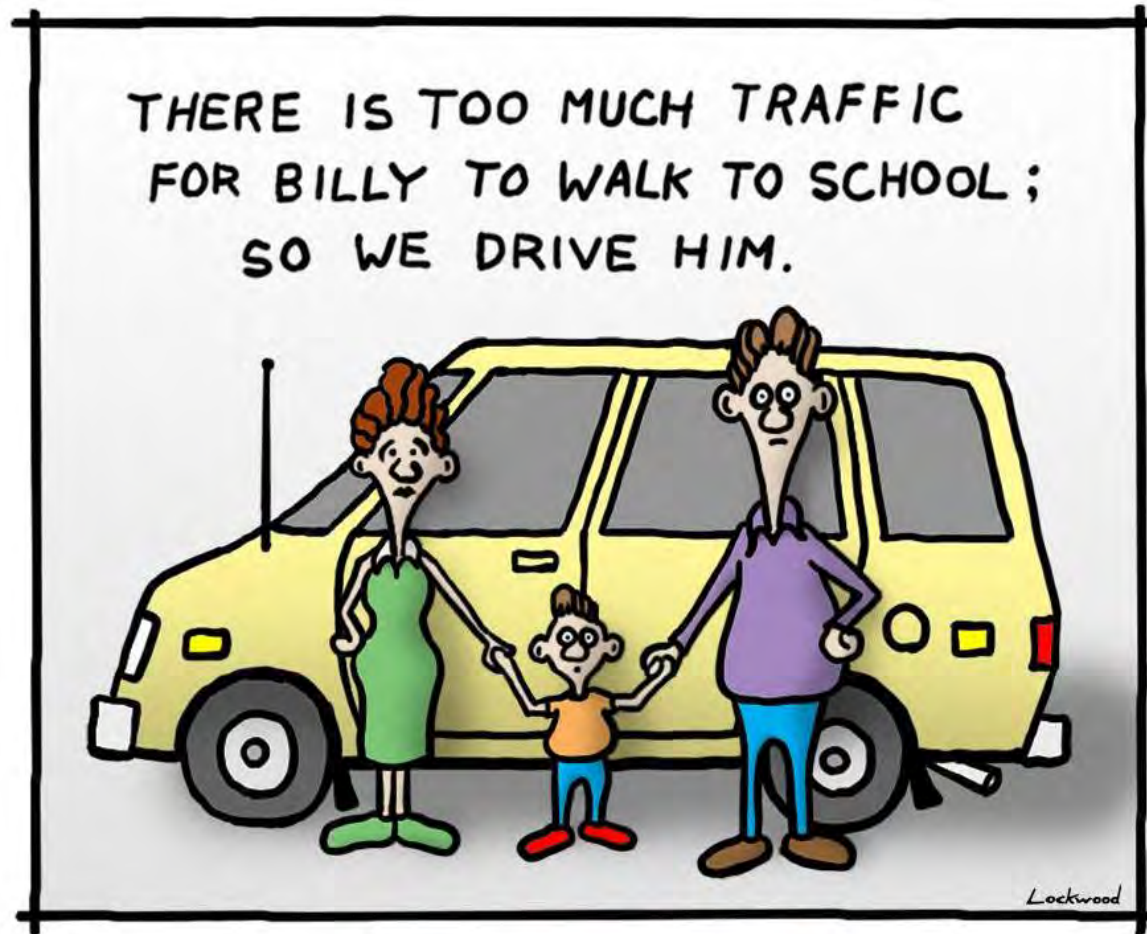


A photograph of a school parking lot with several cars parked. In the foreground, a silver SUV has its rear hatch open. A child with a backpack is standing near the open hatch. Another child is visible further back near a blue car. A red car is partially visible on the right. The background shows green trees.

	<u>1969</u>	<u>2009</u>
walk/bike	48%	13%
drive	12%	44%

(U.S. DOT, 2009)

Traffic Inducing Traffic



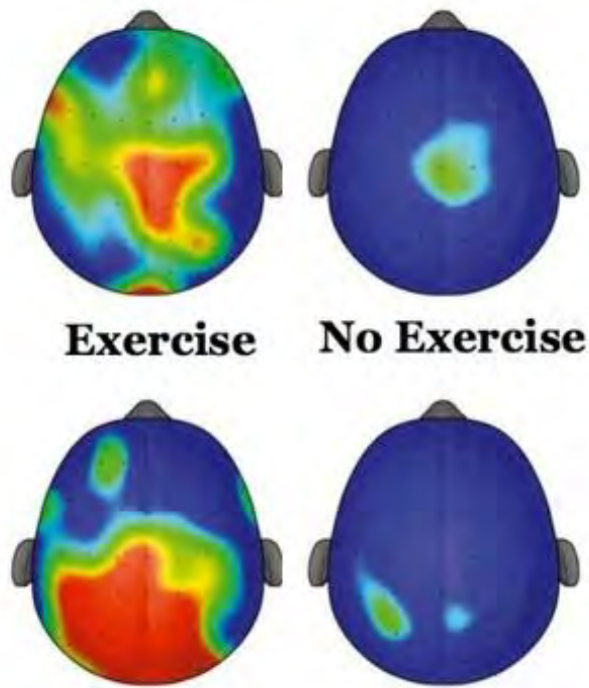
Children's Health:

Schools near major roads have higher incidence and severity of health issues



Children's Health: Exercise is ADHD Medication

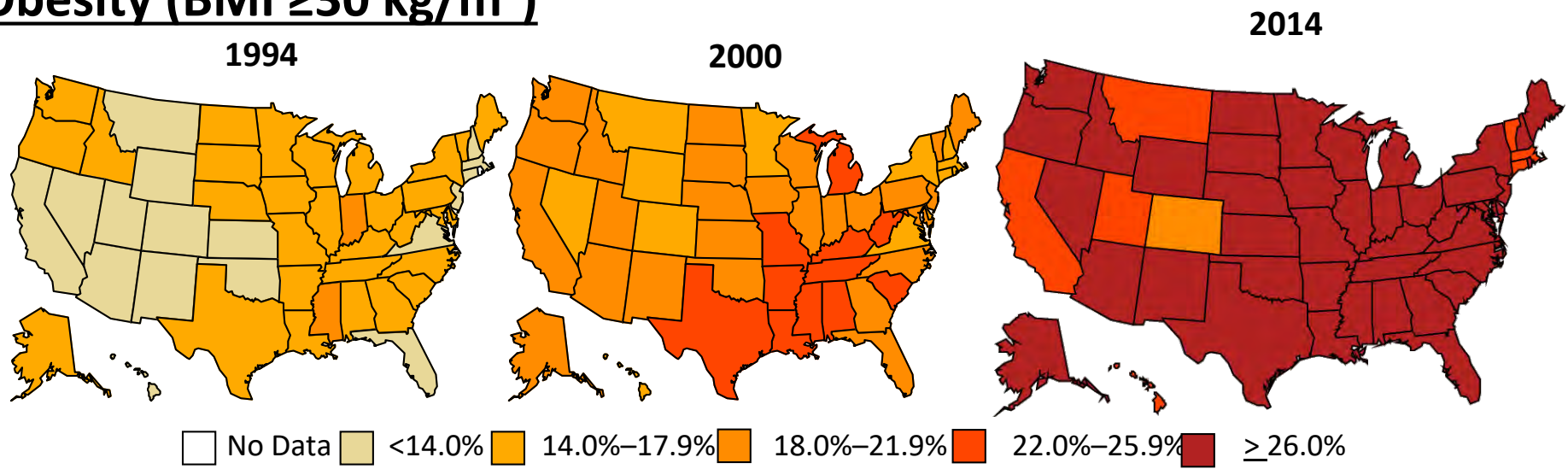
Physical movement improves mental focus, memory, and cognitive flexibility; new research shows just how critical it is to academic performance.



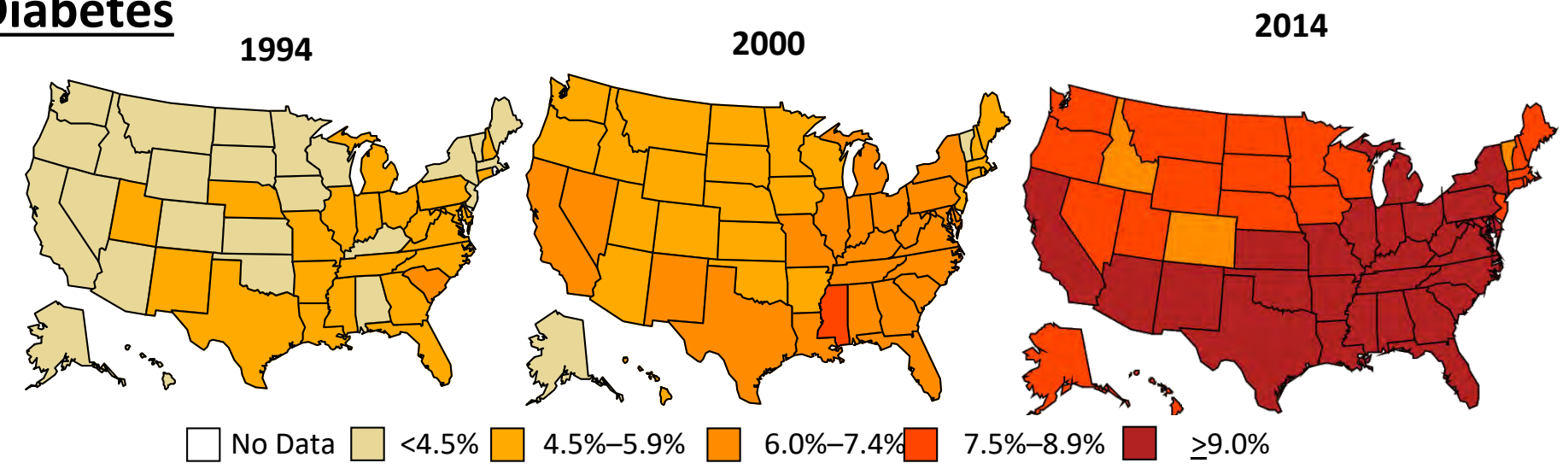
Source: The Atlantic / Pediatrics Medical Journal

Our Health

Obesity (BMI ≥ 30 kg/m²)



Diabetes



Driving and Quality of Life

- Increased neck and back problems
- More likely to feel tired/ anxious
- 40% increase in divorce when commute > 45 minutes
- Commute length stronger correlation to obesity than any other factor
- Each 10 minutes of commute reduces social connections by 10%



Source: Bowling Alone: The Collapse and Revival of American Community, Robert Putnam, 2000

3,724,933 traffic fatalities (1899-2016)



Data Source: [NHTSA.dot.gov](https://www.nhtsa.gov) & National Safety Council

Highway crashes **cost Americans \$242 billion annually**, including the cost of medical bills, lost wages, legal fees, auto repairs and delays

Data Source: National Highway Transportation Safety Administration (NHTSA)

More walkable places **perform better economically.**

- + Attract and retain businesses, employees and residents.
- + Attract and retain a younger workforce.
- + Encourage tourism, shopping visits, and casual restaurant patrons.



“Where do you want to go to dinner, honey?”

Principles of Walkability

- 1) Comfortable
- 2) Engaging
- 3) Accessible
- 4) Convenient
- 5) Connected
- 6) Vibrant
- 7) Safe
- 8) Legible



Ideas for Remington

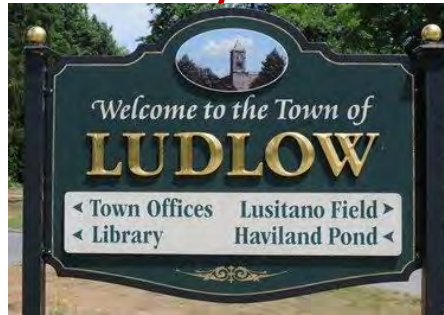


Gateway

Transition Zones

Town Center

Gateway



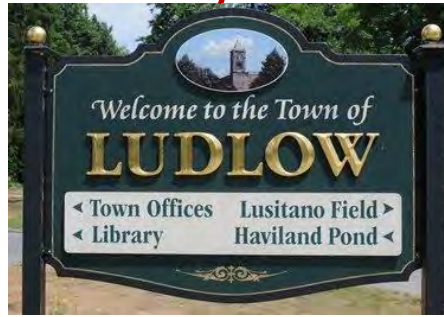
Transition Zones

Town Center





Gateway



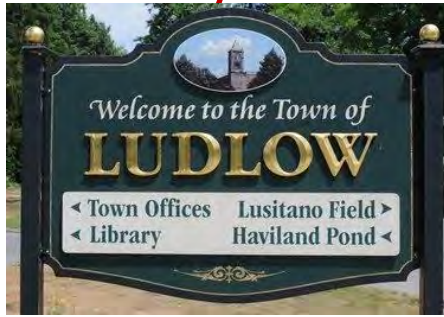
Transition Zones



Town Center



Gateway



Transition Zones



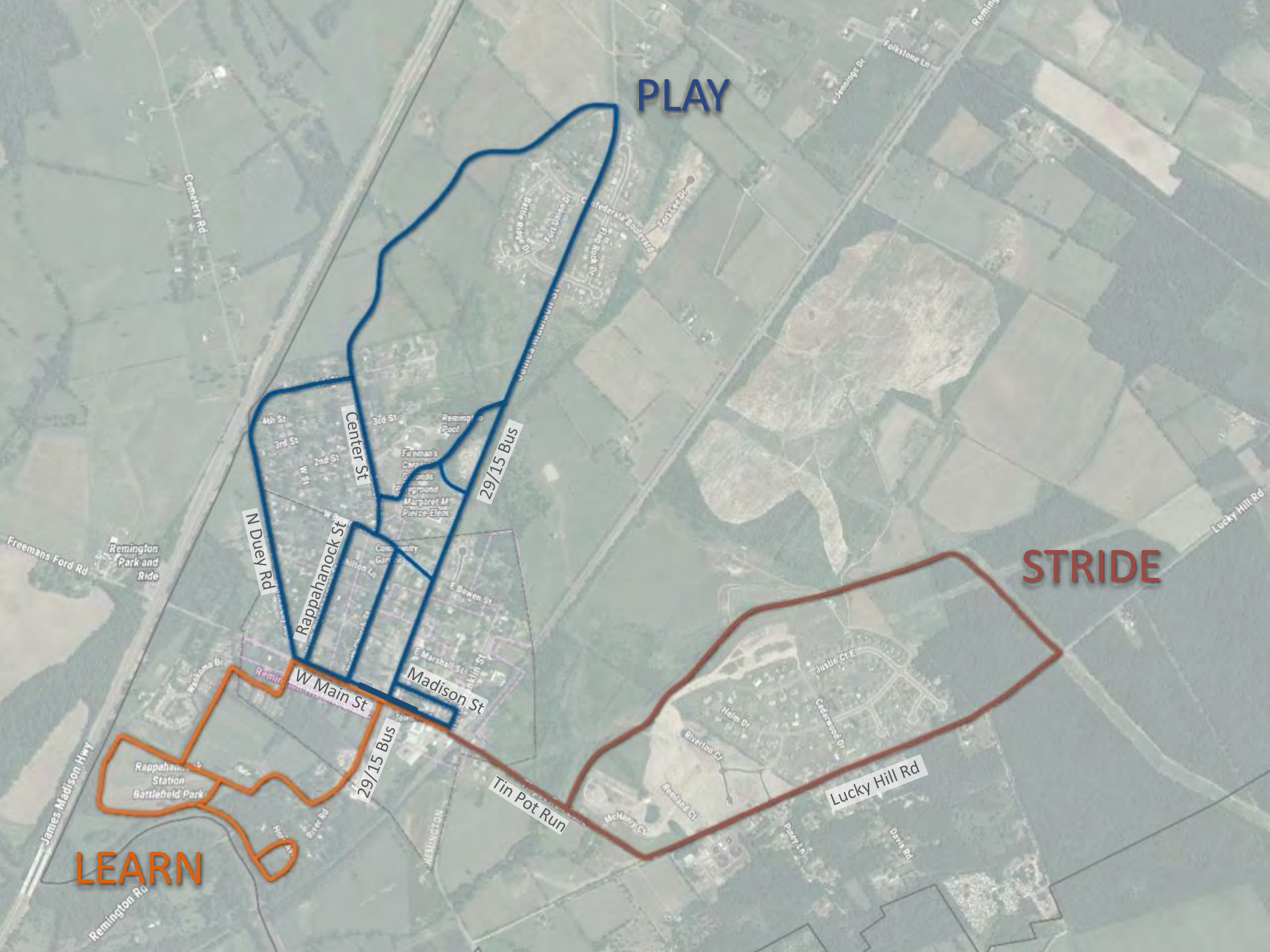
Town Center

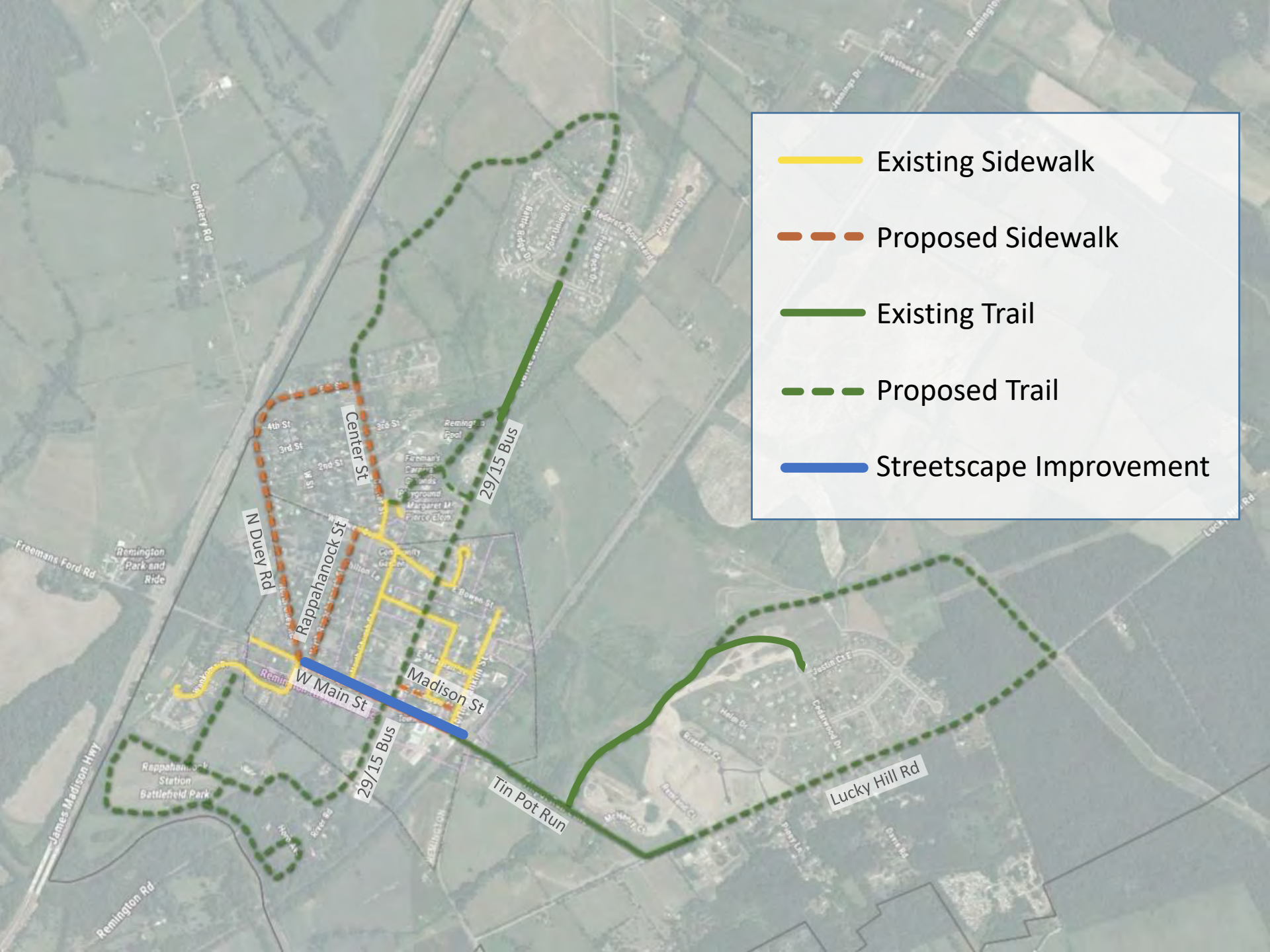


PLAY

STRIDE

LEARN

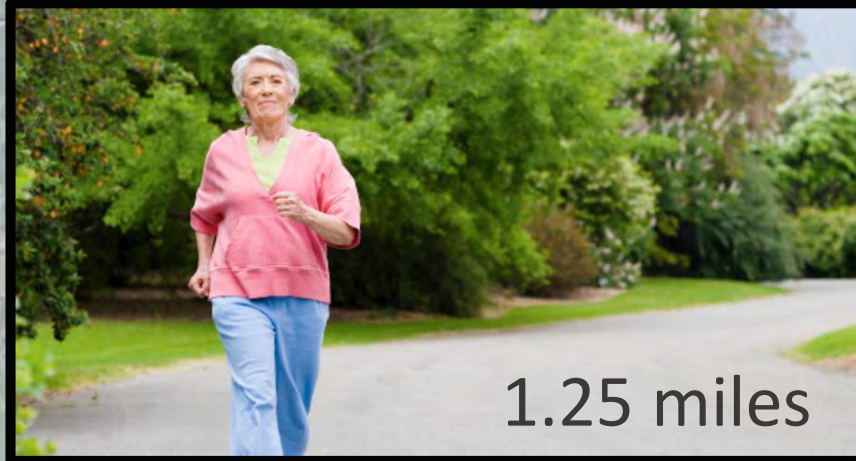




- Existing Sidewalk
- Proposed Sidewalk
- Existing Trail
- Proposed Trail
- Streetscape Improvement

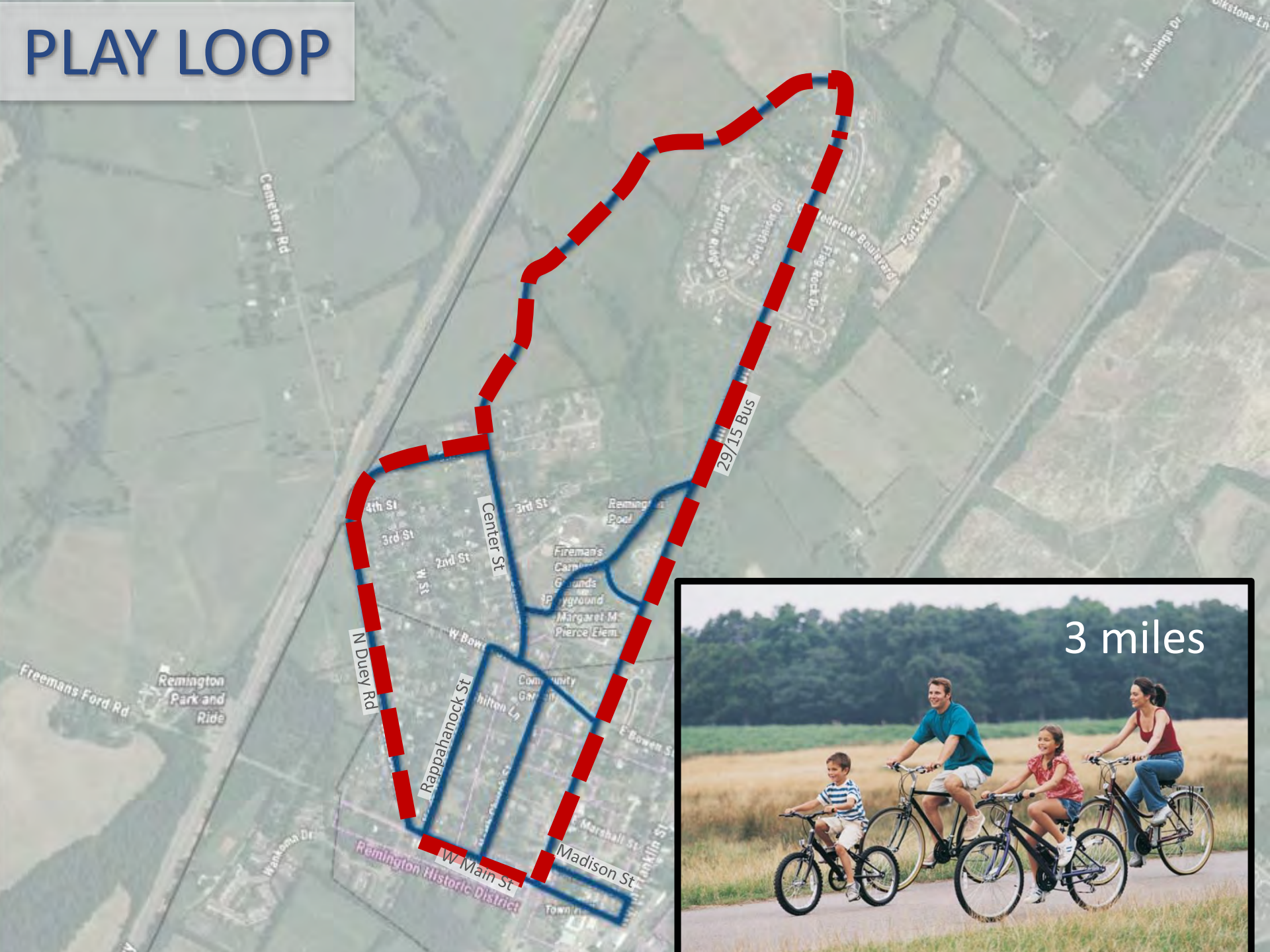
[illegible]

PLAY LOOP



1.25 miles

PLAY LOOP

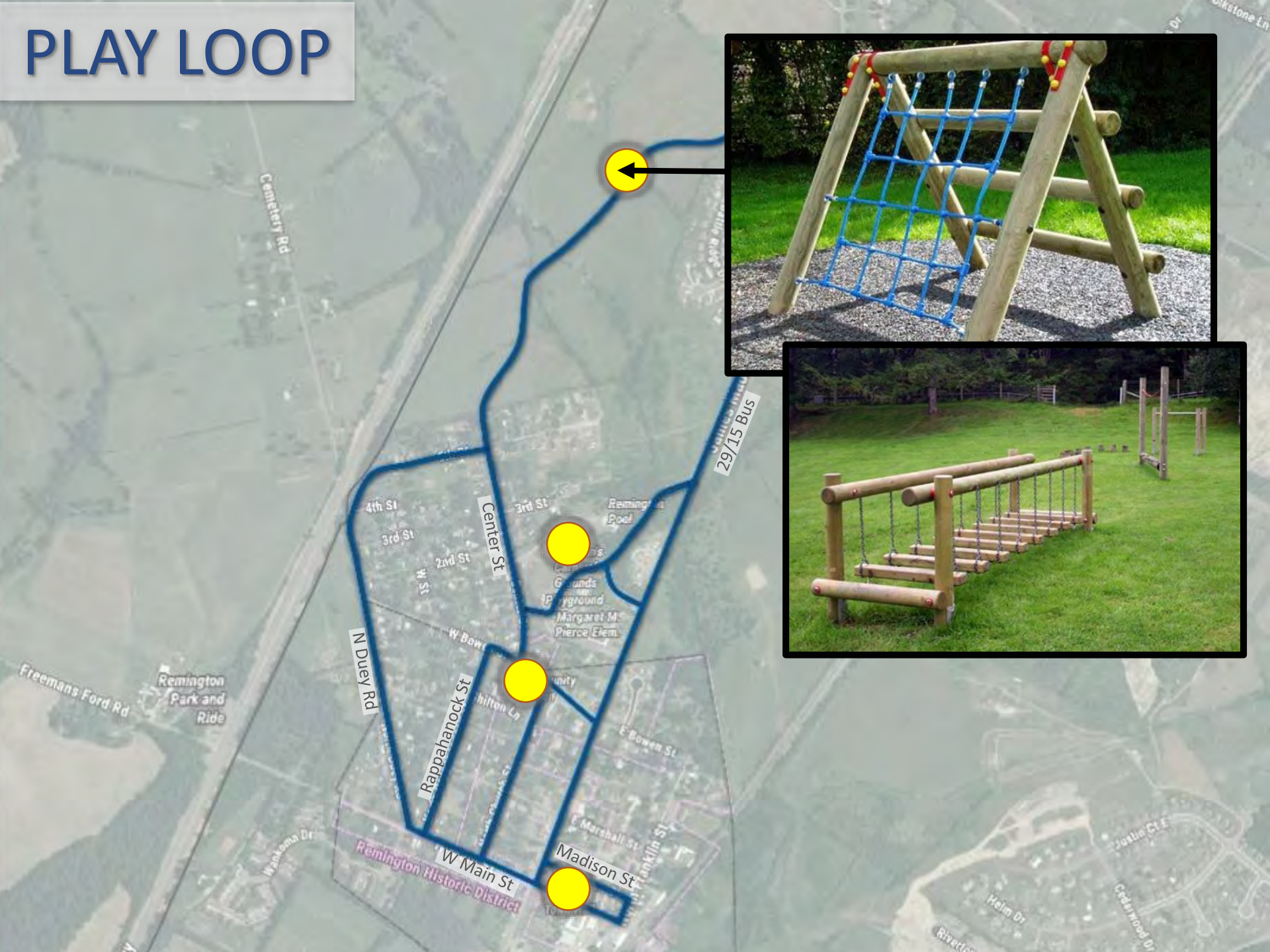


PLAY LOOP



.6 miles

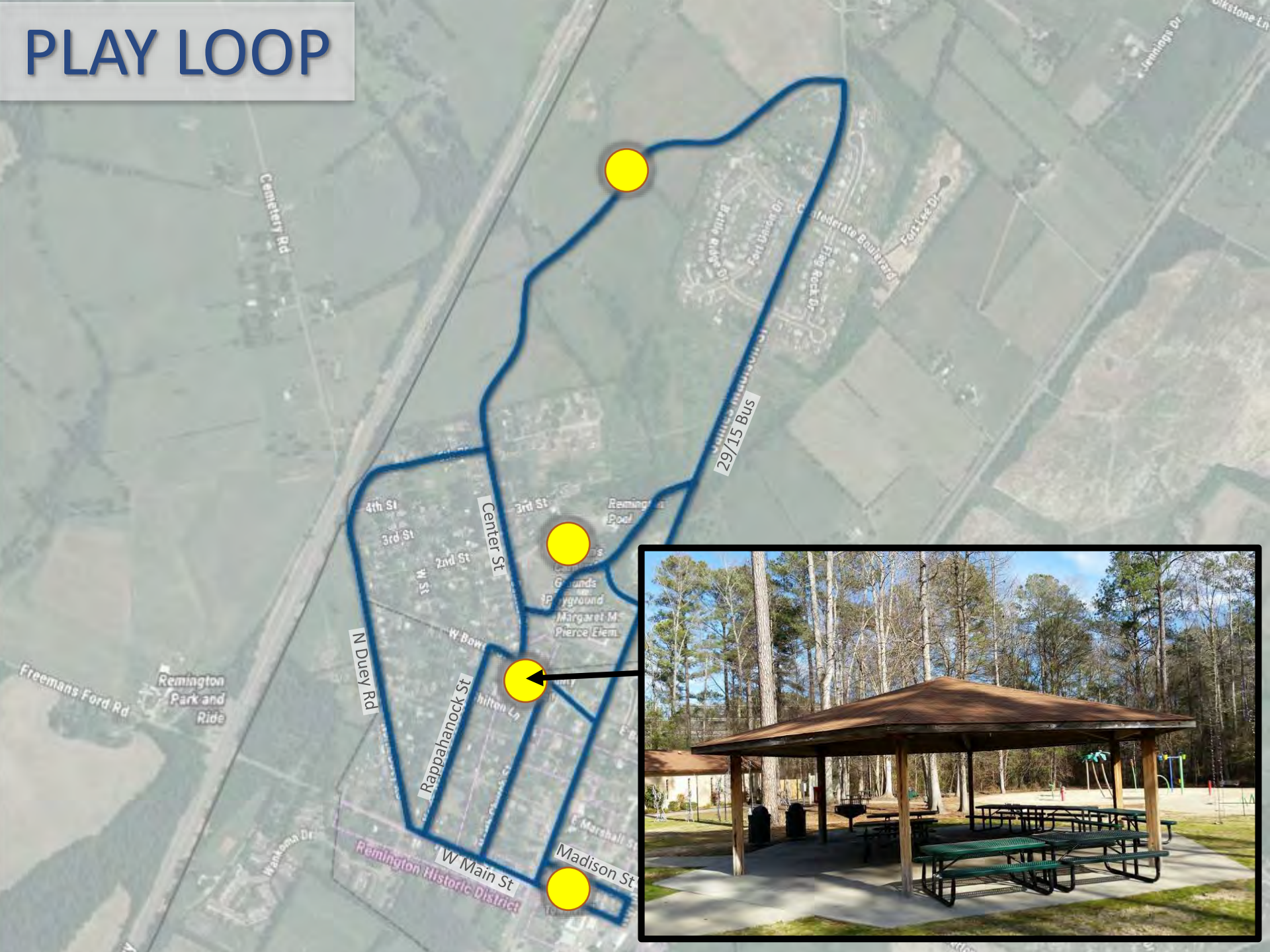
PLAY LOOP



PLAY LOOP

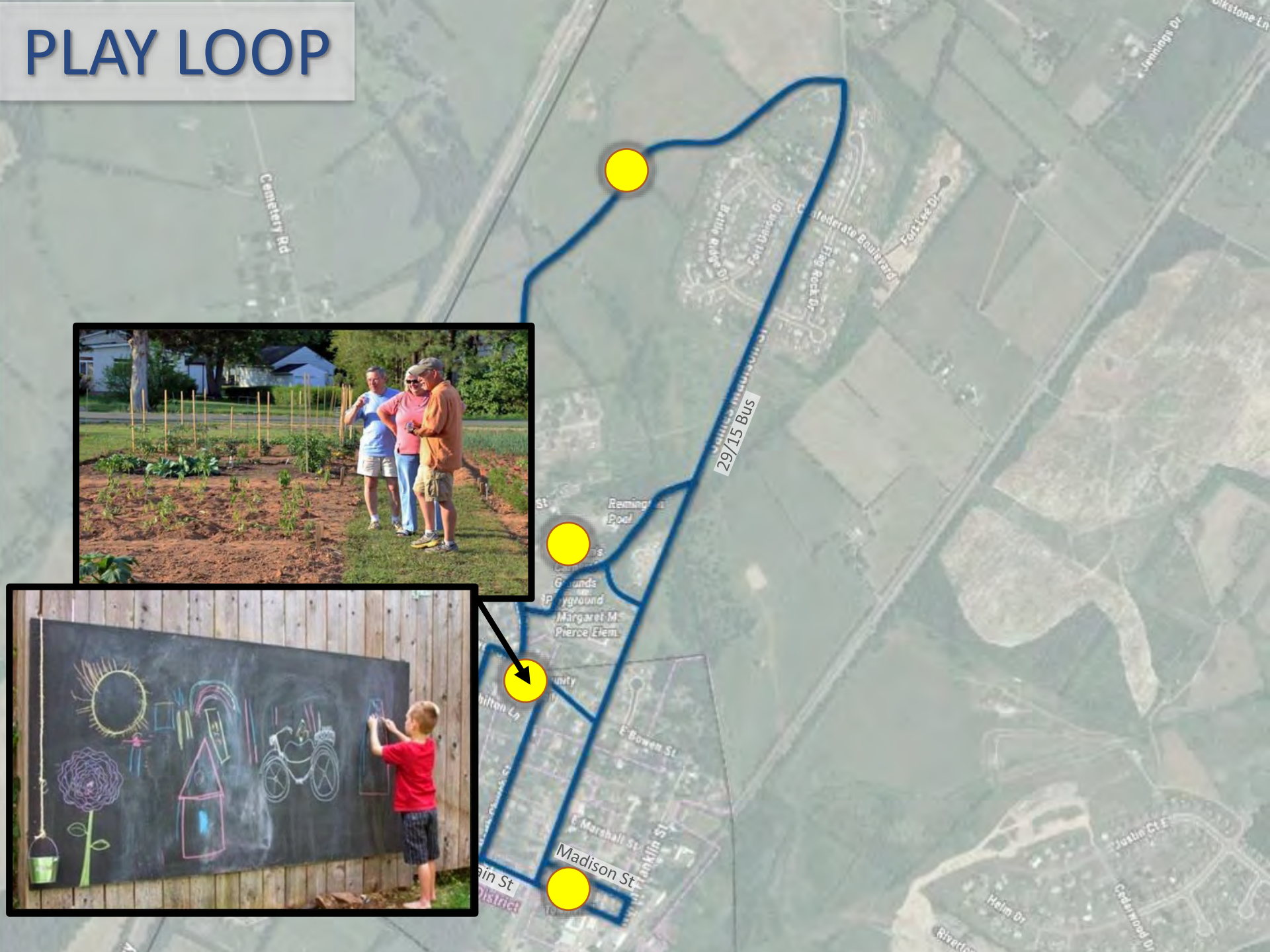
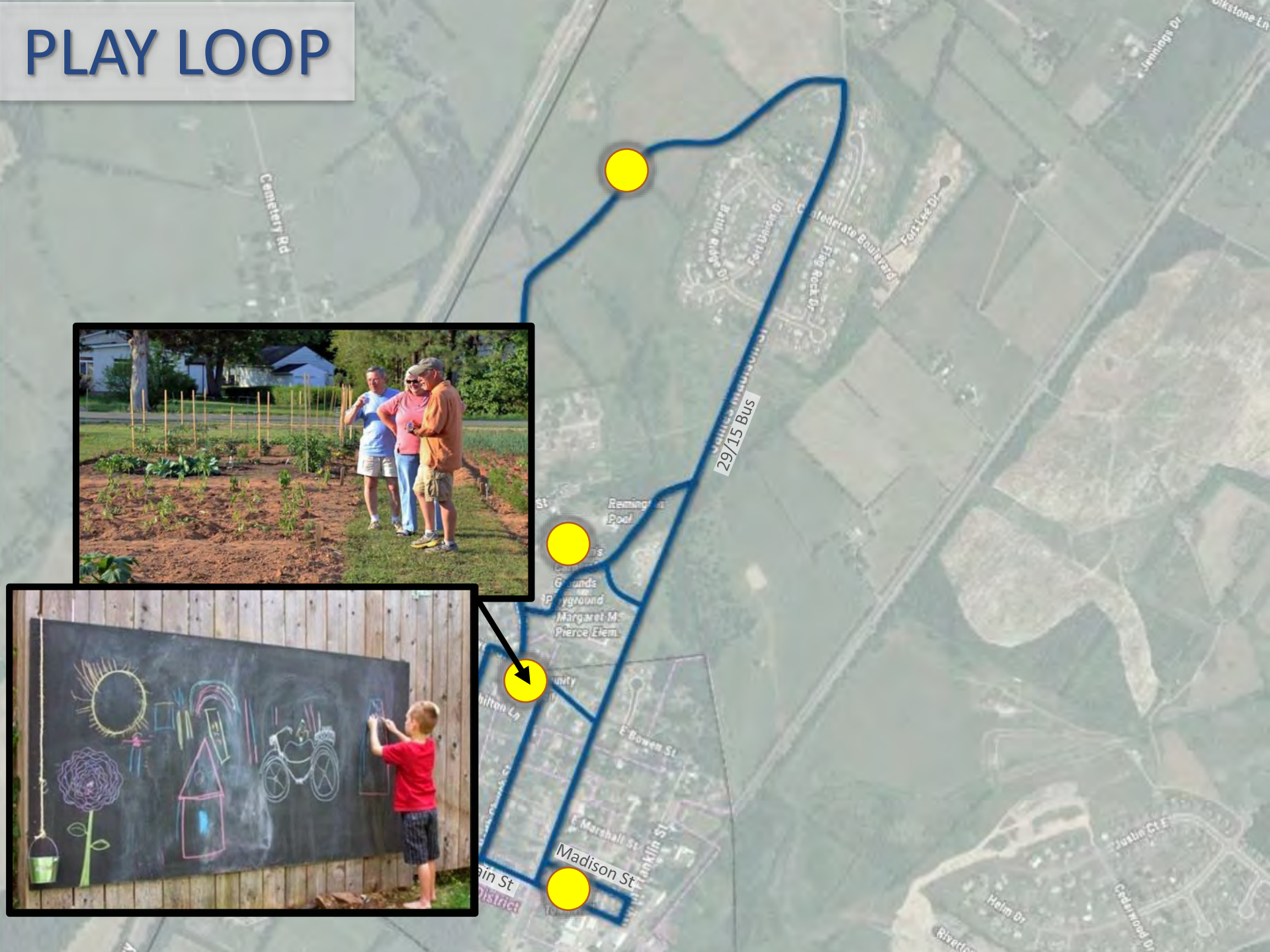


PLAY LOOP



PLAY LOOP

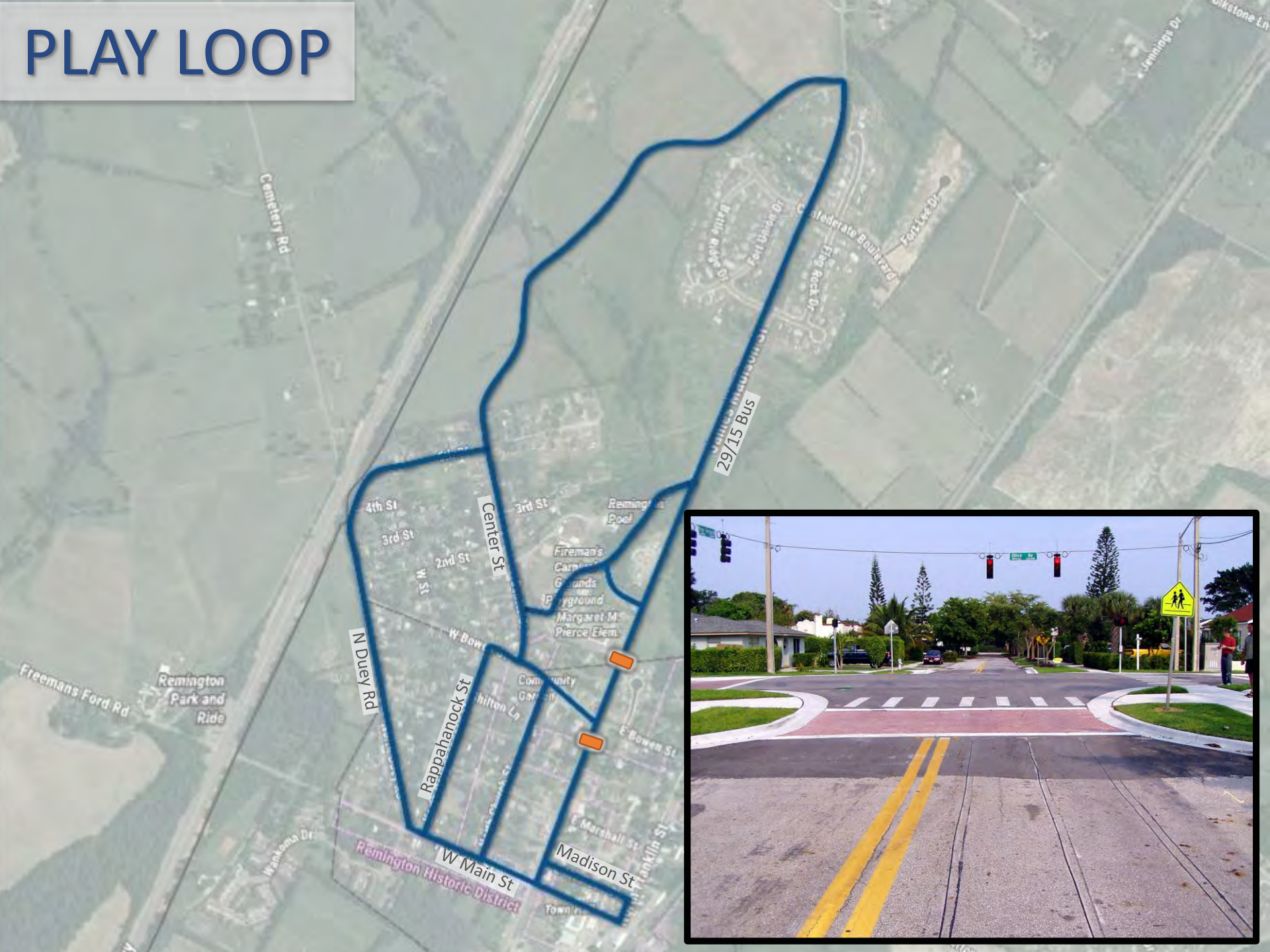
The image is a composite featuring an aerial map of a neighborhood with a blue line tracing a path labeled "29/15 Bus". Three yellow dots are placed along this path. The map includes labels for various streets: Cemetery Rd, Fort Lee Dr, Confederate Boulevard, Fort Lee Dr, Remington Pool, Margaret M. Pierce Elem, E Bowen St, E Marshall St, and Madison St. Two inset photographs are included: one showing three people in a garden and another showing a child drawing on a chalkboard. A black arrow points from the chalkboard inset to a yellow dot on the map.



PLAY LOOP



PLAY LOOP



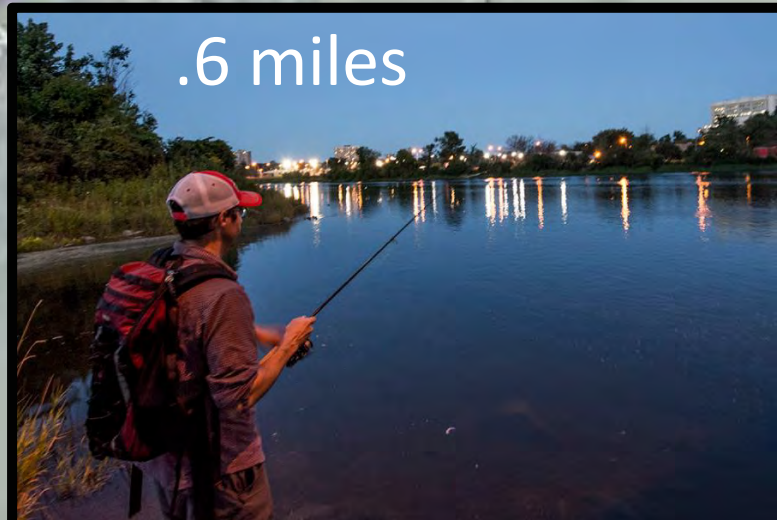
LEARN LOOP



LEARN LOOP



.6 miles



LEARN LOOP



1.5 miles

LEARN LOOP



LEARN LOOP

The image is a composite illustrating a 'Learn Loop' in the Remington Historic District. The main map shows an orange loop route with five yellow circular markers indicating stops. The stops are located at: 1. W Main St (near North Church St), 2. E Marshall St (near North Church St), 3. E Bowen St (near North Church St), 4. E Franklin St (near North Church St), and 5. E Madison Hwy (near Remington Rd). An inset image in the top left shows a historical photograph of a plantation with the caption 'Julian W. Smith's Slave Cabin'. Another inset image in the bottom right shows a modern informational sign at a park with the text 'PROMOTES WELLNESS'.



STRIDE LOOP



Carnival
Grounds
Playground
Margaret M.
Pierce Elem.

Community
Garden

E Bowen St

E Marshall St

E Madison St

Town Hall

North Franklin St

Helm Dr

Riverton Ct

Remland Ct

McHenry Ct

Justin Ct E

Cedarwood Dr

Lucky Hill Dr

Tin Pot Run

HELMINGTON

Piney Ln

Davis Rd

Key Ridge Rd

Strodes Mill Rd

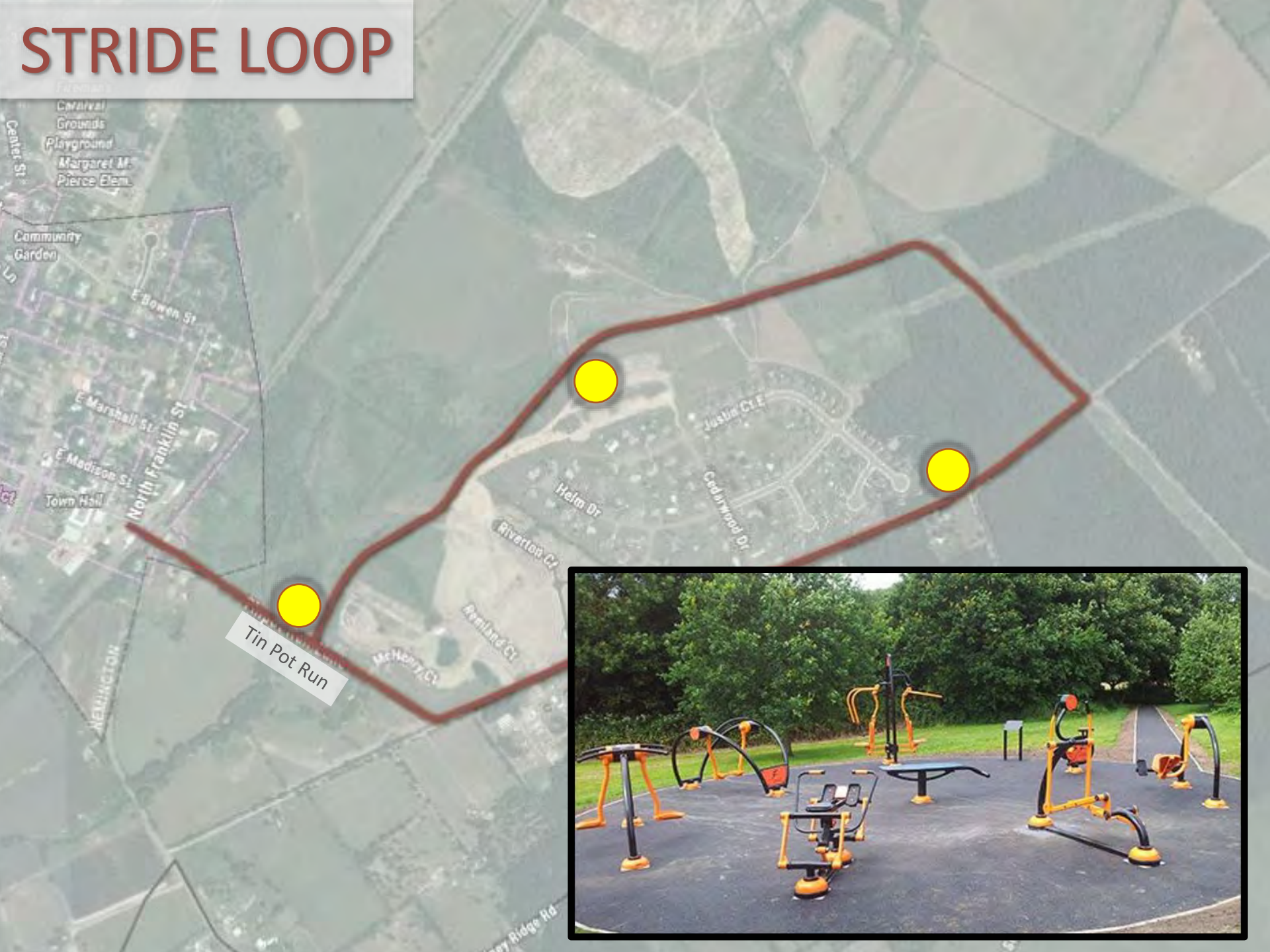
[illegible]

STRIDE LOOP



2.75 miles

STRIDE LOOP



Tin Pot Run



STRIDE LOOP



Town Center





Main Street Standing Near the RR Tracks Looking West





EXISTING

15/29 Bus Near E Madison St. Looking South



POTENTIAL FUTURE

15/29 Bus Near E Madison St. Looking South

Main Street



EXISTING

Near Town Hall Facing East

Main Street



POTENTIAL FUTURE
Near Town Hall Facing East



New Town Hall



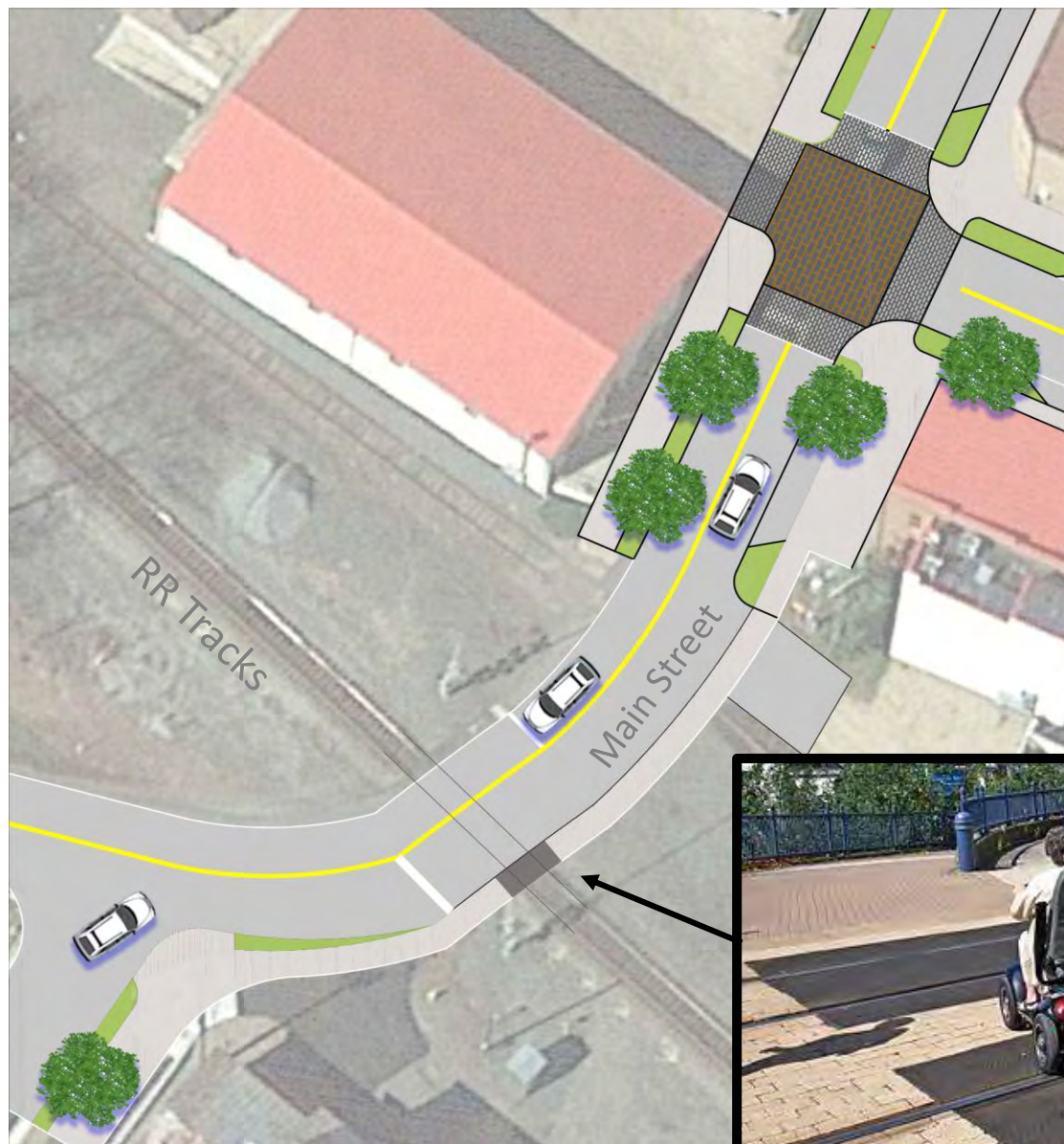
EXISTING

Main Street Standing Near the RR Tracks Looking West



POTENTIAL FUTURE

Main Street Standing Near the RR Tracks Looking West



Funding and Maintenance

- County, VDOT and Town central, but community leaders will also be key
 - Friends of the trail group?
- Federal, State & Foundation Grants
 - Journey through Hallowed Ground?
 - Kaboom Playground?
- Fund small improvements; Implement in stages

Thank you!

Discussion & Questions