



Piedmont
Environmental
Council

ANNUAL REPORT · 2021

Dear Friends,

On a rainy October weekend last year, we joined almost 100 volunteers to plant more than 700 trees along the headwaters of Goose Creek at Sky Meadows State Park. It was one of countless plantings in recent years in the Goose Creek and upper Rappahannock watersheds, and it got us thinking about trees and forests and the importance of connecting those dots.



STAFF AND VOLUNTEERS FROM PEC AND GOOSE CREEK
ASSOCIATION AT A SKY MEADOWS TREE PLANTING.
Photo by Sophia Chapin

As these trees grow and form an interconnected canopy, their impacts are multiplied. They help retain precipitation, replenish our aquifers and support clean drinking water. They also provide patches and pathways of habitat for wildlife. Much like these trees that will grow into forests, The Piedmont Environmental Council is a mosaic of programs and activities that, individually and combined, all contribute to better communities and an increasingly conserved and restored landscape.

In 2021, Piedmont landowners conserved 55 properties totaling 6,474

acres, bringing the total amount of conserved private lands in our region to 433,131 acres. All told, 25 percent of the land in our region is now permanently protected. Building on this foundation of conserved private and public lands, PEC has broadened our collaborations with community leaders and groups to connect communities and tell the often complicated histories of this special place. A good example is our support for the years-long efforts of The Freedom Foundation of Virginia that culminated in the establishment of the Maddensville Historic Site in Culpeper.

Local groups also came together to create long-awaited new public access to the Rappahannock River, with three new boat launches opening in Fauquier County last year. Meanwhile,

more than 750 people volunteered to grow, harvest and pack fruits and vegetables at PEC's Community Farm at Roundabout Meadows for food-insecure residents in Loudoun County.

Despite all the adversity of the past two years, thousands of Piedmont residents have stepped up in so many different ways — from speaking out at local government meetings to planting native trees and installing solar panels on their roofs. PEC exists to support, motivate and knit together this tapestry of individual and collective efforts to make this place we love even better. As we move into 2022, our 50th year, we take pause to reflect on the past and rededicate ourselves to our collective vision of the future. Thank you for your love of the Piedmont, your involvement in our efforts and your support.

Sincerely,



Chris Miller
President



Jean Perin
Co-Chair, Board of Directors



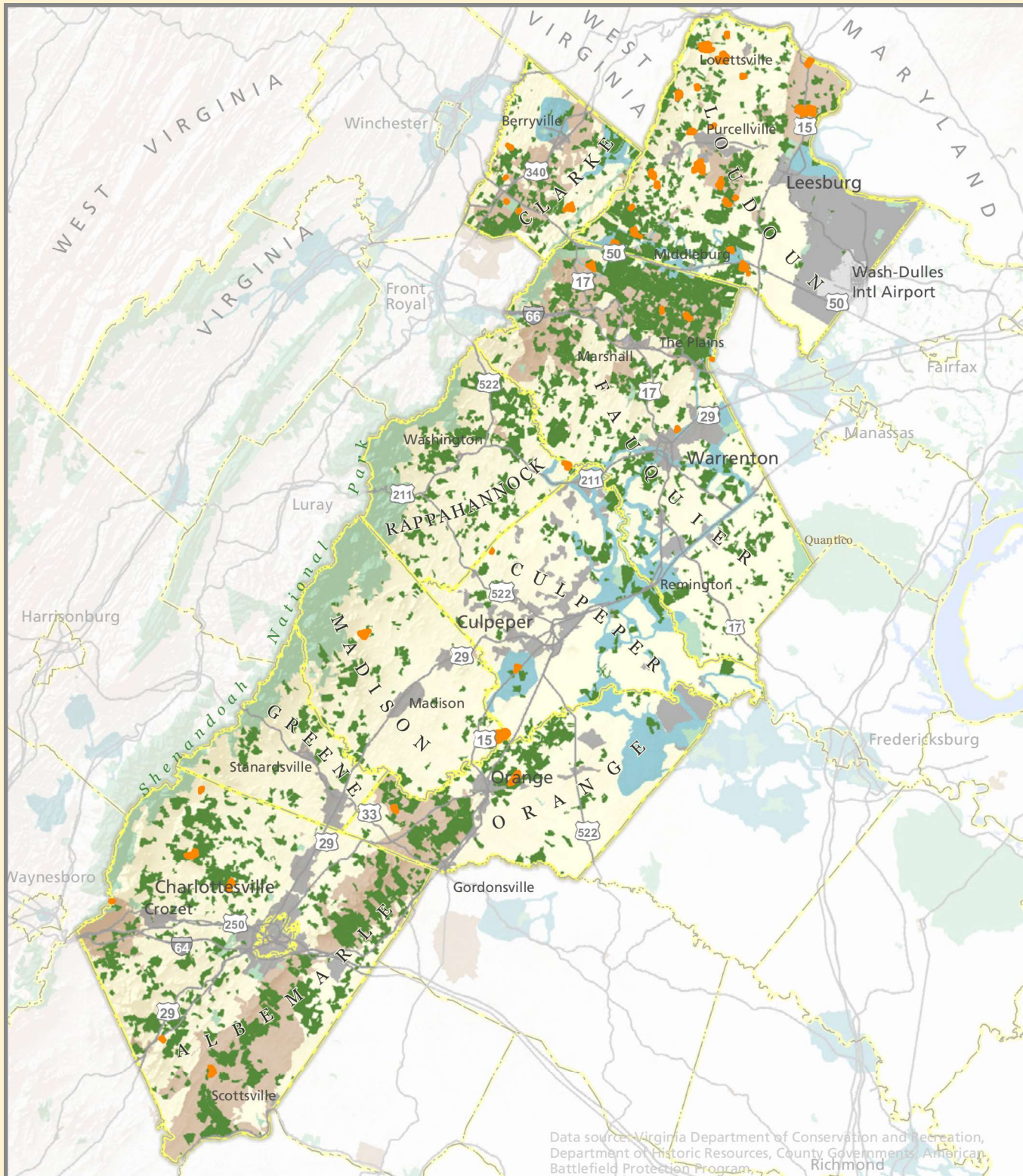
George L. Ohrstrom, II
Co-Chair, Board of Directors



SUNSET OVER THE RAPIDAN RIVER.
Photo by Hugh Kenny

contents

MAPS OF THE PIEDMONT	2
land conservation	4
strong rural economies	6
history and beauty	8
better communities	10
clean water	12
habitat restoration	14
energy, transportation, and climate	16
THE PIEDMONT FOUNDATION	18
CONTRIBUTIONS	19
Welcome to St.Bride's Farm	21
Legacy Gifts	24
BOARD OF DIRECTORS AND STAFF	29
IN MEMORY	30
STATEMENTS OF FINANCIAL CONDITION	32



Data source: Virginia Department of Conservation and Recreation,
Department of Historic Resources, County Governments, American
Battlefield Protection Program, Richmond

Conservation and Preservation

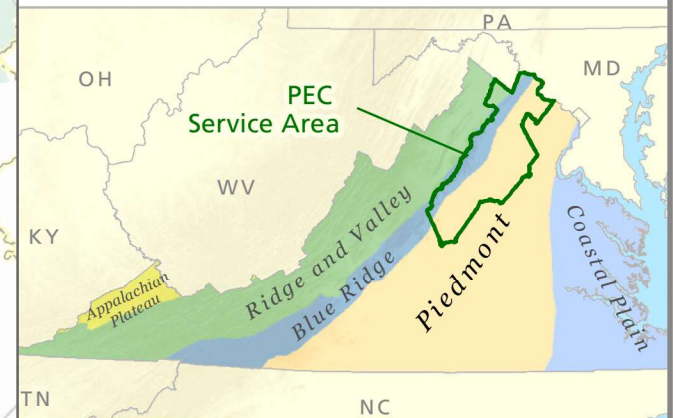
-  Easements Recorded in 2021
-  Conservation Easements
-  Publicly Owned Lands
-  Civil War Battlefields
-  Historic Districts
-  Areas Designated for Development

0 10 20
Miles




PEC's nine-county service area has more than 433,000 acres of Virginia's privately conserved land, protecting natural, cultural, historic and scenic resources including 205,000 acres of prime farm soils, 165,000 acres of historic districts and battlefields, and 114,000 acres along Scenic Byways.

Physiographic Regions of Virginia



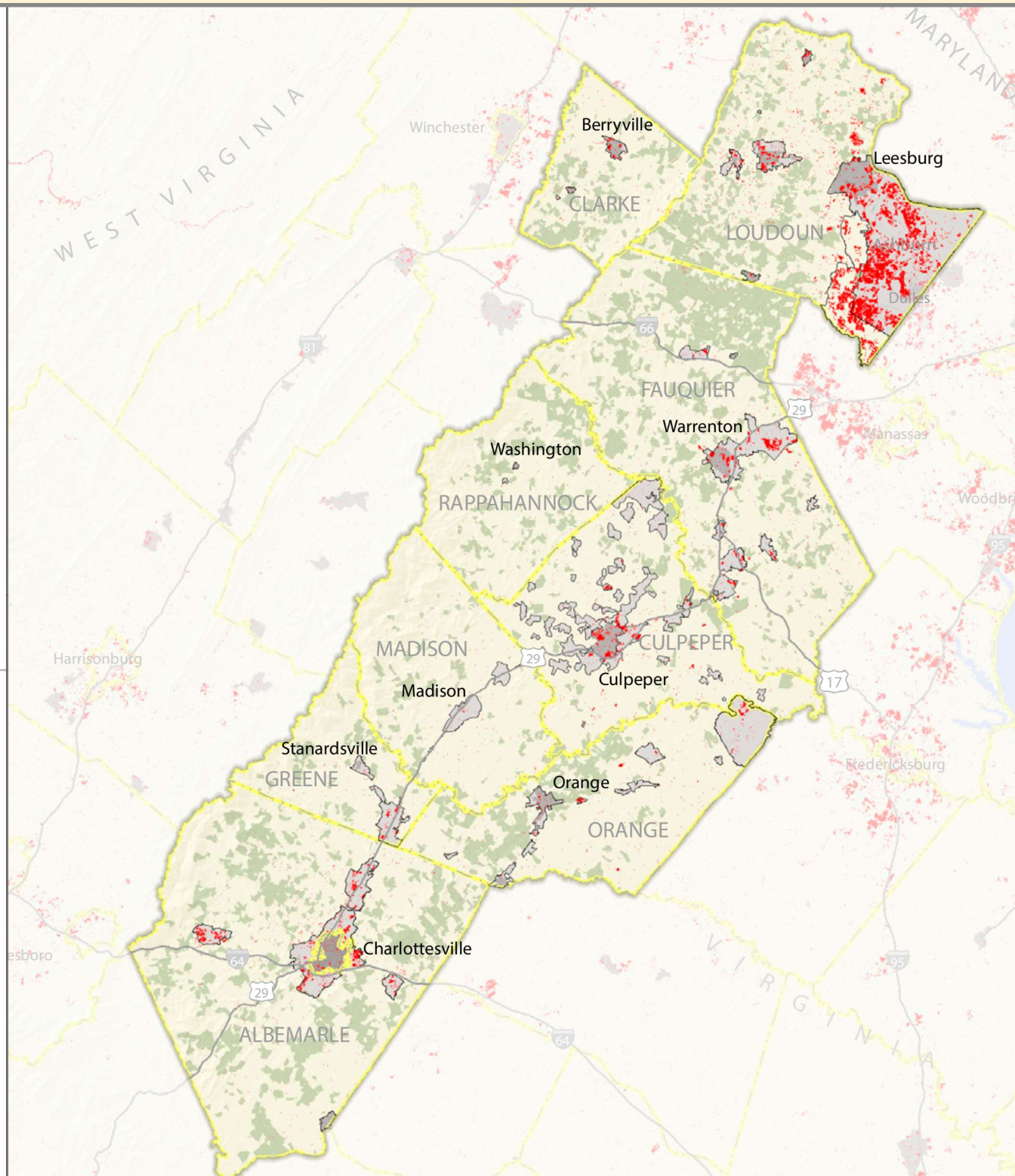
Growth and Development

-  Developed Land 2001-2019
-  Areas Designated for Development
-  Loudoun Transition Area
-  Conservation Easements
-  Cities and Towns

0 10 20
Miles



In the Piedmont, development is largely contained within the growth areas designated by each locality. This dataset from the National Land Cover Database shows land that has been converted to urban from a prior land use designation between 2001 and 2019.





land conservation

VOLUNTARY ACTION • OUTSTANDING SUCCESS • SAVING PLACES PEOPLE LOVE

THE VIEW FROM SKY MEADOWS.
Photo by Hugh Kenny

Protecting Land and a Legacy

“When you get older, you start thinking about what you’ll leave behind, or what you did to make a difference. One of the ways we feel like our lives could make a difference is by doing something like this. We really love this property and have so much history



here, and we want to do right by it,” said Susan Holden, sitting alongside husband Patrick on the farm his parents bought in 1958.

In 2021, the Holdens partnered with PEC to permanently conserve their rolling 35-acre farm in Loudoun. PEC’s John M. Rowley Goose Creek Land Conservation Fund was able to contribute \$5,000 toward the Holdens’ stewardship costs, while Loudoun County’s income-based Conservation Easement Assistance Program may cover up to half of their easement costs.

Patrick’s memories of this place go back

to age six, moving here with his parents in the late 1960s and helping his brothers run the farm before heading to the west coast for college. He and Susan moved back as a young married couple to care for his mother, who suffered from advanced multiple sclerosis, and have been here ever since. Their two sons are the third generation of Holdens to live on the land.

The Holdens have also decided to focus on managing the property for wildlife habitat, “to bring the land back into balance with nature, to provide habitat for pollinators and birds, as well as maximize carbon sequestration,” Patrick said.



SUSAN AND PATRICK HOLDEN AT THEIR LOUDOUN COUNTY FARM. Photo by Hugh Kenny

Observing the rolling hills from his front door, Patrick says, “It still looks very much the way I remember it growing up, and when we’re gone, this is our gift to the land. We feel very fortunate and blessed to be able to express our values through an action like this. My mother was very environmentally aware and concerned, and she would be thrilled.”

2021 Highlights

- **55 conservation easements protecting 6,474 acres** of private lands were completed in 2021. PEC’s service region now has 433,131 acres of permanently protected private lands.
- After a campaign by PEC and other conservationists, Governor Northam signed a **new law that preserves the integrity of all conservation easements** by ensuring that any dispute over easement terms is decided in favor of the conservation purpose of the easement. The legislation makes it clear that the conservation purposes for which private landowners have contributed so much will remain paramount.
- PEC secured more than \$1 million in federal and state funds to purchase a conservation easement of a major livestock farm in Culpeper.
- PEC partnered with The Nature Conservancy and Trust for Public Land to conduct a public survey that showed strong across-the-board **support for increased investments in land conservation**. Released in June, the survey revealed that more than three-quarters of Virginia voters throughout the state and across party lines are supportive of the General Assembly dedicating \$300 million annually in conservation efforts to protect Virginia’s natural resources.
- PEC helped the Germanna Foundation successfully apply for a \$647,370 Virginia Land Conservation Foundation grant to **permanently conserve the Siegen Forest**, 170 acres along the Rapidan River and Route 3. This historic property contains seven miles of walking trails that are accessible year-round, and it borders the Rapidan River for 1.4 miles.
- In February, PEC posted a **new guide for landowners** to learn more about conservation easements. *Protecting Your Land with a Conservation Easement* provides an introduction to conservation easements, including an overview of the public benefits and the financial incentives associated with donating a conservation easement.

6,474 Acres Protected in 2021

County	Acres protected in 2021 by Conservation Easements	Total Acres* protected by Conservation Easements
Albemarle	721	109,590
Clarke	305	26,786
Culpeper	869	21,275
Fauquier	339	109,826
Greene	0	10,648
Loudoun	3,507	66,191
Madison	250	16,365
Orange	340	38,894
Rappahannock	143	33,557
PEC Region	6,474	433,131

* Total does not sum due to rounding



strong rural economies

THRIVING FARMS • LOCAL FOOD • INNOVATION • HEALTHY, WORKING LAND

VALENCIA'S PRODUCE AT THE LEESBURG FARMERS MARKET.
Photo by Hugh Kenny

Increasing access to good jobs and local food

“Increased demand and not as many hands to do it. It just makes for a perfect storm of sorts.” That’s how Trey Williams, a veteran butcher who helps manage a local meat processing facility, described the problems facing the Piedmont local meat industry. In partnership with PEC, American Farmland Trust (AFT) and the Rappahannock Center for Education (RCE), Williams stepped up to do something about it. Together we started a new meat cutter training program that will help Piedmont farmers increase their profits, while putting other local residents on a path to good skilled jobs.

Raising beef cattle has become one of the region’s dominant agricultural land uses, but it’s hard for Piedmont farmers to turn a profit. Most beef cattle are shipped to distant stockyards, and the biggest slice of the profits go to other companies in the national and global food chain. This started to change with the onset of the pandemic, as consumers found empty shelves in the supermarkets and turned to local livestock producers and processors to buy their meat. Farmers and processors were suddenly fielding a deluge of orders for their products, which provided great opportunities to expand their businesses but also overwhelmed local processors’ capacity to provide

consumer-ready cuts.

PEC collaborated with AFT to identify solutions. Thanks to a grant from Prince Charitable Trusts, we hired a consultant to visit and write an assessment of the region’s seven USDA-certified animal processing facilities. Time and again, the processors told us their biggest challenge was a shortage of skilled labor. In response, PEC, AFT and RCE teamed up to start the new meat cutter training program in November, and Williams offered to lead the course. The class mixed lectures with on-the-job training at the processing facility at Ayrshire Farms in Upperville, where Williams works.



PREPARING LOCAL CUTS AT BLUE RIDGE MEATS.
Photo by Hugh Kenny

The course wrapped up in February, with all seven students graduating and several starting internships at local facilities. RCE plans to offer another session of the course in spring 2022.

2021 Highlights



► PEC’s **Farm to Food Bank initiative** provided 11,487 gallons of locally produced milk, 39,960 eggs and 3,507 pounds of meat to food-insecure residents in 2021. This initiative, which connects local farm producers to food banks, has since been replicated by the state, through the Virginia Agriculture and Food Assistance Program.

► Our **Community Farm at Roundabout Meadows** ushered in its third growing season this spring and welcomed more than 750 volunteers through its gates. Thanks to the help of our volunteers, we were able to donate more than 35,000 pounds of fresh fruits and vegetables to Loudoun Hunger Relief and other Loudoun County partners. 2021 also brought many new additions to the farm, including our first summer intern, several laying hens whose eggs will soon become part of our food donations, two American Guinea Hogs that serve as farm ambassadors and agents of soil health and community education, and many new varieties of fruits and vegetables.

PLANTING AT ROUNDABOUT MEADOWS.
Photo by Marco Sánchez

► In May, PEC published and mailed the 15th annual **Buy Fresh Buy Local** guide to more than 300,000 Piedmont households, connecting residents with farms and food businesses selling locally grown products. Thank you to the individual and local business sponsors whose contributions funded the publication 100%.





history and beauty

SENSE OF PLACE · SCENIC VIEWS · BATTLEFIELDS · HISTORIC DISTRICTS

THE RAPIDAN RIVER, WITH CLARK MOUNTAIN ON THE HORIZON.
Photo by Hugh Kenny

A monument to a historic crossroads and to U.S. Colored Troops

“I don’t think you can fully understand the story of the Civil War without looking at the contributions of the nearly 200,000 United States Colored Troops who fought for the Union army,” says Howard Lambert, “and you can’t tell a full story of Culpeper County without telling the story of the United States Colored Troops.” With support from PEC, Lambert and the Freedom Foundation of Virginia led a years-long effort to establish the Maddensville Historic Site — Virginia’s first monument to U.S. Colored Troops (USCTs).

The hamlet in eastern Culpeper around the memorial site is named

for the Maddens, a free black family that settled here in the 1830s. Willis Madden owned and operated what was the only Black-owned and operated antebellum tavern in the Virginia Piedmont. Thousands of Civil War troops marched through Maddensville, including three unidentified USCT veterans who were captured and executed by Confederate troops on May 8, 1864.

At this historic crossroads, an elegant granite obelisk now memorializes the sacrifice of the three unnamed men. Three Civil War Trails markers stand before the obelisk, commemorating Madden’s Tavern, nearby Ebenezer Baptist Church and 17 Culpeper-born

USCTs who served in the 4th Division, 9th Corps Army of the Potomac. Thanks to financial support from Gail Munger and the Farkas Family Foundation, PEC provided the funding for the obelisk and interpretive signs. The current landowners, the Tingler and Hawkins families, donated an easement for the memorial. Civil War Trails, Inc. conducted essential research and helped the Freedom Foundation obtain the three markers.

“It’s truly a labor of love for me, to come back to my hometown and focus on

what happened here,” says Lambert. “It’s part of my growing up and I feel the need to share with other people so they have a greater appreciation for the sacrifices of all people during the Civil War.”



USCT REENACTORS AT THE MADDENSVILLE HISTORIC SITE UNVEILING.
Photo by Hugh Kenny

2021 Highlights



PEC’S KRISTIE KENDALL WITH AAHA PRESIDENT KAREN HUGHES WHITE. Photo by Hugh Kenny

- ▶ PEC helped lead a successful campaign to provide new funding for the state Department of Historic Resources to survey and document historic resources in underrepresented communities. The state budget provided \$250,000 for this purpose, a key start toward **better documenting under-recognized historic resources** in Virginia.
- ▶ The Afro-American Historical Association of Fauquier County (AAHA) and PEC developed an online story map documenting **the African American experience in Fauquier County**. This new interactive tool enables visitors to view a map of Fauquier County with points locating historic African American schools, churches and communities, and dive deeper into their histories.
- ▶ The **Rapidan River — Clark Mountain Rural Historic District** is a nearly 40,000 acre historic landscape in Orange County and parts of Madison and Culpeper counties. PEC is working to document the area’s historic resources so that it can be listed in the Virginia Landmarks Register and the National Register of Historic Places. In November, PEC organized a community meeting about the proposed historic district and our research.
- ▶ Beginning this summer, PEC launched a project to revise the National Register-listed **Southwest Mountains Rural Historic District** in Albemarle County. The first phase involves documentary research and mapping of numerous African American communities both within and adjacent to the district. We have created a public web map that highlights the original parcels acquired by African Americans, so the growth of these communities can be visualized.



better communities

CITIZEN INVOLVEMENT • GREAT PLACES TO LIVE • MANAGING TRAFFIC AND TAXES

THE TOWN OF WARRENTON.
Photo by Hugh Kenny

Helping a community restore a **lost trail connection**

Right in the center of Charlottesville, in the historically Black neighborhood of Fifeville, Tonsler Park is one of the city's busiest. Its recreational assets include a playground, splash park, ballfields, and rec center. Its proximity to

the neighborhood's business district along Cherry Avenue makes it a popular place for families and people of all ages to gather.

Just 600 feet away, the residents of Greenstone of Fifth, an income-qualified

community of 202 townhomes and apartments, can see the park from their homes. To get there, though, they have to walk more than a half mile along a busy Fifth Street with no side-walks. Many neighborhood residents still remember when they could walk to the park on an informal path that followed the old course of Fifth Street S.W., which the city rerouted in the name of urban renewal.



FIFEVILLE-TONSLER TRAIL. Photo by Sophia Chapin

PEC has been part of a coalition led by the Fifeville Neighborhood Association to reconnect Greenstone to Tonsler Park and surrounding neighborhoods. In partnership with Woodard Properties, which owns the land in between, the coalition is building a new natural-surface trail that roughly follows the faint remaining traces of the former Fifth Street.

"The quick history," said PEC Community Organizer Peter Krebs, "is that the Fifeville Neighborhood Association worked with the local planning district to get a small area plan created for the whole neighborhood. That plan envisioned small businesses that residents without cars could walk to and trails throughout the area. Then, with a Heal Charlottesville grant

from Charlottesville Area Community Foundation, the neighborhood association engaged with a whole fleet of other community organizations to find out from community members what an effective trail would be."

PEC and the Rivanna Trails Foundation secured a Get Outdoors Grant from the Virginia Outdoors Foundation to build the trail and worked with Woodward Properties to secure the trail easement. Construction began last fall and is expected to be completed in spring 2022. Having experienced years of exclusion from meaningful input around the future of Charlottesville, the Fifeville neighborhood saw this trail as a way to bring communities together in more ways than one.

2021 Highlights

- ▶ The **Coalition for Smarter Growth**, a division of PEC founded by PEC and partners, led campaigns for safer streets for walking and biking, transit-oriented development at West Falls Church Metro and Prince George's Metro stations, and more housing close to jobs and transit.
- ▶ In March, PEC concluded a two-year effort, in partnership with the City of Charlottesville and others, to acquire two properties for new park land near Ragged Mountain Reservoir. Totalling 147 acres, the two tracts now make up the **Heyward Community Forest**, which connects residents and visitors with more than 2,200 acres of public open space just outside the city.
- ▶ In Orange County, PEC has educated residents and public officials about the impacts of the **Wilderness Crossing proposal**, which would develop 5,000 or more new houses along with new commercial buildings in a rural area near the Rapidan River. PEC has also done research on past mining activities on the Wilderness Crossing land and the public health risks of the old mines. We are sharing our findings with decision makers and advocating that Orange officials take a precautionary approach to any plans for this area.
- ▶ PEC staff have closely followed **Loudoun County's zoning ordinance rewrite process**. In the spring, PEC staff and volunteers completed two public input sessions with county staff to generate suggestions for improving environmental protections in the new ordinance.





clean water

SAFE DRINKING SOURCES • GOOD HEALTH • PLACES TO RECREATE

BOLTON BRANCH IN RAPPAHANNOCK COUNTY.
Photo by Hugh Kenny

Connecting people to the Rappahannock River

The Rappahannock River is a state-designated scenic river providing world class outdoor recreational resources for swimming, paddling, fishing, hiking, birdwatching and more. And yet, before last year, its 55 miles along Fauquier County's border offered only one place to access the river. 2021 changed that with the construction and opening of two access points and three boat ramps in Fauquier.

PEC and many partners have long had a vision for an Upper Rappahannock River Water Trail, with several publicly-accessible put-in and take-out points along the way. In 2017, thanks to a grant from the PATH Foundation, Friends of the Rappahannock (FOR) began to realize this vision in partnership with PEC, the John Marshall Soil and Water Conservation District (JMSWCD), Fauquier County Department of Parks and Recreation, and Virginia Department of

Wildlife Resources (DWR). Together, the partners created a strategic plan for an Upper Rappahannock River Water Trail, identifying potential access sites along with their respective challenges, site design needs, cost estimates and target timelines.

In June 2021, with active support from FOR, Fauquier County constructed and opened the first new boat launch at the existing Riverside Preserve park seven miles west of Warrenton. Two months later at Remington's Rector Tract, PEC and FOR helped Fauquier County open the second boat ramp at Remington's Rector Tract, with funding from the Virginia Environmental Endowment. Then in October, DWR collaborated with JMSWCD to construct the third new boat launch of the year on the southern end of C.F. Phelps Wildlife Management Area, at Roger's Ford.



PADDLERS IN THE RAPPAHANNOCK RIVER. Photo by Amanda Demmerle

These new access points make the outdoors and swimming, fishing, and recreating accessible to people and families of all means. A River Trail website, signage, and paddle tours are on the horizon for spring 2022.

2021 Highlights

- ▶ More than **26 miles of streams were protected** by conservation easements in 2021, bringing the total number of stream-miles protected by conservation easements to 1,792. In addition, 150 acres of wetlands were protected, bringing the total to 10,581 acres. All of these protected resources contribute to the restoration of the Chesapeake Bay, since water flowing through the Piedmont eventually enters the Bay.
- ▶ PEC's **Headwaters Stream Initiative** provides rural landowners with free technical assistance and trees to reforest headwater stream banks. In the upper Rappahannock watershed, PEC and Friends of the Rappahannock reforested riparian buffers on 12 properties. PEC also expanded this riparian buffer work to the upper Potomac watershed in northern Fauquier, Clarke and Loudoun counties, kicking off the Potomac Planting Program in the fall with two plantings restoring seven acres of riparian buffers.



PEC'S MAGGI BLOMSTROM AT A HEADWATER STREAM PLANTING. Photo by Hugh Kenny

- ▶ PEC is helping to **accelerate the pace of water quality improvements** in our region by offering loans to landowners to implement agricultural best management practices on lands with conservation easements. With a \$87,930 loan from PEC's Julian Scheer Fauquier Land Conservation Fund, the Clifton Institute was able to install fencing and an alternative watering system that enhances water quality by excluding cattle from more than 2,800 linear feet of Cedar Run's headwater streams, which are the public drinking water source for the Town of Warrenton.



habitat restoration

.....
WILDLIFE CORRIDORS · BIODIVERSITY · POLLINATORS · NATIVE PLANTS

SHORT-EARED OWL FLYING OVER THE PLAINS.
Photo by Hugh Kenny

Restoring grassland bird habitat

Virginia's Piedmont grasslands are frequented by more than 100 bird species, including breeding and wintering grassland birds that are in steep decline. The Eastern meadowlark, which has declined by more than 70 percent since the 1970s, relies upon private lands for 97% of its remaining habitat in the U.S. The good news is that small changes to farming practices can have big benefits for grassland birds. For example, slightly adjusting the timing of hayfield mowing and implementing pasture stockpiling in the spring can allow grassland birds to successfully nest and fledge their young.

PEC and the Smithsonian Conservation Biology Institute's Virginia Working Landscapes (VWL) have teamed up to help agricultural landowners adopt these and other practices for grassland bird habitat. In 2021, we launched the Piedmont Grassland Bird Initiative, which provides landowners with guidance as well as financial incentives to adjust some of their

land management practices to restore bird habitat.

The initiative builds on VWL's extensive research and expertise on restoring grassland bird habitat — and combines it with PEC's 50 years of experience and relationships working with Piedmont landowners. Recently, Quail Forever and American Farmland Trust have joined the initiative, bringing with them their respective expertise in conservation messaging and technical assistance on working landscapes.

With a grant from Cornell Laboratory's Land Trust Bird Conservation Initiative, the partners have created an incentives program for landowners to alter their haying and grazing practices in favor of protecting grassland birds during their spring nesting season. Landowners who enroll in the program will also allow us to survey bird populations and gain insight on the effectiveness of the newly



EASTERN MEADOWLARK. Photo by October Greenfield

implemented practices. Through building a body of evidence and community of practice, together we can stem the tide of grassland bird decline, improve the resiliency of working landscapes and positively impact the livelihoods that depend upon those lands.

2021 Highlights



- ▶ As part of our effort to promote sustainable landscaping practices, PEC collaborated with the Fauquier Parks and Recreation Department to install a **native plant garden at C.M. Crockett Park** in Midland, VA. The garden included numerous native plant species that provide important food and shelter for pollinators, birds and other wildlife.
- ▶ PEC supported efforts led by Wild Virginia to advocate for developing and implementing a state **Wildlife Corridor Action Plan** to reconnect corridors for native wildlife and fish. The coalition has led successful campaigns to develop the plan, and is now working with VDOT and other state agencies to implement it through policy and funding changes.

CROCKETT PARK PLANTING. Photo by Dan Holmes

- ▶ PEC worked on two projects to **reconnect habitat for Eastern brook trout** in Piedmont headwater streams. The first was on Bolton Branch in Rappahannock County, where we partnered with VDOT to replace an undersized culvert with a wider-spanning crossing that provides full fish passage. The second was on Entry Run in Greene County, where we collaborated with Friends of the Rappahannock and the Potomac Appalachian Trail Club to replace a culvert with a bridge. In the last five years, we have reconnected nearly 20 miles of streams for better fish passage, and in the process, improved both their water quality and their resilience to extreme weather events caused by climate change.



energy, transportation & climate

INCREASING RESILIENCY • REDUCING VEHICLE MILES TRAVELED • STORING CARBON

THE INTERCHANGE OF ROUTE 7 AND ROUTE 28 IN LOUDOUN COUNTY.
Photo by Hugh Kenny

Finding common ground

More than 70 people, from Fairfax to Winchester, gathered at the Blue Valley Vineyard and Winery in Delaplane on a Saturday in December to hear from Dr. Katharine Hayhoe, renowned climate scientist and author of the recently published book *Saving Us: A Climate Scientist's Case for Hope and Healing in a Divided World*. Dr. Hayhoe read aloud from her book and discussed its implications for climate change communication. In conversations on climate change with those of differing opinions, she said, “the key is what we have in common, not what divides us.” Further, it’s important to “always talk about positive, constructive solutions,” she said, “because the number one thing we need these days is hope.”

The event was hosted by the Blue Valley Ladies Book Club and co-sponsored by PEC, Old Town Open Book and Blue Valley Vineyard and Winery. During her talk Hayhoe emphasized the importance of joining with

others to take collective action on climate change, like starting a local group that addresses food waste, petitioning institutions to divest from fossil fuels or participating in community science projects.

“A great message on finding common ground and common cause,” said PEC President Chris Miller. “Climate action is not in conflict with better quality of life, our health or economy. For example, when we add native plants along our streams and rivers in an effort to improve drinking water, we also restore habitat, reduce the heat island effect and take carbon out of the atmosphere.”

Audience member Dr. Samantha Ahdoot, founder of Virginia Clinicians for Climate Action, gave Hayhoe a mask with Virginia’s warming stripes, a visual representation of annual temperature change from the 1800s to today. “That’s a great way to start a conversation,” said Hayhoe, “and I love that it’s Virginia.”



DR. HAYHOE WITH PEC PRESIDENT CHRIS MILLER. Photo by Sophia Chapin

Citizens Climate Lobby, a non-partisan grassroots organization, and The Nature Conservancy, for which Hayhoe is the Chief Scientist, were also present.

“Katharine’s genuine enthusiasm and patience for finding common ground with our neighbors brought forth so much authentic conversation from the audience,” said one attendee. “I was blown away.”

2021 Highlights

- ▶ PEC created a briefing document to provide context for **climate change impacts** in Albemarle County and to serve as a springboard for conversations about positive local action.



- ▶ Throughout the year, PEC advocated against sprawling approaches to development, like the ill-conceived boundary line adjustment being promoted in Warrenton, which would expand the Town boundary by 1,750 acres—a full 60% increase in land area. The proposal focuses too heavily on new development on the outskirts of Town rather than **redevelopment, community enhancement and infill development** of vacant and under-used properties within the existing Town boundaries.
- ▶ Working with a coalition of organizations, PEC highlighted efforts to undermine the **Prince William Rural Crescent** and open up vast acreage to industrial sprawl, paving the way for a renewed push to build an “Outer Beltway.”

PEC'S JULIE BOLTHOUSE SPEAKS AT A PRESS CONFERENCE ABOUT PROPOSED PRINCE WILLIAM COUNTY DATA CENTERS. Photo by Hugh Kenny

- ▶ PEC continues to push for improvements to processes related to **utility-scale solar** siting and permitting. In 2021, PEC and partners submitted comments on an application to develop a utility-scale solar project at Dulles Airport. PEC was generally supportive of the project, arguing it should maximize the potential on rooftops and structures, increasing the overall generation provided and allowing for a more sensitive panel design for the greenfield portion.
- ▶ In Loudoun County, PEC staff provided climate, natural resource and energy-related suggestions to the zoning ordinance rewrite and participated on the first **Loudoun Environmental Commission** advising the Board of Supervisors on natural resource and energy initiatives.



The Piedmont Foundation

Photo by Hugh Kenny

Established to hold and manage special funds in support of PEC, the Piedmont Foundation assures PEC's capacity to respond to key opportunities and challenges as they arise and to fulfill our core mission over the long term. A separate 501(c)(3) charitable organization governed by an eight-member Board, the Foundation accepts gifts of cash, securities, property and appreciated assets. The Foundation also offers opportunities for tax-advantaged planned gifts, including trusts, bequests and life income plans.

Currently, the Piedmont Foundation manages funds in the following categories:

- ▶ **Conservation Stewardship Fund — Evergreen Fund (Board Directed)**
- ▶ **Easement Defense Fund**
- ▶ **General Endowment Fund**
- ▶ **Piedmont Memorial Overlook Fund**
- ▶ **Albemarle County Land Conservation Program Endowment Fund**
- ▶ **Albemarle General Endowment Fund**
- ▶ **Backer Fund**
- ▶ **Land Conservation Officer Endowment (Albemarle) Fund**
- ▶ **CRUT Fund**
- ▶ **Smart Growth Fund**
- ▶ **Unrestricted Fund**

▶ **Land Conservation Fund**

Within this fund, the following Regional Land Conservation Funds have been established:

Bull Run Mountains Land Conservation Fund
Clarke County Land Conservation Fund
Culpeper County Land Conservation Fund
Greene County Land Conservation Fund
Krebsner Fund for Rappahannock County Conservation
Madison County Land Conservation Fund
Orange County Land Conservation Fund
James M. Rowley Goose Creek Land Conservation Fund
Julian Scheer Fauquier Land Conservation Fund

Contributors to the Piedmont Foundation

Protectors of the Piedmont \$100,000+

Mr. and Mrs. John H. Birdsall, III

Champions of the Piedmont \$10,000 - \$24,999

Department of Conservation and Recreation*

Mr. William Dove*

Wrinkle In Time Foundation

Stewards of the Piedmont \$5,000 - \$9,999

Lynx Investment Advisory LLC

Ms. Virginia S. Warner

Patrons of the Piedmont \$1,000 - \$4,999

Dun Foundation

Richard and Hilary Gerhardt

Mr. and Mrs. Theodore Guarriello Jr.

Mrs. Suzanne H. Scheer

Mike and Margrete Stevens

Supporters of the Piedmont \$500 - \$999

Citizens for Fauquier County

Mr. and Mrs. Charles R. Planck

Ms. Charlotte Tieken*

Friends of the Piedmont \$100 - \$499

James Bleakley

Canoe Cruiser Association

Mr. Tom Garrahan

Mr. and Mrs. Cary T. Grayson

Mr. Michael W. Isel, III

Aubrey Johnson

Mr. Patrick Kavanagh

David Lee

David V. Mangano

Mr. and Mrs. Michael G. Motion

John Odenkirk

Mr. Grey Scheer

Mr. and Mrs. Berk Shervin

Ms. Beverly Stickles

* Land Stewardship Fund gift

Piedmont Foundation Board of Directors 2021/2022

Mark Ohrstrom,
President

Trevor Potter,
Vice President

Charles Akre,
Secretary-Treasurer

John H. Birdsall, III
George Ohrstrom, II*
Jean Perin*
Diana Prince
Chris McLean

* Ex-Officio

Contributions

With much gratitude, PEC presents the names of individuals, families, foundations, businesses and organizations that supported The Piedmont Environmental Council during 2021. Although we do not have the space to honor everyone, we are extremely grateful for the generosity of each of our members. We offer sincere thanks for your ongoing commitment to promoting and protecting the Piedmont region.

Protectors of the Piedmont

\$100,000 +

William M. Backer Foundation

Agua Fund, Inc.

Mr. Stephen Graham

The August Heid Trust, Bank of America, N.A., Trustee

Mrs. Jacqueline B. Mars

George and Manci Ohrstrom

Ms. Jean Perin

Prince Charitable Trusts

Ms. S. Sonjia Smith

The Volgenau Foundation

Anonymous

Guardians of the Piedmont

\$50,000 - \$99,999

Mr. and Mrs. John H. Birdsall, III

The Campbell Foundation

The Farkas Family Foundation

Molly and Robert Hardie

No Kid Hungry Virginia

George L. Ohrstrom, Jr. Foundation

PATH Foundation

Wrinkle In Time Foundation

Defenders of the Piedmont

\$25,000 - \$49,999

Brendan and Helen Bechtel

Cornell Lab of Ornithology

Hillsdale Fund, Inc.

James L. Kleeblatt Memorial Foundation

The Lazar Foundation

The Estate of Joseph Ramsey Martin Jr.

The Musser Family Fund

Nimick Forbesway Foundation

Karin and Mark Ohrstrom

Sacharuna Foundation

Anonymous

Champions of the Piedmont

\$10,000 - \$24,999

Mrs. J.W. Abel Smith

American Farmland Trust

Ms. Anita Antenucci

Betty McGowin Charitable Trust

Ms. Barbara H. Chacour

Charlottesville Area Community Foundation

Cheek Family Foundation

Mr. and Mrs. J. Sheldon Clark

Clark Family Foundation Inc.

James C. Collins and Virginia Donelson

Brian and Lucy Conboy

Peter and Betsy Corsell

Michael and Karen Crane

Jesse and Sherri Crawford

Steven J. Dahllof and Thomas S. Foster

George de Garmo
In memory of Marcia de Garmo

Mr. and Mrs. Thomas H. DeLashmutt

Mrs. Frances Massey Dulaney

Glenn and Natalie Epstein

Fauquier's Finest

The Helen Clay Frick Foundation

Cleo and Michael Gewirz

Gene Gulland and Elizabeth Ellers

Lynne and Joseph Horning

James Iker and Hayes Nuss

Jacquemin Family Foundation, Inc.

Kathy and Ken Kies

Constance B. Krueger Estate

The Luminescence Foundation, Inc.

Bonnie Mattingly

Medway Charitable Trust

LAVERNE (TOOTIE) WARNER WITH PEC'S GEM BINGOL IN THE VILLAGE OF ST. LOUIS, LOUDOUN COUNTY. Photo by Hugh Kenny



Mr. and Mrs. Christopher
G. Miller

Nancy Guy Miller and
Michael Miller

Jeanne and Michael Morency

National Fish and
Wildlife Foundation

Richard and Nancy Raines

Marie W. Ridder

Barbara and David Roux

Mark and Amy Tercek
Foundation

Valley Dale Fund

Virginia Environmental
Endowment

The Honorable and Mrs.
William Webster

Lauren and René Woolcott

Anonymous (2)

Stewards of the Piedmont

\$5,000 - \$9,999

BAE Systems

The Bama Works Fund of
Dave Matthews Band at
the Charlottesville Area
Community Foundation

Black Dog Foundation

Mrs. Edward Bonnie

Christy Brown

Mr. and Mrs. Childs F. Burden

Carol and Landon Butler

The Capule Fund

Mr. and Mrs. P.
Hamilton Clark III

Leslie and Andrew Cockburn

Culpeper Wellness Foundation

Mr. William J. Curtin III

Mr. and Mrs. J. Bradley Davis

Marlene Dennis

Helen and Ray DuBois

Dun Foundation

Mr. and Mrs. Thomas
F. Dungan, Jr.

Max and Ruth Emma

Mr. and Mrs. Greg Fazakerley

Jane Fisher and
Michael Bowles

Enrique Solari-Garat
and Ariana V. Carles

Mrs. Michela Gorham
In memory of
Dr. Daniel B. Gorham

Cynthia and John Grano

George Grayson and
Maria Tousimis

Ms. Georgia H. Herbert and
Mr. Kenneth L. Garrett

Mr. and Mrs. Loren W. Hershey

Mary Buford and Fred Hitz

Mary L. Howell

Mr. Joe Kasputys and
Mrs. Vicki Van Mater

Elizabeth Baker Keffer

Mr. and Mrs. Robert Kelly

Ann and Mark Kingston

Mr. Bryce Lingo

Logan Family Foundation

County of Loudoun

John and Susan McCarthy

Mr. and Mrs. Charles
G. Mackall, Jr.

Madison County
Historical Society

The Honorable Mary
V. Mochary

Orvis Great Giveback Day

Michael A. Pausic and
Kelley A. MacDougall

Mr. and Mrs. Michael Prentiss

John Richardson
In memory of
Peggy Richardson

Roger Sant and Doris Matsui

Mrs. Suzanne H. Scheer

Charles and Nora Seilheimer

Shilling Foundation

Mrs. Fera Simone

Mr. Peter Stoudt and
Ms. Alice Handy

Trout & Salmon Foundation

Jing and Nithi Vivatrat

Laurie Louise Volk

Wegmans Food Markets, Inc.

Mrs. James L. Wiley, Jr.

Cabell and Katherine Williams

Anonymous (3)

Patrons of the Piedmont

\$1,000 - \$4,999

4P Foods, Inc.

Acharya & Krishnan Fund

John B. Adams Jr.

Tom Akre and Erika
Gonzalez-Akre

David Alberswerth
and Cary Ridder

Jennifer and David Aldrich

Drs. Kent Allen and Rae Stone

Christopher and
Laurie Ambrose

American Foundation

Jim and Nathalie Andrews

Argyll Foundation

Ms. Peggy Augustus

John and Delma Bagley

The Tad Baldwin Family Fund

Ruthe R. Battestin

Bebie Family Charitable Trust

Ms. Bethann Beeman

Dr. and Mrs. Karl M. Beier

Arik Ben-Zvi and
Victoria Canavor

Mr. and Mrs. Robert Bernard

Karl J. Pfefferkorn and
Katherine Birdsall

Dr. Andrew Bishop and
Mrs. Jane C. Bishop

Mr. and Mrs. Brian Boland

Ms. Elaine Boland

Brad and Tandy Bondi

Mr. and Mrs. Thomas Borger

The Boston Foundation
— Beachcomber Fund

Mr. and Mrs. Kristopher
Boushie

Mr. Brooks Bowen

USCT MEMORIAL UNVEILING CEREMONY. Photo by Marco Sánchez



The Ronald M. Bradley
Foundation

Mr. and Mrs. Boris Brevnov

Fred and Heather Briggs

Mr. Andrea and Jennifer
Bullard Broggin

Brzezinski Family Foundation

Thomas and Briana Burk

Judith Ayres Burke and
John W. Burke III

Becky Burr and Neil Simon

Mr. and Mrs. George
M. Chester, Jr.

Citizens for Fauquier County

Anne and Sean Clancy

Mrs. Bertrand Collomb

Scott Steen and David Cooper

Mr. and Mrs. Roger Courtenay

Sir Peter Crane and
Lady Crane

Mr. and Mrs. William
Carey Crane III

Culpeper County Government

Abigail T. Cutter and
W. Bowman Cutter

Mrs. Elizabeth C. Dalgliesh

Gordon Dale and
Connie Carter

Jack and Page Carter Fund

Mr. and Mrs. J. Bradley Davis

Drs. Joseph and Pamela Davis

Robert and Adeline deButts

Dr. Morgan Delaney and
Mr. Osborne Mackie

Mr. and Mrs. John B. Denegre

Mr. Mitchell S. Diamond
and Ms. Lucy Bernstein

District Social Justice
Fund of American
Endowment Foundation

Lynn and Edward Dolnick

Mr. and Mrs. Robert Dove

John and Paula Dowdy

Alan and Susan Dranitzke

Duffy Family Foundation

Mr. and Mrs. Roy Dye

Mr. and Mrs. Scott Elliff

Fauquier and Loudoun
Garden Club

Ms. Jackie Fernandes

Mr. and Mrs. Andrew Ferrari

Flachs Family Fund -
Northern Piedmont
Community Foundation

Richard and Barbara Fontaine

Diana Foster and
Thomas Jones

Florence Bryan Fowlkes

Lisa and James Fox

Joice and David Fredenburgh

Frederick H. Prince and
Diana C. Prince Foundation

Mrs. Robert L. V. French

Pamela Bliss French

Bryon Fusini and
Stephen Waudby

Mr. and Mrs. Jim Gehris

Ms. Elizabeth H. Gemmill

Mr. and Mrs. Mark Gerchick

Gardner and Stevie Gillespie

Mr. and Mrs. John Giovenco

Mr. and Mrs. Donald Glickman

Corrine and Timothy Glover

Lawrence Golding Foundation

Mr. and Mrs. Paul Goodall

Michael and Priscilla Goodwin

Mr. and Mrs. Porter J. Goss

Ms. Terry Grant

Mr. and Mrs. W.
Cabell Grayson

Great Outdoor Provision Co.

Stuart T. Greene

Mr. and Mrs. A.
Dandridge Gregg

Ms. Stella Grenier

Grills Family Foundation

Mr. and Mrs. Theodore
Guarriello Jr.

Pamela Gwaltney

Donna Hackman

Mr. Garland T. Hall and
Mr. Michael Goodfellow

Mr. and Mrs. R. Barry Hamilton

Ms. Jessie M. Harris

Ms. Maureen I. Harris

Joyce and Henry Harris

Mr. and Mrs. Paul T. Hasse

Caroline and Seth Heald

Heller Family Charitable Fund

Mr. and Mrs. Thomas
L. Higginson, Jr.

High Tor Gear Exchange

Ms. Kat Imhoff and
Mr. John Moore

Irwin Family Trust

Rossman Irwin III

Mr. William Izard

Dr. Roy S. Jacobson and
Ms. Carolyn E. Hitchcock

Anne P. Jacoboski

Ms. Maxine Janes

Pamela and John Jaske

Mr. E. Scott Kasprovicz and
Ms. Elizabeth Thorsey

Lynne Kaye and Leo Subler

Mr. Alton Keel Jr.

Ms. Meg Keeley and
Mr. Khris Baxter

David L. Kennell and
Clare Lindsay

Welcome to St. Bride's Farm

Barb and David Roux were the hosts of the 2021 Farm-to-Table Dinner. St. Bride's reflects their love of nature, horses and art. It was a magnificent evening for all who attended and included a tour of the sculpture collection as well as cocktails at various locations on the property, concluding with a farm-to-table dinner sourced from PEC's *Buy Fresh Buy Local* guides.



UPPER: BARB ROUX AND CHRIS MILLER ADDRESSING THE GUESTS.
LOWER: A PERFECT EVENING AT ST. BRIDE'S FARM.
Photos by Hugh Kenny



ORVIS'S JIMMY ALIFF PRESENTS A CHECK TO PEC STAFF TO FUND RESTORATION WORK AT BOLTON BRANCH IN RAPPAHANNOCK COUNTY. Photo by Hugh Kenny

Mr. and Mrs. Don King	Mr. Bruce McLeod	Sean McGuinness and Lori Keenan McGuinness
Mr. and Mrs. Roger H. W. Kirby	Ms. Marion Maggiolo	Mr. Christopher L. McLean
Mr. and Mrs. Brian Krebs	Mrs. Margaret E. Mangano	Ms. Katherine McLeod
Mr. and Mrs. Steven Lamb	Dr. Jessica Tuchman	Middleburg Real Estate, Inc.
Todd and Kathryn Lamonia	Mathews and GEN Charles G. Boyd, USAF, Ret.	Cliff Miller Family Endowment
Ms. Anna T. Lane	Drs. Alan and Julie Matsumoto	Mr. Bryan Mitchell and Mrs. Constance Chamberlin
Troy and Tracey Laws	Beth and Tim McClain	James and Jill Mitchell
Mr. Hunter Lewis and Ms. Elizabeth Sidamon-Eristroff	Robert McConnell	Jill and Robert Monk
Stephen Lillis	Mary C. McCoy	Mr. Dulany Morison and Mrs. Eleanor Morison
Dale and Ingrid Lindsay	McDermott Family Fund	George and Hope Morison
Winkie Mackay-Smith	Wallace and Anne McDowell	Morton Family Foundation
Joe McKenna and Sarah Brennan	Mr. and Mrs. Michael McGettigan	Mr. and Mrs. Andrew Motion

Mountain Laurel Foundation	Dr. and Mrs. Jerold Principato	Mr. Christopher Spon and Mr. Howard Bard
MSA Family Fund	John Rabasa and Peggy Gilges	Mr. Joseph Spytek and Dr. Stephanie Spytek
Mrs. Jessica Nagle	Ms. Laura Revitz	Ms. Chloe Squires
Kim and Arthur Nash	Lucy S. Rhame	John R. Staelin and Elizabeth F. Locke
National Trust for Historic Preservation	Allen and Jennifer Richards	Ms. Mary Lou Steptoe
Mr. George M. Neall III	Mrs. Emily P. Ristau	Mr. Sidney L. Stern III
New Dominion Solutions, LLC.	Mr. and Mrs. David P. Rochester	Mike and Margrete Stevens
Joy M. Oakes and Thomas J. Cassidy	Rossetter-Cuthbert Fund	Janet Jones Stone Foundation
Mr. and Mrs. Christopher Ohrstrom	Drs. Margit Royal and Jerry Wolford	Mr. and Mrs. Philip Strange
Susan W. Oldfield	Richard and Evelyn Ruffin	Mr. Jefferson S. Strider
Dr. Michael Olding and Mr. Chris Morrison	Ruina Family Fund	Ms. Page D. Styles
Over the Line Fund	Mr. and Mrs. Thomas Salley	Dr. Nancy Telfer
George and Susan Overstreet	Lena Scott Lundh and Lennart Lundh	Terra Alpha Investments
Kevin and Carla Passarello	Tod Sedgwick	Mr. and Mrs. George Terwilliger
Mrs. Nicole Perry and Mr. Andrew Stifler	Mr. and Mrs. Charles H. Seilheimer Jr.	Thomas and Talbot Real Estate, LC
Mr. Joseph M. Perta and Mr. Carl Davis	Mr. Milton Sender	Ms. Charlotte Ticken
Dr. and Mrs. Michael J. Petite	Sheridan-MacMahon, LTD	Peter and Laura Unger
Natalie Pien and Steven Sawtelle	Mr. and Mrs. J. Donald Shockey Jr.	Mr. and Mrs. Alfred P. Van Huyck
Mr. and Mrs. Charles R. Planck	Missy and Doug Smith	Beau and Deadria Van Metre
Mrs. Elizabeth Plentovich	Mr. and Mrs. D.M. Smithwick, Jr.	Venus Bestow 2 Fund
Caroline C. Polhemus	Mr. Mark T. Snyder	Mr. and Mrs. Raymond E. Vickery Jr.
The Honorable Trevor A. M. Potter and Mr. Dana S. Westring	Carol E. Sodolski	Mr. Joseph Volpe III
	Richard and Polly Spencer	Mr. and Mrs. Bill Walde
	Martha H. Spencer	

Mr. and Mrs. Christopher Wall

Dr. Douglas Ward and
Mr. Earl Johnson

Mr. and Mrs. Michael D. Ware

John W. Warner, IV.
Foundation, Inc.

Ms. Viviane Warren

Emily Gilges Watson

Mr. and Mrs. Thomas Whelan

Mr. and Mrs. Harvey J. Wilcox

Carter and Erica Wiley

Sisi Gallagher and
Michael Williams

Richard Williams

Ms. Sylvia J. Wilson

Mrs. Virginia Dorkey Wilson

Ms. Eileen A. Wilson

Melissa and Mark Winchester

Wise Foundation

Dr. William Wolf and Mrs.
Elizabeth Guarisco Wolf

Dr. Steve Wolf and
Dr. Lisa Kelly

Mr. and Mrs. David J. Wood Jr.

Alan and Irene Wurtzel

Anonymous (3)

Supporters of the Piedmont \$500 - \$999

Adams Charitable Foundation

America's Charities

Mr. and Mrs. Mark D. Andersen

Mr. and Mrs. William
J. Anderson

Mr. and Mrs. Howard Armfield

Mr. and Mrs. Jonathan Atkins

Mr. Frederick Atwood

Dr. and Mrs. Christopher
A. Bailey

Mrs. Agatha S. Barclay

Richard and Patricia Barnhardt

Ms. Elizabeth Barratt-Brown
and Mr. Ralph Dewey

Mr. and Mrs. Paul Bateman

Mr. John Beardsley and
Ms. Stephanie Ridder

Mr. and Mrs. H. K. Benham III

Ms. Katherine Berger

Gem Bingol and
Richard Fausnaught

Ms. Sharon Bishop

Mr. and Mrs. Ivan Blumberg

Mr. and Mrs. Chris Borneman

Calvert Bowie and
Alex Orfinger

Mr. Robert D. Broeksmit and
Ms. Susan G. Bollendorf

Catherine W. Brown

Mr. and Mrs. Stephen Bullock

Robert Burnham and
Kathryn Onion

Mr. Jeff BurrIDGE

Dr. and Mrs. John Buursink

Caplin Foundation

Brian Carlton and
Elizabeth Sumpter

Dr. and Mrs. Charles Carroll, IV

Mr. and Mrs. Ian Carter

The Charles Fund

Priscilla Clapp

Mr. and Mrs. Joseph
Coleman Jr.

Mr. Malcolm Collum

Benjamin S. Cooper
and Polly L. Gault

Dr. and Mrs. R. Reynolds
Cowles Jr.

Mr. Andrew Creighton

David and Trish Crowe

Ms. Karen Darby

Read deButts and Lisa Ostroff

Ms. Josephine de Give

Anna and Stanley Dees

Mr. and Mrs. Tobias Dengel

Mr. John G. Dennis

Dr. Lydia Donaldson and
Dr. William McCormick

Maite and Kevin Dougherty

Mr. and Mrs. Guy O. Dove III

Mr. and Mrs. William S. Driskill

Jane and Phil Eberhardt

Mr. and Mrs. Robert S. Eliot

Karissa Epley

Fairfax County Water Authority

Ms. Diana Ferris

Mr. and Mrs. Charles Fortuna

Ms. Gabrielle G. Gallegos

Dr. Matt Gavin and
Mrs. Holidae Hayes

Mr. and Mrs. W.
Douglas Gilpin Jr.

Glenmerle Giving

Jennifer Greenleaf

Grelen Nursery, Inc.

Dr. and Mrs. Charles
B. Greyson

Ms. Rachel Hammes

Mr. and Mrs. Raymond
Heatherton

Gertraud Hechl

Mr. John L. Helmly and
Mrs. Caroline M. Nash

Ms. Ellen Hill

Peggy T. Hunt

Scott Imhoff

Integral Yoga Natural Foods

Michael Kane & Margaret
Mentink-Kane

Catherine Kerkam
and Bryan Benitz

Mr. and Mrs. Kenneth
K. Knapp Jr.

Ms. Sheila LaFalce and
Mr. Paul Nevins

Larkspur Services, Inc.

Mr. Kurt Lawson

Greg Love

David and Emily Luebke

Mr. and Mrs. Stewart Marr

PEC'S PETE WALTON WITH MAPLE, ONE OF OUR TWO GUINEA HOGS AT THE COMMUNITY FARM AT ROUNDABOUT MEADOWS.
Photo by Hugh Kenny



The Bill Backer Legacy Society

Named for the avid conservationist and former Piedmont Foundation President Bill Backer, the Legacy Society recognizes donors who have made planned gifts to The Piedmont Environmental Council (PEC) or to The Piedmont Foundation (PEC's supporting foundation).

Planned gift options include making a bequest through a will, codicil, or trust, or recognizing The Piedmont Foundation or PEC as a beneficiary of an IRA or retirement plan. Gifts of property and other assets are also possible.

A gift to The Piedmont Foundation can be applied to the General Endowment Fund or one of the county conservation funds. The General Endowment provides annual income to PEC to help offset the operating budget. Gifts to the county conservation funds provide the resources to participate in conservation activities specific to individual counties.

Gifts made to PEC can be directed to specific activities or left to the discretion of the Board of Directors to allocate where funding is most urgently needed.



PIEDMONT MEMORIAL OVERLOOK IN AUGUST.
Photo by Hugh Kenny

Mr. Malcolm Matheson,
III and Ms. Nancy West

Kim and Marla McIntyre

Mrs. Sally McVeigh

Mr. and Mrs. Charles Medvitz

Mr. David Melby

Deirdre Middleton

Chuck Millsaps

Mr. Samuel Mitchell and
Mrs. Mary Ewing

New Country Organics

Northern Virginia
Electric Cooperative

Mr. and Mrs. Fuller O'Connor

Mr. Phil Paschall

Mr. and Mrs. Mark Perreault

Scott and Page Peyton

Mr. and Mrs. John Porter

Prince Charitable Trust

Eugene and Jeneanne Rae

Mary M. Raiser

Kevin Ramundo and
Anne D'Ignazio

Rappahannock
County Farm Tour

Mrs. Avis Renshaw and
Mr. Steven Cox

Rockley Foundation

Ms. Carolyn Ross

Mr. and Mrs. George E. Sabato

Ms. Diana Samponaro

Mr. and Mrs. Tony Samra

Dr. Tom Sanchez and
Mr. Anthony Shop

Mr. Robert Schubert

Catherine Scott and
Jamie Resor

Mr. William Snyder and
Dr. Laurin Mack

Leah Stearns

Douglas Stewart and
Tamara Harvey

Daniel Studnick and
Dennis Stout

Mr. and Mrs. Reid P. Stuntz

Mr. and Mrs. Donald G. Taylor

Laura and Mark Tekrony

Mr. James Thompson

Ms. Laura Van Roijen

Virginia Native Plant Society

Mr. and Mrs. Richard Wallach

Mark and Jasmine Warren

Mrs. Judith D. Washburn

Ms. Sally Weldon

Mr. and Mrs. W.
Robert Wheeler

Mrs. Margaret White

Ms. Carey C. Whitehead

Mrs. Katherine Grayson Wilkins

Ms. Pamela Wilson

Katherine Pharibe Wise

Anneka Wisker

Tom and Jeanine Wolanski

The Woodward Family

Anonymous (3)

**Friends of
the Piedmont**
\$100 - \$499

Ms. Kimberly Abe

Ms. Nancy Achilles

Paul Adam and Karen
Hunsberger Adam

Ms. Betty Smith Adams

Dr. Samantha Ahdoot

Sarah Allen

Amazon Smile Foundation

Ms. Kathleen M. Ambrose

Mr. John Anderson

Mr. and Mrs. Donald
J. Anderson

Mr. and Mrs. Paul Anikis

Mr. and Mrs. Timothy L. Ashley

Mr. and Mrs. Henry F. Atherton

Ms. Sarah Atkins

Brad and Kendra Atkins

Mr. and Mrs. Philip Audibert

Mr. and Mrs. Mark Augenblick

Backoffice Thinking LLC

Constance S. Barker	Kathy and Keith Boi	Mr. Richard W. Cheek	Mr. Mike Curtin	Mr. and Mrs. Thomas M. deButts	Mr. Fred A. Drunagel and Ms. Elise H. Wilkins
Ms. Sara Lee Barnes	Katie Bovard	Robert M. Cheek	Ms. Kate Cushing		
Mr. Dennis M. Barry	Ms. Louisa Bradford	Mr. and Mrs. Jeffrey Christie	Mr. and Mrs. William H. Dalton	Mr. and Mrs. Thomas Decker	Ms. Victoria Duarte
Ralph and Gwen Bates	Jim and Darlene Brannen	Cibola Farms, Inc.	Ms. Elizabeth E. Daniel	Deep Springs Management LLC	Mr. and Mrs. Morgan Duncan
Mr. and Mrs. Charles M. Baxter	Ms. Inge Braune	Shana Clarke	Liese Dart Hodges and Sven Hodges	Mr. and Mrs. Norman S. Dehart	Ms. Diana C. Dutton
Russell T. Beal and Barbara Bearman	Ms. Melanie Brede	Mr. and Mrs. Michael Clayton	Dr. and Mrs. Robert C. Dart	Ms. Barbara DeRosa-Joynt and Mr. Thomas Joynt	Edgemont Farm LLC
Ms. Karen Beal and Mr. Christopher D. Wolfe	Mr. and Mrs. Harrison P. Bresee, Jr.	Jean and Robert Clements	Ms. Karen Davenport	Dr. Don E. Detmer	Mr. Nicholas Edsall
Ellen and Bob Beard	Svemir Brkic	Sloane Coles	Mr. Jonathan Davis	Dr. and Mrs. Paul Diehl	Mr. Robert Ehinger
Beaver Creek Farm	Julie and Ike Broaddus	Mr. and Mrs. William J. Comstock	Don Dearie	Mr. Richard Dorrier	Eldon Farms LLC
Nancy P. Beaver	Mr. and Mrs. John K. Brown	Ms. Tara Connell			Elk Run LLC
Mr. and Mrs. Randy Beers	Stuart Brown and Katharine Close Brown	Mr. John D. Copenhaver, Jr. and Ms. Marsha A. Childs	PEC'S MAGGI BLOMSTROM, DAWN WILMOT AND SUMMER FELLOW LIAM DOLAN AT THE REMINGTON FALL FESTIVAL. <i>Photo by Hugh Kenny</i>		
Belle Meade	Kathleen Brown	Mr. and Mrs. Bill Couzens			
Mr. John E. Benedict	Ms. Kari Browne	Ms. Pamela J. Covington			
Mr. Scott N. Benedict	Kim Bryant	Dr. and Mrs. Richard S. Crampton			
Mr. Franklin Benfield	Constance F. Bubon	Anne Crawley			
William Bennett	Mr. and Mrs. S. David Burns	Mr. Paul D. Cronin			
Mr. James Bennett	Ms. Susan Butler and Mr. Robert Elder	Candace Carter Crosby			
Ms. Elizabeth C. Bernatowicz	Linda M. Butler	Mrs. Gayle R. Cross			
Ms. Cynthia Beyer	Mrs. Sandra B. Calhoun	Mr. and Mrs. Monty Cross			
Mr. and Mrs. Francis C. Biasioli	William Carney	Mr. and Mrs. William Crowder			
Richard P. Biby	Mr. and Mrs. James R. Carter III	Mr. Steve Crutchfield			
Ms. Phyllis Binder	Robert and Carol Carter	Dr. Tania Cubitt and Mr. Robert Drake			
Jennifer Bisgaier	Dr. and Mrs. Richard H. Catlett	Mr. and Mrs. Raymond P. Cultrera			
Ms. Margot Blattman	Ms. Maria Chapel	Cecilia and James Cumming			
Mr. and Mrs. Charles W. Blessed, Jr.	Ms. Mary O. Chatfield-Taylor				



KARAM EJAZ VOLUNTEERING AT A PEC EARTH DAY TREE PLANTING.

Photo by Bri West

Norma and Doug Epley	Karen Fox and Dirck Holscher	Ms. Iva Gillet
Mr. Donald T. Evans	Ms. Christine Fox	Simon Godwin and Rose Miller
David and Elaina Evans	Mr. Jeffrey L. Freeman and Ms. Lauren Farnsworth	Mr. David Goetz
Ms. Melanie Fein	Mr. James T. Fuller III and Ms. Catherine T. Porter	Ann and Jeff Gonya
Mr. and Mrs. William A. Ferster	Christina Fullmer	Ms. Edith Brodhead Good
Patricia Filer	The Fun Shop	Great Country Farms LLC
Mr. Daniel E. Fisher	Ms. Megan Gallagher	Ms. Katherine Grove
Thomas and Debi Flynn	Ms. Karen Gardner	Mr. Charles A. Grymes
Ms. Mary Foley	Mr. and Mrs. John D. Gavitt	Mr. Russ Guzdar
James G. Foster and Bondele Ellis	Cordelia and James Gelly	Karl Habermeier
Carolyn Fowler	Mr. and Mrs. Christopher Gerow	Mr. and Mrs. Eugene Hack
Mr. Sam Fowler		Mr. and Mrs. Edward A. Halle, Jr.

Ms. Barbara Hamran	Mr. Peter Hoagland and Mrs. Peggy Smith	Ms. Cynthia F. Johnson
Mary M. Hansen	Dr. and Mrs. James Hoecker	Barry and Patricia Johnston
Ms. Stephanie L. Hansen	Jo Ann and Robert Hofheimer	Senator and Mrs. J. Bennett Johnston
Dr. Joyce C. Harman	Sharon D. Holmes	Marshall Jones and Clay Fulghum
Beverly Harner	Daniel Holmes and Brianna West	Mr. and Mrs. Bruce J. Jones
Mr. Timothy Harr and Mrs. Winfield Crigler	Robert Hudson	Marionette and Edward Jones
Drs. Jeffrey and Lucille Harris	Mr. and Mrs. Douglas C. Hume	Nathaniel Karas
Dr. John Bert Harris and Dr. Eleanor Harris	Andrea Humm	Johanna and Richard D. Keeling
Mr. and Mrs. Juergen Hauber	Ms. Linda C. Hunt	Mr. Scott Kelly
Mr. and Mrs. Matthew Haws	Mr. and Mrs. John E. Hunter	Dr. Diane King
Dr. and Mrs. William H. Hay	Hunting Creek Garden Club	Mr. Mike King
Elizabeth Hayes	Mr. Jim Hurley and Ms. Susan Roth	Mr. and Mrs. Nicholas Kingsland
Mr. John T. Hazel, Jr.	Mr. Kirby R. Hutto	Mr. and Mrs. Tom Knaus
Mr. and Mrs. Jeffrey Hedges	Ms. Mary Hutton	Mr. and Mrs. Robert Kott
Achsa Henderson	Mr. John Ince	Mr. Josh Kuhnert
Michael Henke and Judy Campbell	Ms. Linda Y. Ingram	Ms. Barbara Lamborne and Mr. David Fuze
Mr. and Mrs. Christopher Henry	Mr. Dave Jackson	The Land Trust Alliance
Dr. and Mrs. Ken Henson	Charles Jameson	Col. Robert J. Lander, Ret. and Martha F. Cannon
Stephen W. Herholtz and C. Elizabeth Miller-Herholtz	Mark W. and Gail L. Jeffries	Mrs. Catherine C. Larmore
Ms. Susan L. Heytler	Mr. and Mrs. T. Christopher Jenkins	Doug and Liza Larson
Hidden Creek Farm, LLC	Dina Jens	Ms. Aliene M. Laws
Mr. John Hilton	Mrs. Bland Jensen	Anna and Tom Lawson
Ms. Holly C. Hintz and Mr. Tom Banton	Mr. and Mrs. Dean H. Jewett	Arion and John Leahigh
Ms. Gayl Hirschfeld	Ms. Sara Johnson	
	Alisa Johnson	

Mr. Robert Lee and Mrs. Sue Kellon	Mark and Denise Lorenz	Patrice and John Martin	Maggie McElhone	Ms. Jennifer Morrison	Mary R. Peterson
Mr. Douglas H. Lees III	Dr. Thomas Lovejoy	Ms. Jan Massey	Patti McGill Peterson and Kate S. Woodward	Ms. Lucie Morton	Mr. Kyle Pitsor
Mr. Richard Kelso and Mrs. Judith A. Lefferts	Yakir and Claire Lubowsky	Mr. Michael Mastropaolo	Edith and Henry McHenry	The Mountain Fund	Mr. James Poole
Mr. Ernest Lehmann	Deborah Luzynski-Weber and Timothy Weber	Colvin and Mary Ellen Matheson	Ms. Nina C. McKee	Ms. Lisa Mountjoy	Mr. John Praither
Pam and Tim Lettie	Mr. and Mrs. Hunt Lyman	Mr. and Mrs. Charles T. Matheson	Mr. and Mrs. William R. Mckey	Ms. Helen Ida Moyer	Mr. and Mrs. Stephen C. Price
Mr. and Mrs. Keith D. Levingston	David Lyne	Mr. and Mrs. Robert Mayo	Frank R. and Patty McLaughlin	Lonnie Murray	Charles Tiffany Richardson Family Fund of the Community Foundation for Loudoun and Northern Fauquier Counties
Cheryl Lewis	Mr. and Mrs. Talbot Mack	Mrs. Joann S. Mazzetta	Mr. Andrew McRoberts	Matthew and Mary Murray	Mr. and Mrs. Stephen Murray
Mr. and Mrs. William H. Lewis Jr.	Mr. and Mrs. Justin Mackay-Smith	Mr. and Mrs. Richard Mazzucchelli	Amy Meade	Mr. and Mrs. Stephen Murray	Mr. Norman Myers
Mr. and Mrs. Andrew R. Lewis	Mr. and Mrs. David W. Mailler	Dr. Anthony L. McCall and Ms. Madelyn F. Wessel	Mr. Neil Means	Lynn and William Nelson	Nancy and Leonard Quaranto
Laura and Bud Lieberman	Mr. Redmond L. Manierre and Ms. Catherine Boswell	Mr. and Mrs. Lloyd J. McCliggott, Jr.	Howard and Candy Means	Ms. Jane W. Nelson	Chip and Mary Queitzsch
Dr. and Mrs. Frederick Lillis	Mikel Maron	Mr. and Mrs. Luke McCormack	MEDIC	Network For Good	Paula Rabkin
Mr. and Mrs. Graham Lilly	Mr. John F. Marshall and Mrs. Cri Kars-Marshall		Ms. Janel T. Melgaard	Mrs. Jane M. Noland	Mr. and Mrs. Tim Radford
			Dr. and Mrs. Randolph V. Merrick	Mrs. Vibeke Ober	Ragged Mountain Running Shop
			Ms. Ramsay Metcalf	Old Bust Head Brewing Company LLC	Sunder Rajan
			Ms. Elizabeth K. Meyer	Jackie and Donald Pamentor	Taylor Randolph
			Timothy and Virginia Michel	Dr. Helen Parker and J.B. Riggs Parker	Sandy Randolph
			Mr. Richard Miller and Dr. Elaine Lutz	Mr. John R. Parks	Ms. Judy Rasmussen
			Ellen Percy Miller and Tom Miller	Ms. Linda Parrish	Mr. Edward M. Reardon
			Mr. and Mrs. Robert B. Miller	Kelli Patterson	Rebecca's Natural Food
			Mr. and Mrs. William G. Miller	Susan and L. F. Payne	Dr. and Mrs. John R. Redick
			Mr. William Mohrman	Scott Pearce and Rebecca Lindsay	Paul Reisler and Cheryl Toth
			Deborah Moore	Mr. and Mrs. David Perdue	Mr. and Mrs. Peter G. Rice
			Mr. and Mrs. James Moorman	Ms. Christine H. Perdue Smith	Tom and Kelicia Rice
			Ms. Janet Moran	Ms. Shelley Perry	Robin Rider
			Elizabeth C. Morgan		Andrea Gilman and Richard Riemenschneider
					Sandra and Robert Hodge

THE VIRGINIA DEPARTMENT OF FORESTRY CONDUCTED A PRESCRIBED BURN AT PIEDMONT MEMORIAL OVERLOOK NEAR SKY MEADOWS STATE PARK IN MARCH 2022. *Photo by Hugh Kenny*



Robert W. Baird & Co., Inc	Mary Stettinius	Mr. and Mrs. William Tompkins	Ms. Diana K. Weatherby	Lawrence M. Zippin and Gretchen Gehrett	Ms. Kat Imhoff and Mr. John Moore
Evelyn M. Rollison	Dr. and Mrs. Eric Steuer	Mr. and Mrs. Amadeo C. Tortorella	Mr. and Mrs. Matthew Weeden		
Mr. and Mrs. Richard B. Rose	Alice Stewart	Ms. Betty A. Tribble	Mr. Glenn Weaver	Anonymous (6)	Betsy S. Kleeblatt
Diane Rosin and Mark Okusa	Jim Stone	Mr. John L. Trimmer	Alice Gorton West and Curtis West	In-Kind Donors	Elizabeth F. Locke and John R. Staelin
Colin and Andrea Rosse	Ms. Susan Strittmatter	Ms. Francine L. Trull	Ms. Lynda S. White	Ms. Lisa Abeel	John and Susan McCarthy
Mr. and Mrs. Harry Russell	Ms. Sabrina Sutton	John Tschirky	Mr. and Mrs. Craig White	Ms. Catherine Adams	Mr. and Mrs. Grosvenor Merle-Smith
Randall G. Salzman	Svatos Family Fund	Mr. Carter H. Tucker and Mrs. Peggy Tucker	Whitfield Giving Fund	Drs. Kent Allen and Rae Stone	Jeff and Julie Morrill
Ms. Laura Schliesske	Ms. Frances Symes	Mr. and Mrs. Thomas Tuttle	Sylvia Whitt	Chuck and Deanna Akre	Oak Spring Garden, LLC
Mr. Claude M. Schoch and Ms. Andrea Ross	Ms. Merriellou Symes	Mr. Jeff Twining	Ellen G. Wilbur	Mr. Philip D. Bermingham	Mr. Patrick O'Connell
Mr. William Scholten	Mr. and Mrs. Harrison Taylor	Irene Upshur	Wild Roots Apothecary	Blue Rock Inn	Karin and Mark Ohrstrom
Peter Scott	Ms. Carole Taylor	Valentines Bakery and Meats	Mr. William C. Wilkinson III	Brown Advisory	Ms. Jean Perin
Ms. Mara Seaforest	Mr. and Mrs. Stewart F. Taylor	Mrs. Mario Valmarana	Mr. Glenn Willard	Anne and Sean Clancy	Possum's Store
Mr. and Mrs. Peter Sewell	Ms. Abigail Taylor	Ms. Susan Van Den Toorn	Mr. and Mrs. David F. Williams	Mr. and Mrs. John Coles	Mr. Fritz Reuter
Mr. and Mrs. V. R. Shackelford III	Mr. and Mrs. Michael J. Terseck	Theo van Groll and Charlotte P. Black-van Groll	Mr. Roger Williams	Sir Peter Crane and Lady Crane	John Richardson
Ms. Barbara Sharp	The Bench Trail Fund	Berend and Melanie van Roijen	Mrs. Robin Williams	Mr. William J. Curtin III	Ms. Barbara S. Riggs
Mr. and Mrs. Sidney Silver	Mr. and Mrs. Eugene Theroux	Virginia Vinegar LLC	Casey Wisch	Steven J. Dahllof and Thomas S. Foster	Shenandoah River Keepers
Mr. Michael Simpson and Mrs. Oya Simpson	Thomas Jefferson Foundation Inc.	Ms. Karen Wachtmeister	Margaret Douglas Wise Fund	Mr. Douglas Dear	Thomas Jefferson's Poplar Forest
Madeline and Mark Skinner	Mr. Peter M. Thompson	Ms. Suzanne Wade	Kate and Jeb Wofford	Dr. and Mrs. Paul Diehl	Vintage Yacht Charter
Mrs. Jocelyn Sladen	Mr. and Mrs. W. M. Thompson Jr.	Mr. and Mrs. William Waite	Isabella Wolf	Mr. and Mrs. Robert Dove	Virginia Museum of Fine Art
Mr. James Slaughter	John Rice and Babette Thorpe	Wakefield School	Thomas and Barbara Wolf	George and Mancie Ohrstrom	Carter and Erica Wiley
Mr. and Mrs. G. D. Smith	Mrs. Caroline Timlin	Mr. and Mrs. Frank S. Walker Jr.	Cheri and Martin Woodard	Mr. and Mrs. Michael Gewirz	Mrs. James L. Wiley, Jr.
Mr. Pete Smith and Ms. Marcia Marsh	Toddz, Inc.	James and Teresa Walker	Ms. Maggie Woodward	Mr. and Mrs. Wayne Gibbens	Dr. William Wolf and Mrs. Elizabeth Guarisco Wolf
Mr. and Mrs. William H. Speiden	Ms. Jane Tolbert-Rouchaleau	Wal-Mart Distribution Center - 7016	Kim Woodwell	Mr. and Mrs. Jimmy Harris	Mr. William Woodward
Mrs. Anne Stelter	Mr. and Mrs. Vincent C. Tompkins	Ms. Jennifer Wampler	Ms. Paula Wolferseder Yabar	Mr. John L. Helmly and Mrs. Caroline M. Nash	Anonymous
			Dr. and Mrs. Harold E. Young		
			Gary and Jene Younkin		

PEC Staff

Land Use

Gem Bingol, LOUDOUN COUNTY

Julie Bolthouse, DEPUTY DIRECTOR OF
LAND USE / FAUQUIER COUNTY

Wyatt Burtshell, LAND USE COORDINATOR

Adam Gillenwater, SENIOR POLICY MANAGER
/ CULPEPER, GREENE, MADISON COUNTIES

Dan Holmes, DIRECTOR OF STATE POLICY

Kristie Kendall, HISTORIC PRESERVATION COORDINATOR

Kevin Kask, LAND USE COORDINATOR

Peter Krebs, ALBEMARLE-CHARLOTTESVILLE
COMMUNITY ORGANIZER

Evan McCarthy, CLARKE & LOUDOUN COUNTIES

Don McCown, ORANGE COUNTY

Damien Sharp, PRESERVATION OUTREACH
REPRESENTATIVE, ALBEMARLE

Land Conservation

Maggi Blomstrom, CULPEPER COUNTY /
RAPPAHANNOCK-RAPIDAN CONSERVATION INITIATIVE

October Greenfield, WILDLIFE HABITAT
RESTORATION COORDINATOR

Hallie Harriman, CLARKE, LOUDOUN &
NORTHERN FAUQUIER COUNTY

Peter Hujik, MADISON & ORANGE COUNTY

Kat Imhoff, SENIOR CONSERVATION FELLOW

Mike Kane, DIRECTOR OF CONSERVATION

Rex Linville, ALBEMARLE & GREENE COUNTY

Laura O'Brien, RAPPAHANNOCK COUNTY

Valerie Peterson, DEPUTY DIRECTOR OF CONSERVATION

Farms and Food

Dana Melby, COMMUNITY FARM MANAGER

Mitchell Pittman, FARM PRODUCTION ASSISTANT

Pete Walton, FARM & PROPERTY SPECIALIST

Outreach and Communications

Sophia Chapin, COMMUNICATIONS SPECIALIST

Robin Cross, FELLOWSHIP & VOLUNTEER COORDINATOR

Hugh Kenny, MULTIMEDIA COMMUNICATIONS SPECIALIST

Watsun Randolph, SENIOR GIS ANALYST

Cindy Sabato, COMMUNICATIONS ADVISOR

Marco Sánchez, DEPUTY DIRECTOR OF
OUTREACH & COMMUNICATIONS

Bri West, DIRECTOR OF OUTREACH & COMMUNICATIONS

Information Systems and Technology

Karen Hunsberger Adam, DATA COORDINATOR

Tiffany Parker, DIRECTOR OF INFORMATION SYSTEMS

Membership and Advancement

Kendra Atkins, ADVANCEMENT ASSISTANT

James Bussells, ADVANCEMENT & EVENTS ASSISTANT

Karissa Epley, ADVANCEMENT ADVISOR

Gertraud Hechl, MAJOR GIFTS

Doug Larson, ADVANCEMENT ADVISOR

Nora Seilheimer, DIRECTOR OF ADVANCEMENT

Douglas Stewart, GRANTS MANAGER

Finance and Administration

Elizabeth DiGiulian, FINANCE ANALYST

Cindy Donaldson, SENIOR ACCOUNTANT

David Fredenburgh, DIRECTOR OF FINANCE & ADMINISTRATION

Executive

Chris Miller, PRESIDENT

John McCarthy, SENIOR ADVISOR &
DIRECTOR OF STRATEGIC PARTNERSHIPS

Leigh Ross, LEGAL ASSISTANT AND RECORDS MANAGER

Dawn Wilmot, EXECUTIVE ASSISTANT

PEC Board of Directors

*This list includes Board members who served at any
time between January 2021 and January 2022.*

Officers

George Ohrstrom, II, CO-CHAIR

Jean Perin, CO-CHAIR

Mark Ohrstrom, VICE CHAIR

Alton Keel, SECRETARY

David Aldrich, TREASURER

Albemarle County

John Birdsall, III*

Chris McLean*

Hamilton "Chip" Moses III*

Nora Seilheimer**

Clarke County

Susan "Sisi" Gallagher

Cleo Smart Gewirz

George Ohrstrom II*

Laurie Volk

Culpeper County

Tania Cubitt

John Grano

Seth Heald*

Linda "Boo" Ingram*

Fauquier County

Mimi Abel Smith*

Steve Dahllof

George Grayson

James Kleeblatt*

Mark Ohrstrom*

Jean Perin*

Marie Ridder*

Chloe Squires

Lynn Wiley*

Virginia Wilson*

Greene County

Roy Dye*

Jim Hurley

Alton Keel*

George Overstreet*

Loudoun County

Brad Bondi

Eugene Gulland*

Bonnie Mattingly*

Eleanor Porter Morison

Natalie Pien

Madison County

Robert Bernard*

Orange County

Jim Collins*

Roy Jacobson

Rappahannock County

David Aldrich*

Leslie Cockburn

Helen DuBois*

** Denotes 2021 Executive
Committee member*

*** Resigned from Board in
March 2022 to become PEC
Director of Advancement*

In Memory

2021 witnessed the passing of several passionate advocates and effective leaders for the natural resources, rural economy, history and beauty of this region. All will be sorely missed.



Margaret "Peggy" Richardson

PEC BOARD TERM: 2008 - 2021

Margaret "Peggy" Richardson was a strong supporter of PEC, of conservation, and of good government and good governance. As Chair of the Nominations and Governance Committee, she continually worked to strengthen the PEC Board of Directors and provide a structure of committees that encouraged board engagement. A distinguished attorney and former Commissioner of the Internal Revenue Service, she provided valuable legal counsel through a series of policy, litigation, and conservation challenges ranging from transmission lines through her community to federal policy on tax incentives for conservation to the enforcement of conservation easements. What endeared Peggy to staff and board members, though, was her wise, calm, and friendly engagement with all. Her needlepoint in the midst of PEC Board meetings created a sense of intimacy and humanity that she extended to each of us as colleagues, family and friends.



Marcia de Garmo

PEC BOARD TERM: 1995 - 2011

Marcia was a friend, colleague, and strategic partner in all of what PEC has accomplished over the past three decades. Whether conservation, planning, transportation reform, or state environmental policy, Marcia was on the leading edge of advocacy and community organizing in Loudoun, the Piedmont, the Washington metropolitan area and the Commonwealth of Virginia. Marcia led the formation of the Virginia League of Conservation Voters, the Voters to Stop Sprawl in Loudoun County, and Citizens for Loudoun's Future. She was also a strong supporter of the Coalition for Smarter Growth and the Route 50 Corridor Task Force that conceived and supported the implementation of the Route 50 Traffic Calming Plan. Marcia's determination and energy were legendary, and her dedication remains an inspiration to many as a life given to service of the community.



Courtesy of the Riddell family

Mildred Gulick Riddell

PEC BOARD TERM: 2007 - 2009

Mildred Riddell served on PEC's Board of Directors and was a strong supporter of the Julian Scheer Fauquier Conservation Fund. An ardent outdoor education coach and advocate, she lived in Casanova, Fauquier County, at her late parents' Redwood Farm, where her passion for farmland, woodlands, streams, and flora and fauna began. She became a prudent environmentalist in the 1970s and was an early proponent of preserving riparian stream buffers to improve water quality in the Chesapeake Bay watershed. She also served on the board of Citizens for Fauquier County and the advisory board of the Warrenton Antiquarian Society. Redwood Farm's almost 200 acres are protected as a conservation district by the Virginia Outdoors Foundation.

In Memory



Photo by USAF Tech. Sgt. Brigitte N. Brantley

Senator John Warner

Senator John Warner was a bipartisan leader in conservation and environmental protection and a long-time member and friend to PEC. A champion of the Route 50 Traffic Calming project from Gilberts Corner to Upperville, The Journey Through Hallowed Ground National Scenic Byway and National Heritage Area, Sen. Warner was a steadfast supporter of the preservation of the Piedmont as a national resource. He was also a leader on the restoration of the Chesapeake Bay and the conservation of lands within the Chesapeake Bay watershed. As an early sponsor of the Chesapeake Bay Agreement in the Senate, he worked to set up the extraordinary collaboration between five states, the District of Columbia, and federal government over the past 30 years. Senator Warner recognized the real and imminent challenge of climate change and was an advocate for federal, state and private action for mitigation and resiliency.



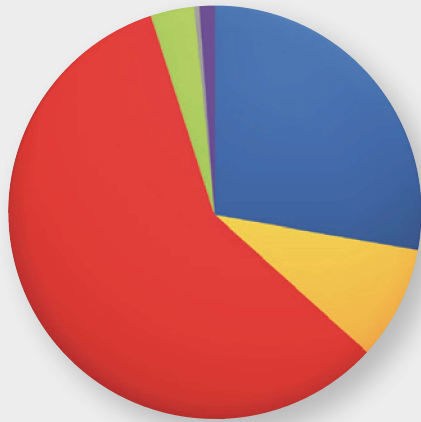
Photo by George Ohrstrom II

Magalen "Maggie" Bryant

PEC and the conservation movement lost a major supporter with the death of Magalen Ohrstrom "Maggie" Bryant. Maggie was a practitioner of land conservation, preservation, and restoration, including on her own farms in Virginia and Mississippi. She was Chair of the National Fish and Wildlife Foundation from 1990-1999 and active with many wildlife organizations in the United States and Africa. Her encouragement and support of PEC's efforts to expand and accelerate conservation in Virginia was unflagging. Working with former PEC Chairs Charles Whitehouse and Eve Fout, she advocated for improved incentives for donation of conservation easements.

2021 Financial Report

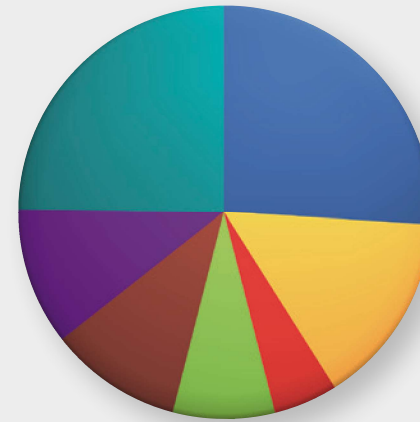
Sources of Organizational Support



Individuals	\$ 1,515,460	28.1%
Government	455,526	8.5%
Foundations, Businesses and Institutions	3,152,836	58.5%
Special Events, Net	182,563	3.4%
Investments, Other	22,927	0.4%
Real Estate Transactions	62,500	1.2%
Total	\$ 5,391,812	100%

The above figures do not include the activities of the Coalition for Smarter Growth, a division of PEC. Copies of PEC's audited financial statements and IRS forms 990 are available upon request. Copies of our most recent statements may also be found at PEC's website at www.pecva.org/donate. For more information, please contact PEC's accounting office at (540) 347-2334.

Program and Operating Expenditures



Conservation, Stewardship and Habitat	\$ 1,374,673	26.2%
County Issues and Planning	785,128	15.0%
Policy*	246,149	4.7%
Farms and Food	420,113	8.0%
Outreach and Education	545,904	10.4%
Development	568,065	10.8%
Administration	1,301,861	24.8%
Total	\$ 5,241,893	100%

* Reflects regional and state-level work on policy related to transportation, energy, air quality, water quality, telecommunications, land conservation and land use



Post Office Box 460 • Warrenton, VA 20188

Non-Profit Org.
U.S. Postage
PAID
PPCO

Headquarters Office

P.O. Box 460
45 Horner Street
Warrenton, VA 20188
540.347.2334

Charlottesville Office

410 East Water Street, Suite 700
Charlottesville, VA 22902
434.977.2033

Orange Office

11395 Constitution Hwy
Montpelier Station, VA 22957
540.347.2334

Find contact information for
PEC staff throughout our region
at www.pecva.org

DARK HOLLOW FALLS,
SHENANDOAH NATIONAL PARK.
Photo by Hugh Kenny

PRINTED BY T & N Printing, Charlottesville, VA
DESIGNED BY Keith Damiani