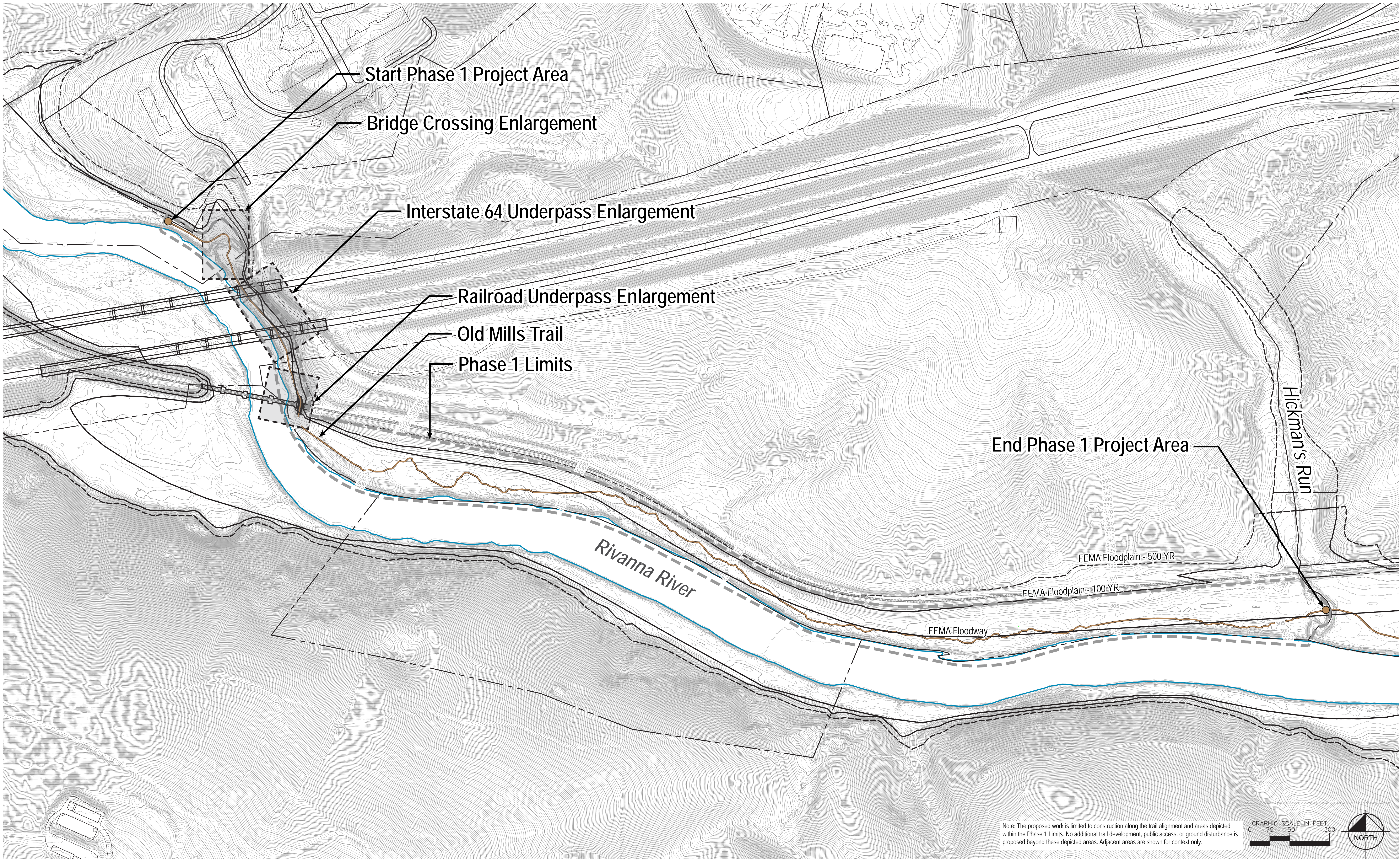


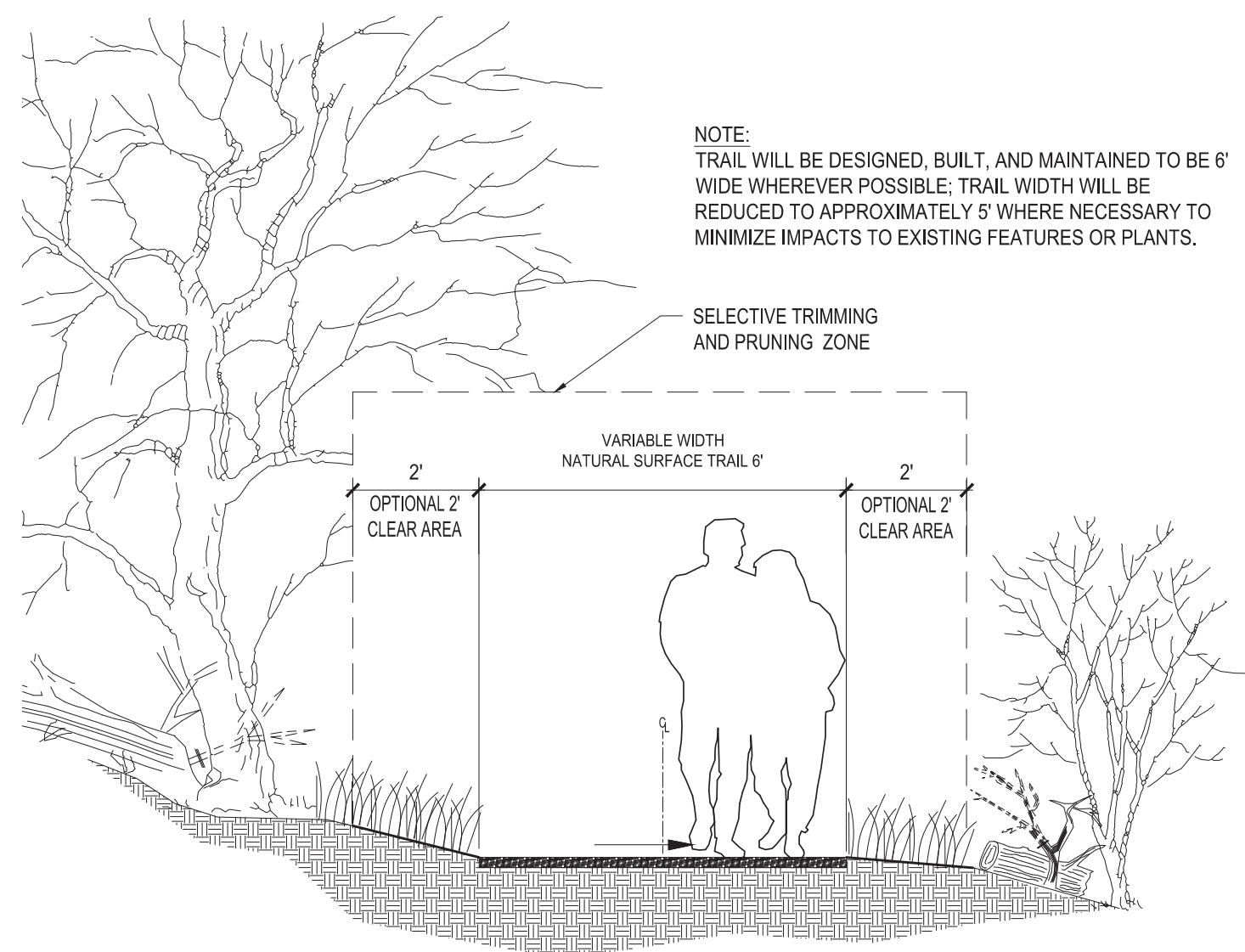
Note: The proposed work is limited to construction along the trail alignment and areas depicted within the Phase 1 Limits. No additional trail development, public access, or ground disturbance is proposed beyond these depicted areas. Adjacent areas are shown for context only.



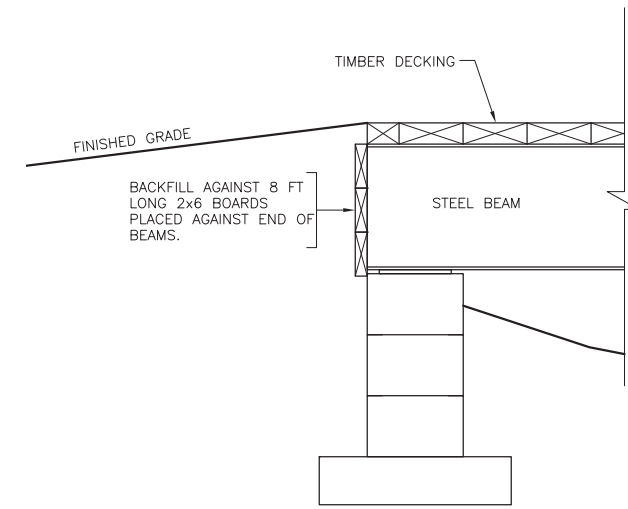


Note: The proposed work is limited to construction along the trail alignment and areas depicted within the Phase 1 Limits. No additional trail development, public access, or ground disturbance is proposed beyond these depicted areas. Adjacent areas are shown for context only.

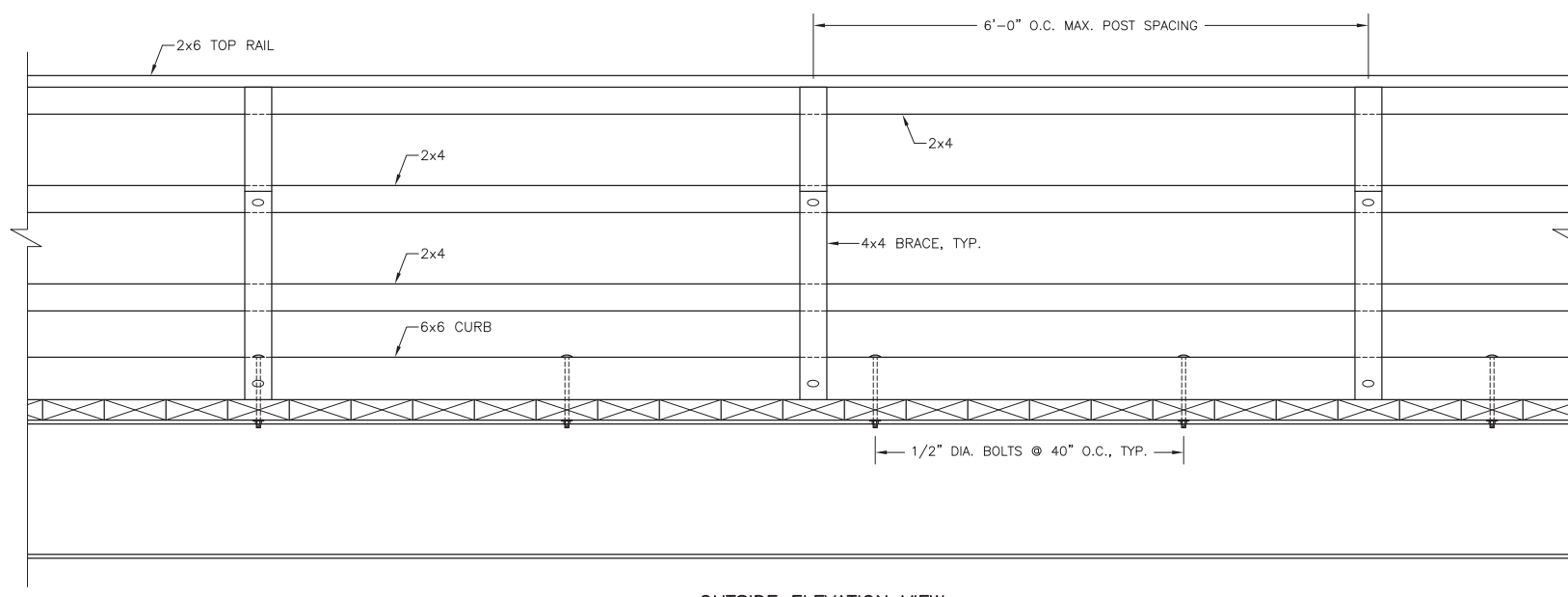




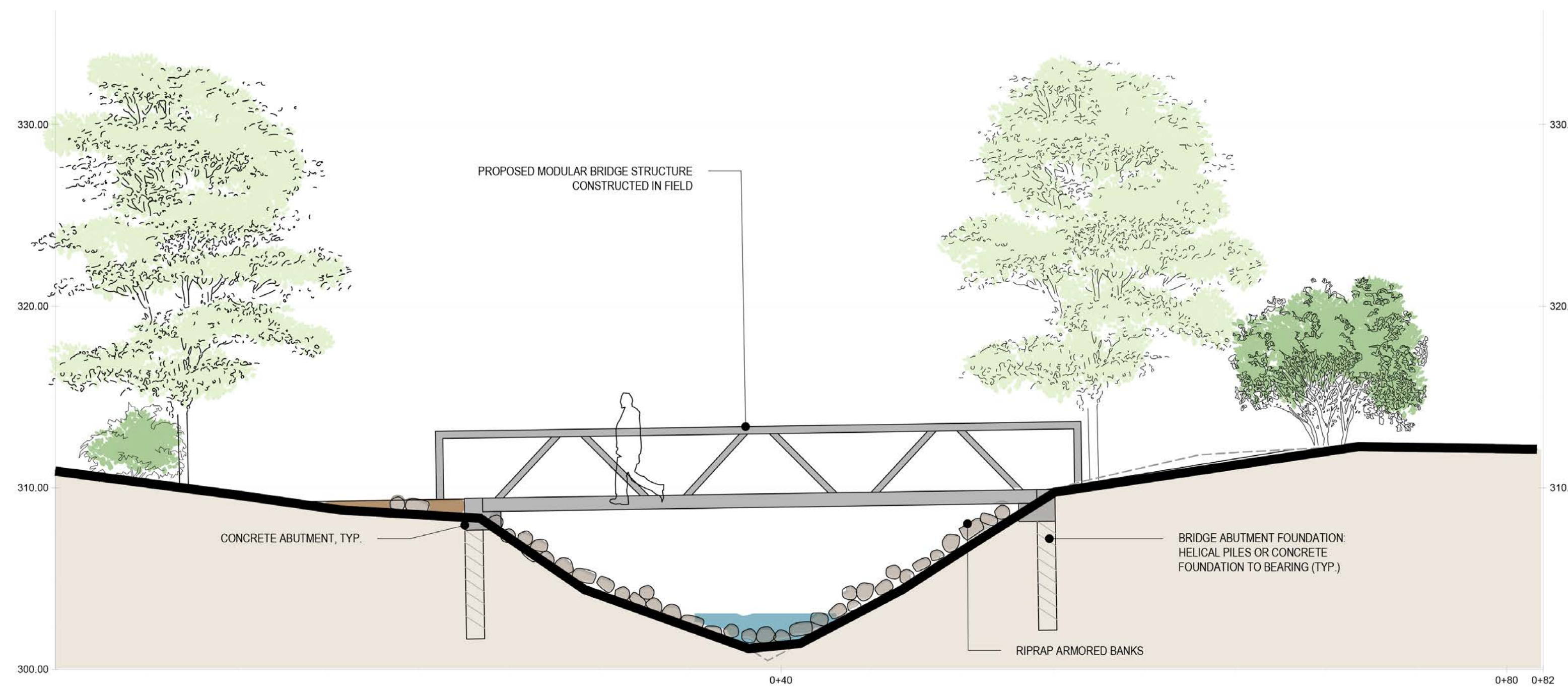
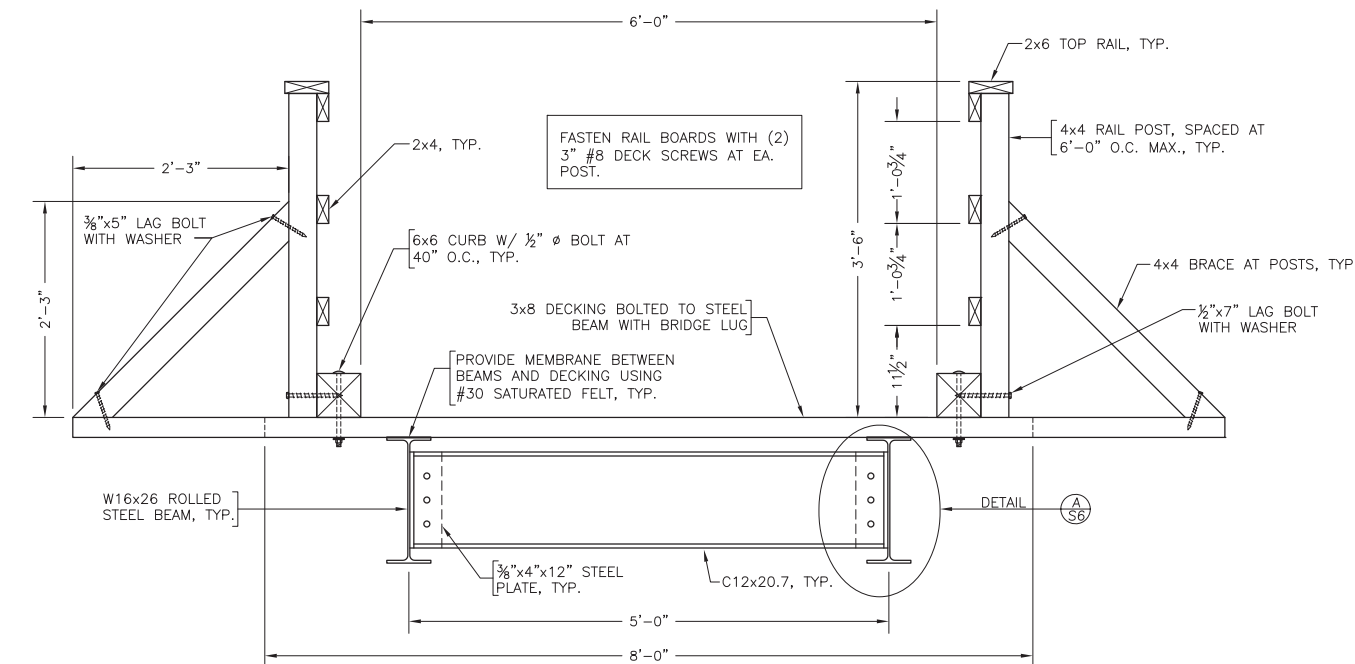
Typical Trail Section Scale: 1/2"=1'



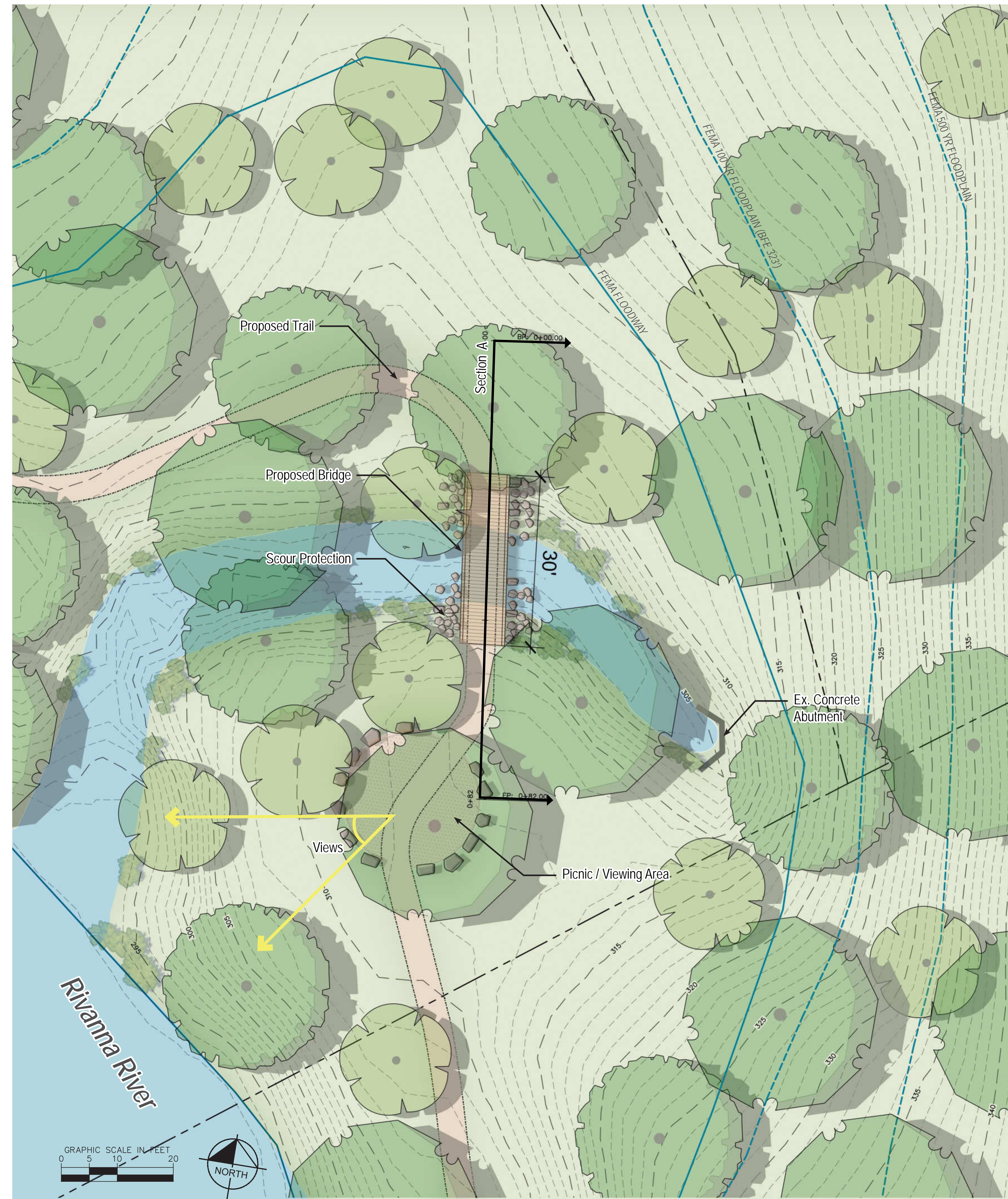
Typical Abutment Backwall Scale: 1"=1'

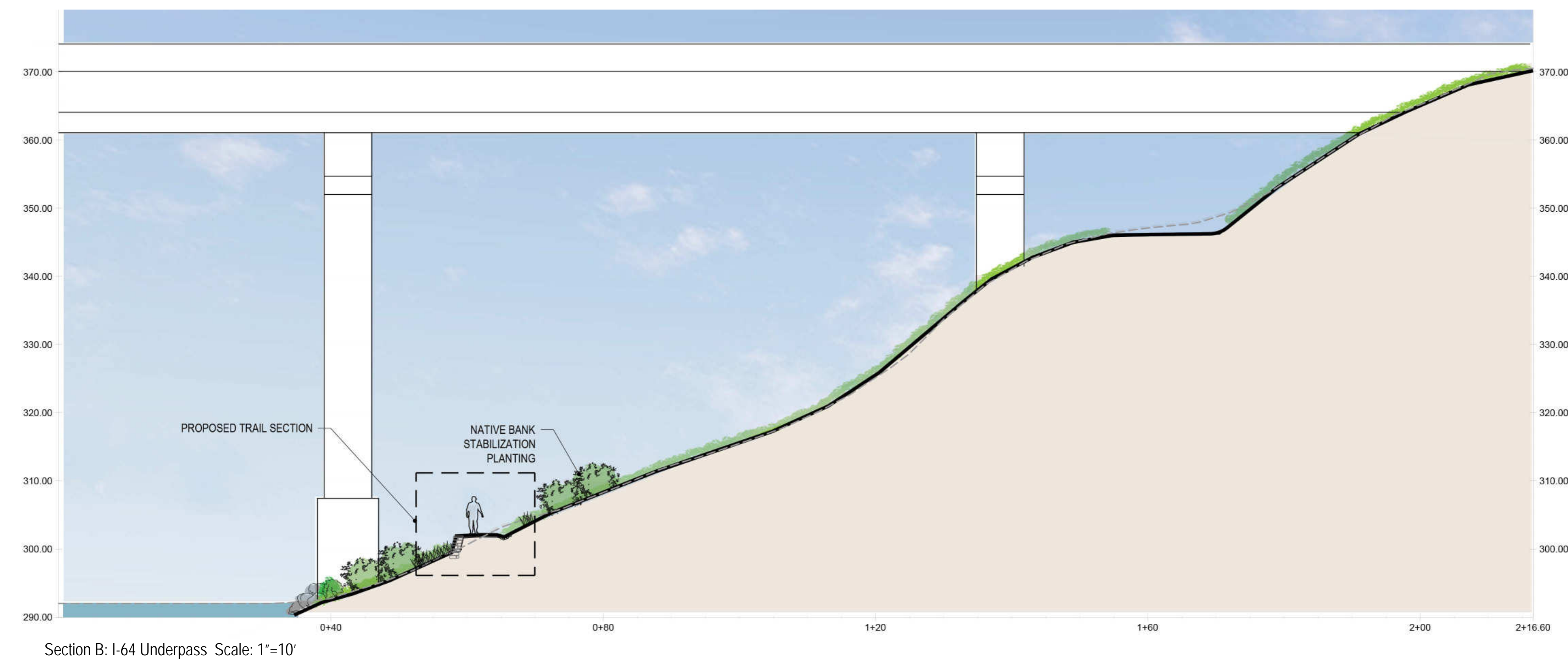
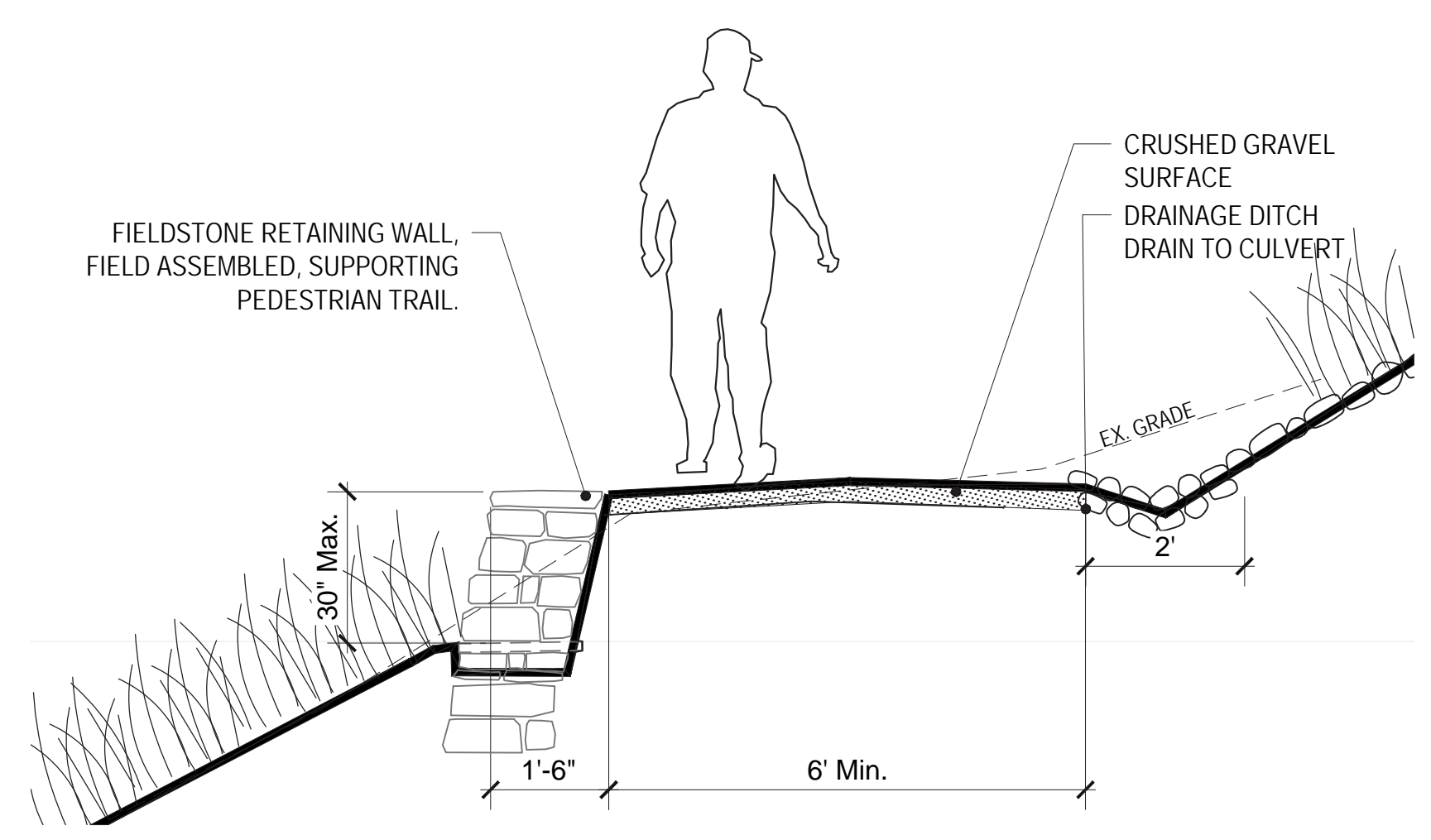
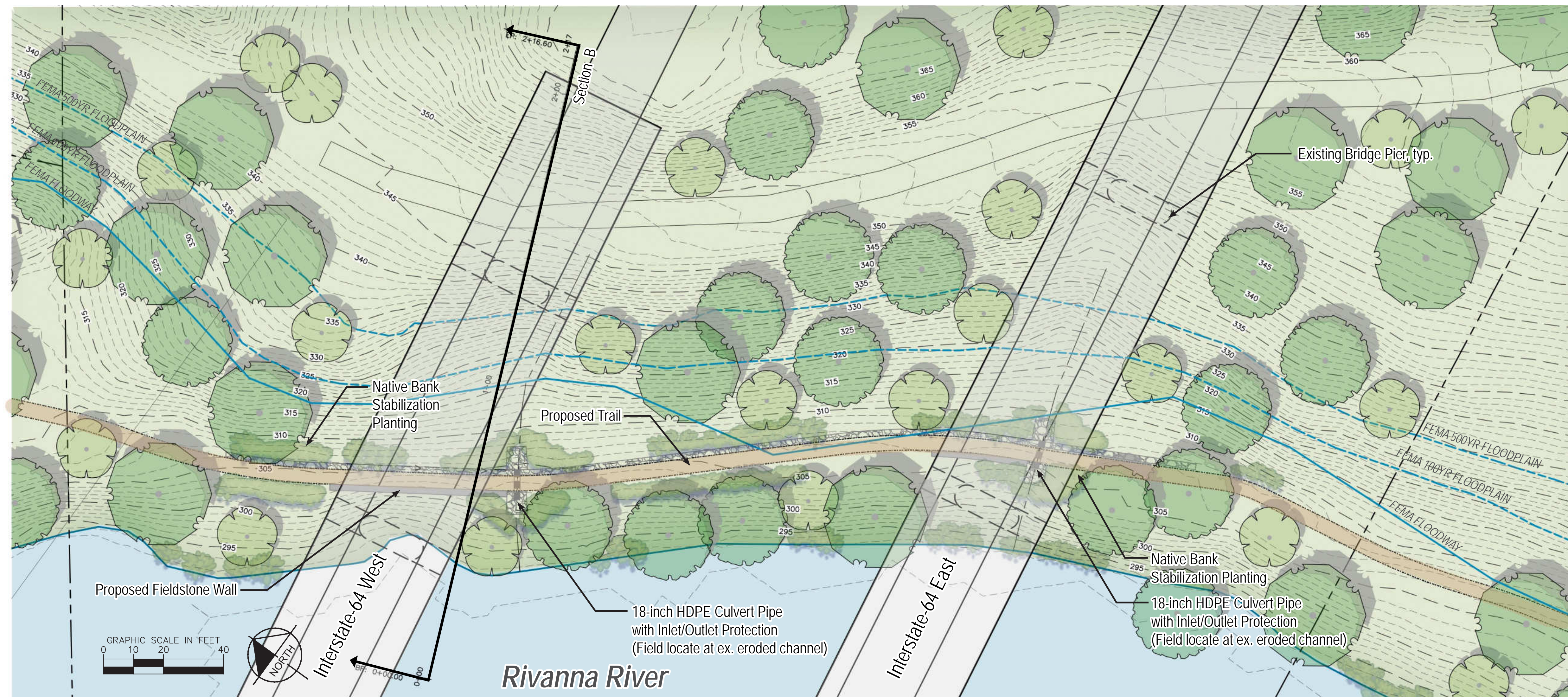


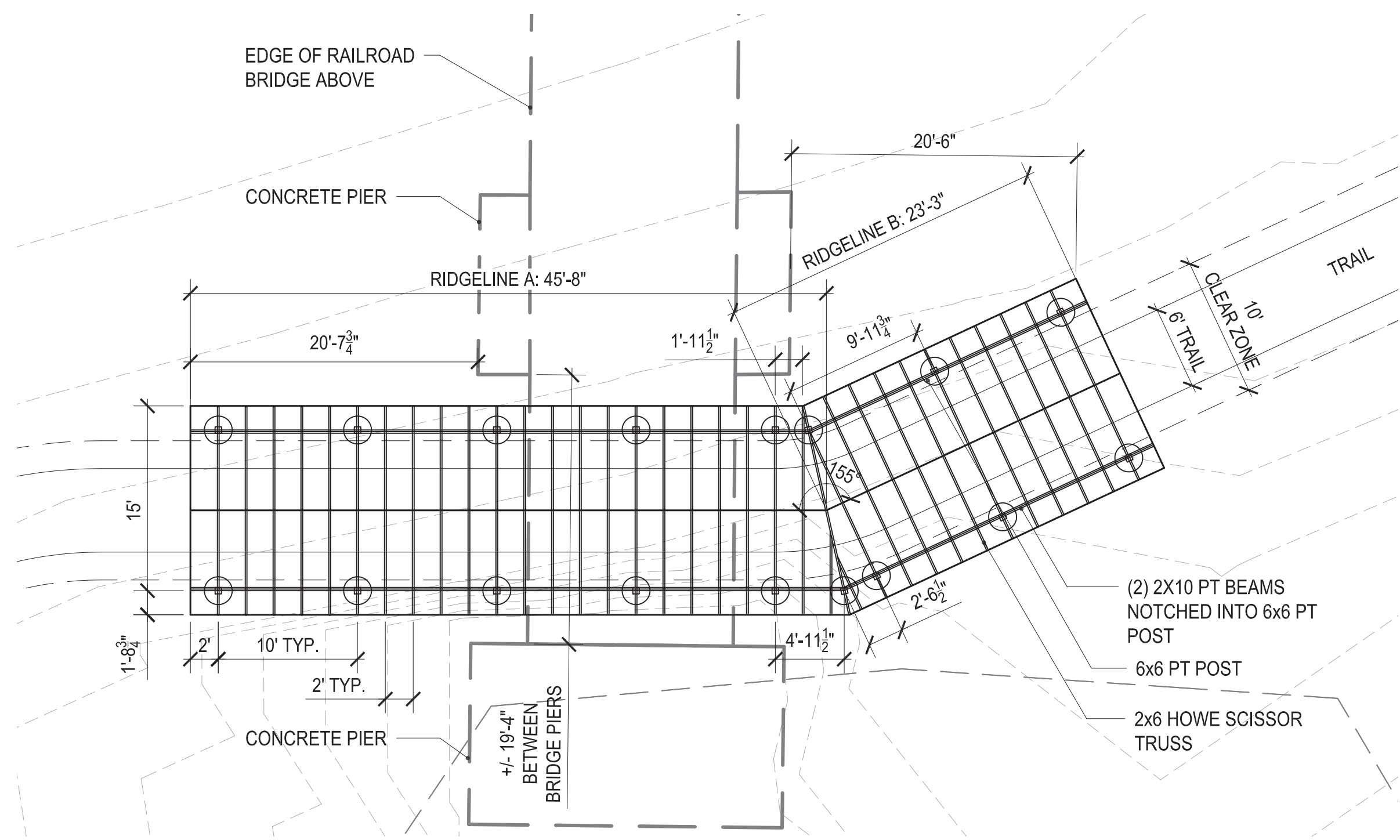
Typical Bridge Section Scale: 1"=1'



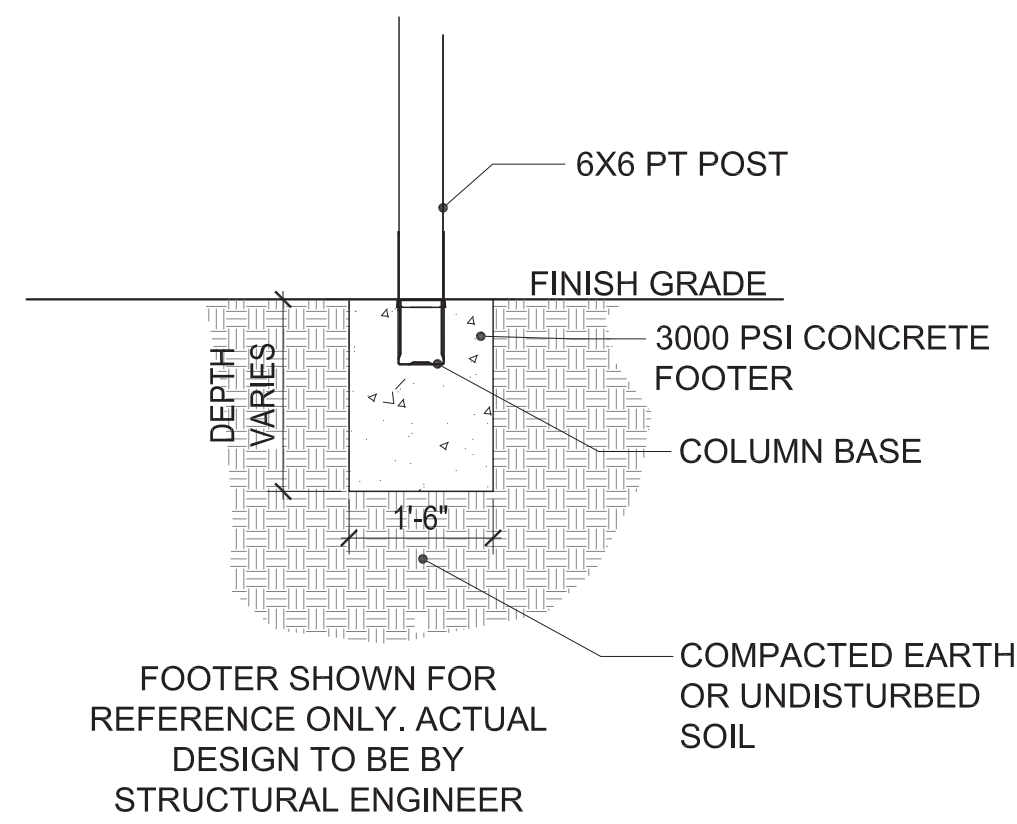
Section A: Bridge Crossing Scale: 1/4"=1'



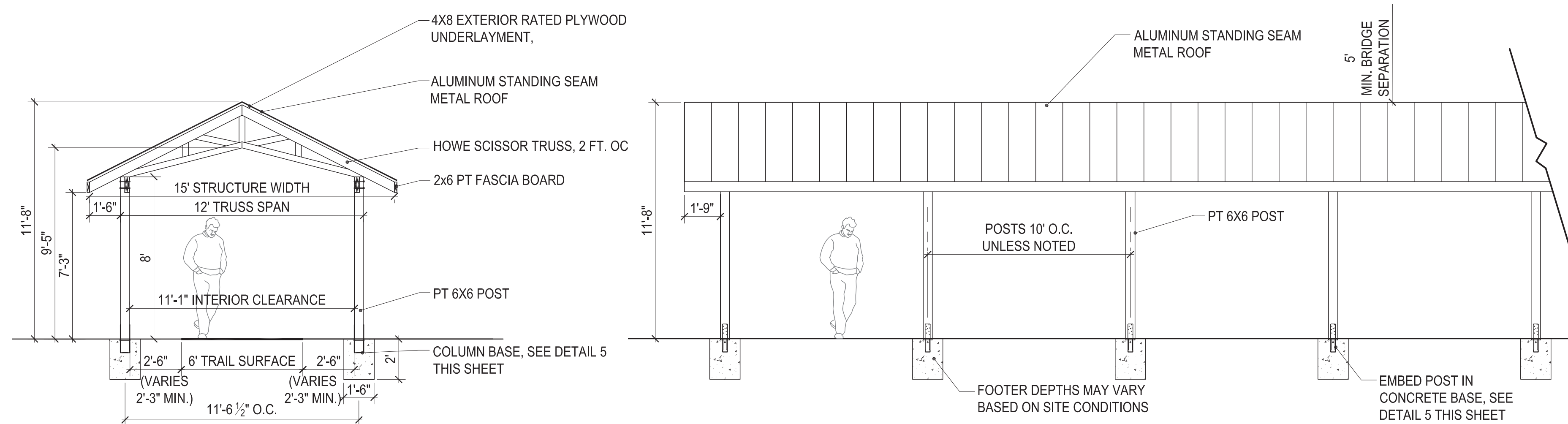




Plan of Railroad Underpass Structure Scale: 1/4"=1'

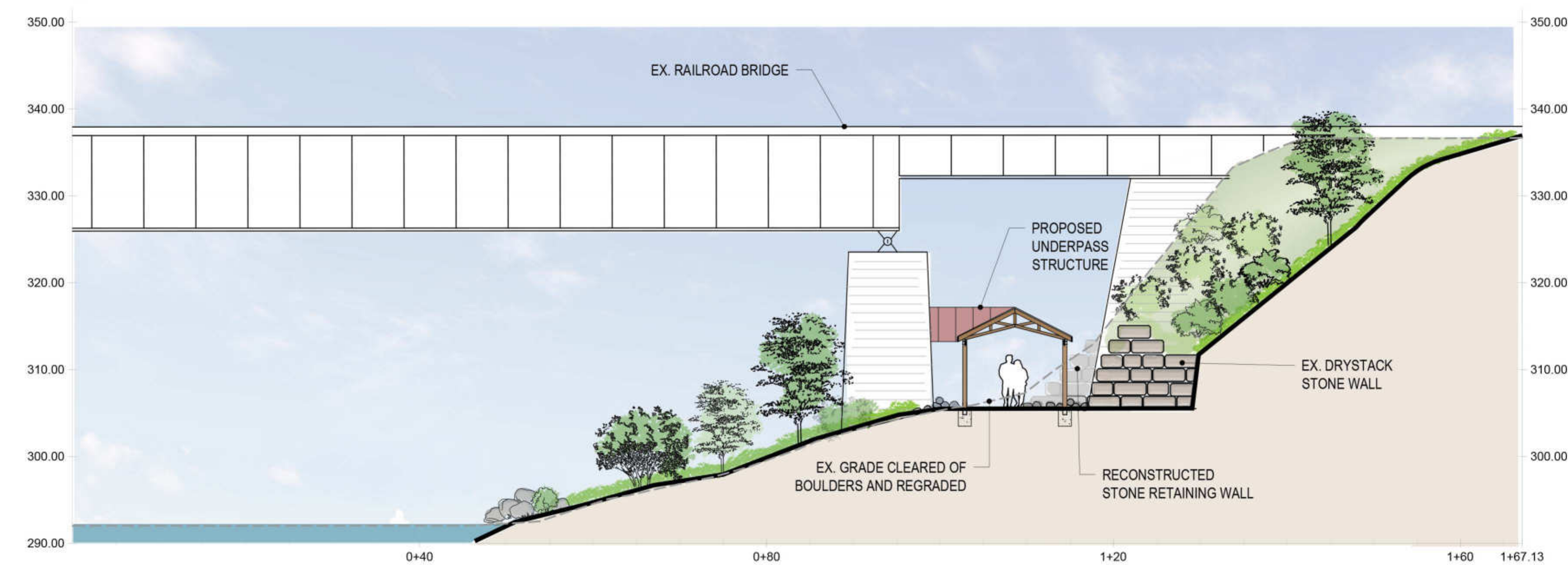


Structure Footing Scale: 1/2"=1'

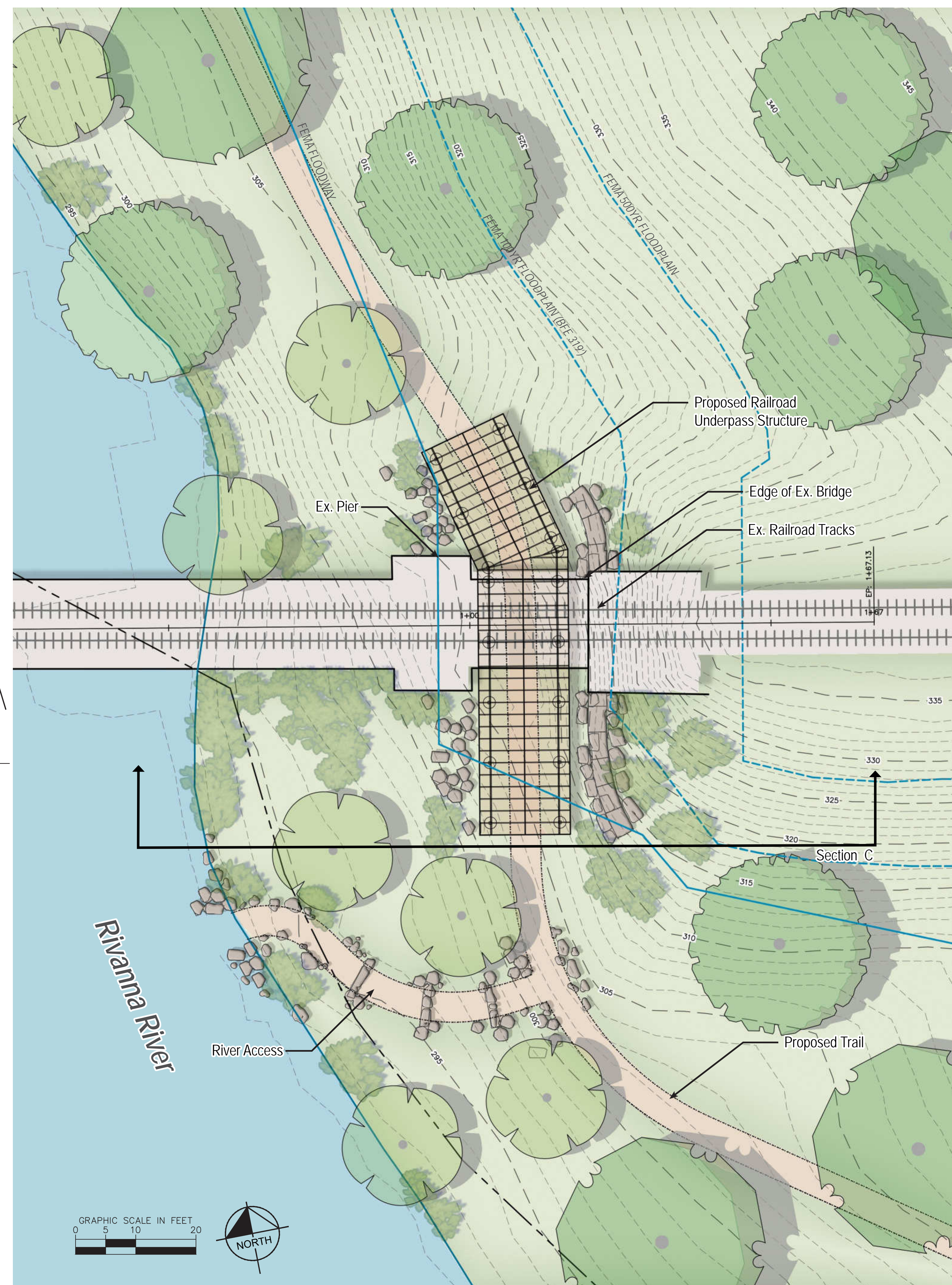


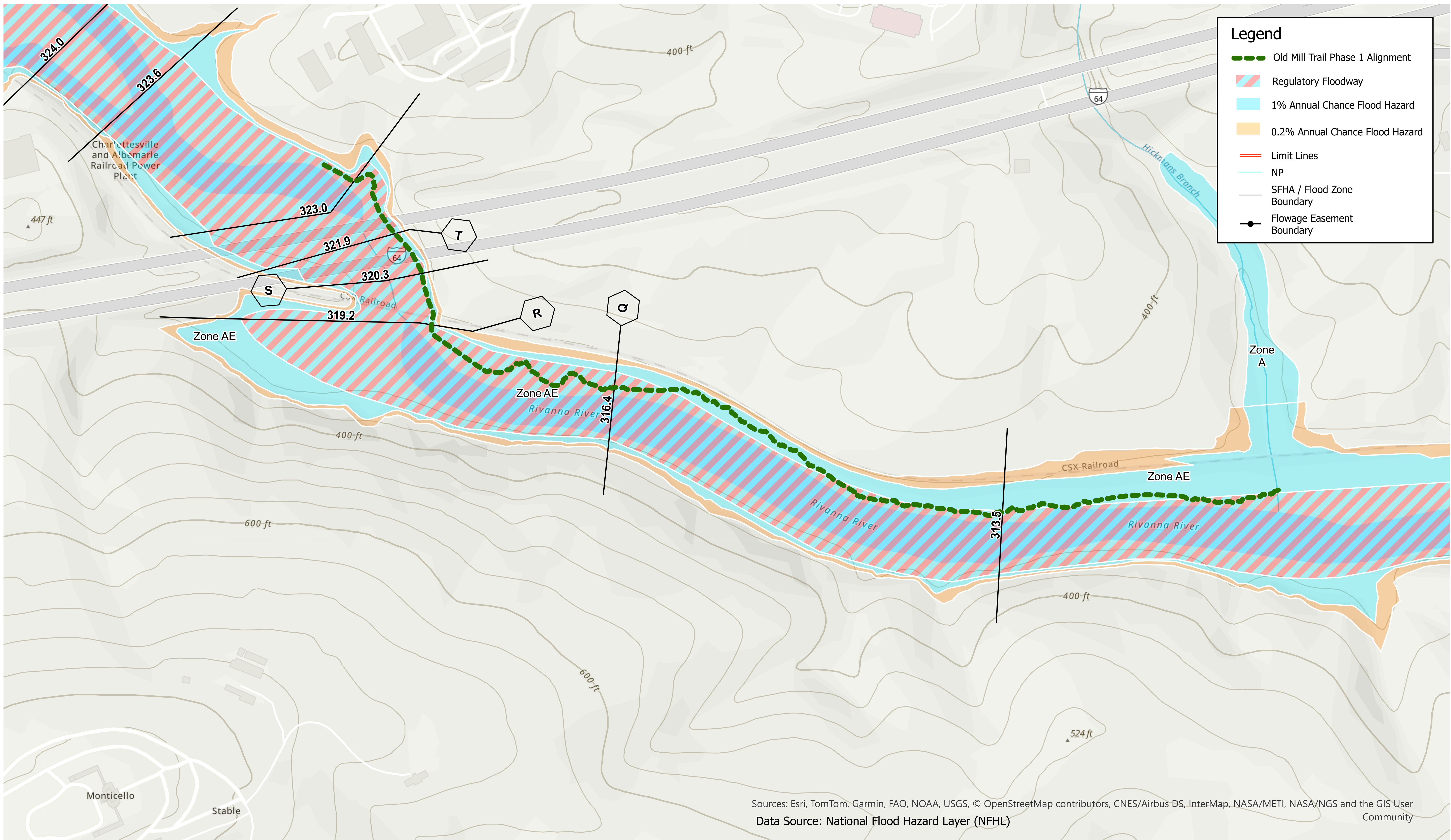
Detail Section of Railroad Underpass Structure Scale: 1/4"=1'

Elevation of Railroad Underpass Structure Scale: 1/4"=1'



Section C: Railroad Underpass Structure Scale: 1"=10'





Old Mills Trail Phase 1 - Pantops to Hickmans Branch

Albemarle County, VA

OPINION OF PROBABLE COST

Prepared By: Kimley Horn Associates, Charlottesville, VA

4/5/2025

Key	
LS= Lump Sum	SF= Square Foot
AC= Acre	LF= Linear Foot
EA= Each	FF= Face Foot
CY= Cubic Yard	

1	Phase 1 Project Soft Costs	UNIT	UNIT PRICE	QTY.	TOTAL
	Survey and Geotechnical	LS	\$15,000	1	\$15,000
	Design and Engineering (Civil, Structural)	LS	\$60,000	1	\$60,000
				SUBTOTAL	\$75,000

2	Trail and Interstate Underpass Earthwork and Drainage	UNIT	UNIT PRICE	QTY.	TOTAL
	Erosion control measures	LS	\$5,000	1	\$5,000
	Tree protection (protect large trees)	LS	\$250	10	\$2,500
	Trim and clear vegetation and debris (equip., supplies, by volunteers)	LS	\$2,500	1	\$2,500
	Import base stone (#3 and #21A, purchase, haul, place)	TON	\$100	250	\$25,000
	Geotextile/grid (trail base @ poor soils)	SY	\$3	1200	\$3,600
	Cut to fill on site (hand work by volunteers +equip., supplies)	CY	\$8	500	\$4,000
	Field stone walls (by volunteers, + equip., supplies)	FF	\$30	1200	\$36,000
	stabilization fabric and plantings (by volunteers +equip., supplies)	SY	\$15	750	\$11,250
	Trail signage (trail rules, approaches, trespass, interpretive)	EA	\$1,200	8	\$9,600
				SUBTOTAL	\$99,450

3	Pedestrian Bridge A	UNIT	UNIT PRICE	QTY.	TOTAL
	Site preparation and excavation	LS	\$20,000	1	\$20,000
	Pedestrian Bridge A End Walls (screw pilings with steel or concrete cap)	EA	\$24,000	2	\$48,000
	Pedestrian Bridge A channel and bank stabilization	LS	\$55,000	1	\$55,000
	Pedestrian Bridge A super structure	LF	\$1,750	35	\$61,250
	Pedestrian Bridge A deck and railing	LF	\$750	35	\$26,250
	Site stabilization and restoration (topsoil, spread leaf mulch, seed)	LS	\$5,000	1	\$5,000
				SUBTOTAL	\$215,500

4	Railroad Underpass Pavilion	UNIT	UNIT PRICE	QTY.	TOTAL
	Rail Underpass Pavilion site work	LS	\$10,000	1	\$10,000
	Rail Underpass Pavilion footings (excavation, reinforced concrete, post conn)	EA	\$1,200	12	\$14,400
	Rail Underpass Pavilion structure (posts, frame, roofing)	SF	\$120	800	\$96,000
	Rail Underpas Pavilion railroad inspector	HRS	\$100	120	\$12,000
				SUBTOTAL	\$132,400

	PHASE I - SUBTOTAL ITEMS	\$522,350
	Contingency (20%)	\$104,470
	TOTAL FOR ALL CONSTRUCTION	\$626,820