

# PETITION TO UNDERGROUND TRANSMISSION LINES



[https://www.change.org/p/supporting-undergrounding-of-the-aspen-golden-transmission-line?source\\_location=search](https://www.change.org/p/supporting-undergrounding-of-the-aspen-golden-transmission-line?source_location=search)

# PETITION TO USE EXISTING RIGHTS OF WAY



<https://forms.gle/REE9FKDTS8ZFpkAt7>

**ASPEN TO GOLDEN  
UNDERGROUNDING INITIATIVE  
PLEASE SIGN THE  
UNDERGROUNDING PETITION**





# WHO WE ARE


- Concerned Citizens of Loudoun County
- The County of Loudoun
- Community Members of Lansdowne
- Community Members Belmont
- Community Church and its members
- Virginia Academy School
- Responsible Landowners along Route 7 and the Aspen to Golden Route





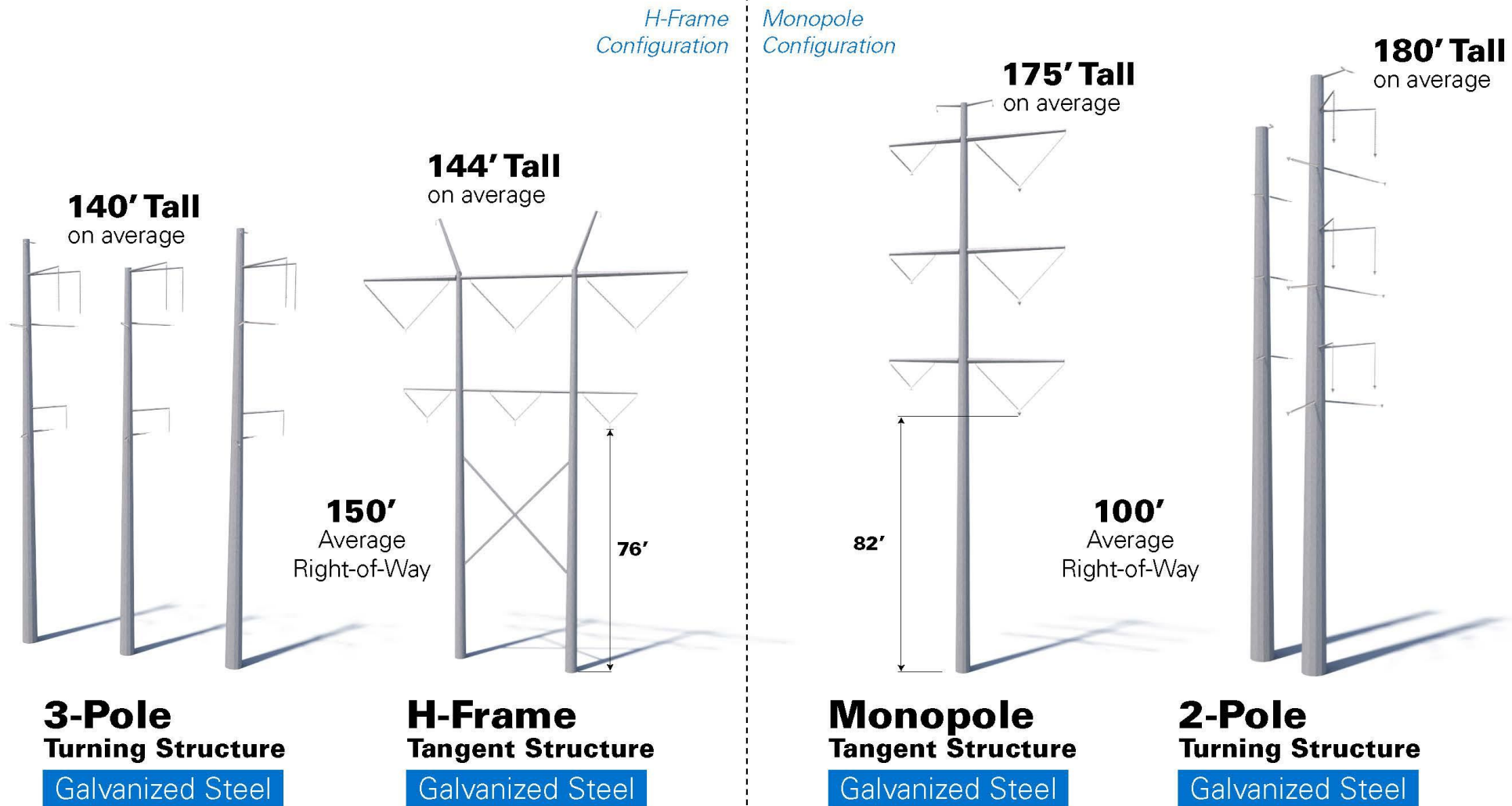
**HOW DID WE GET  
WHERE WE ARE TODAY**

**DOMINION IS REQUIRED  
TO MEET THE  
EXPONENTIAL ENERGY  
LOAD GROWTH IN THE  
AREA**



**DOMINION'S SOLUTION  
TO MEET LOAD GROWTH  
IS TO CONSTRUCT 180'+  
TRANSMISSION TOWERS  
IN SOME OF LOUDOUN'S  
MOST SENSITIVE AREAS**







# ASPEN TO GOLDEN

Transmission Line Project

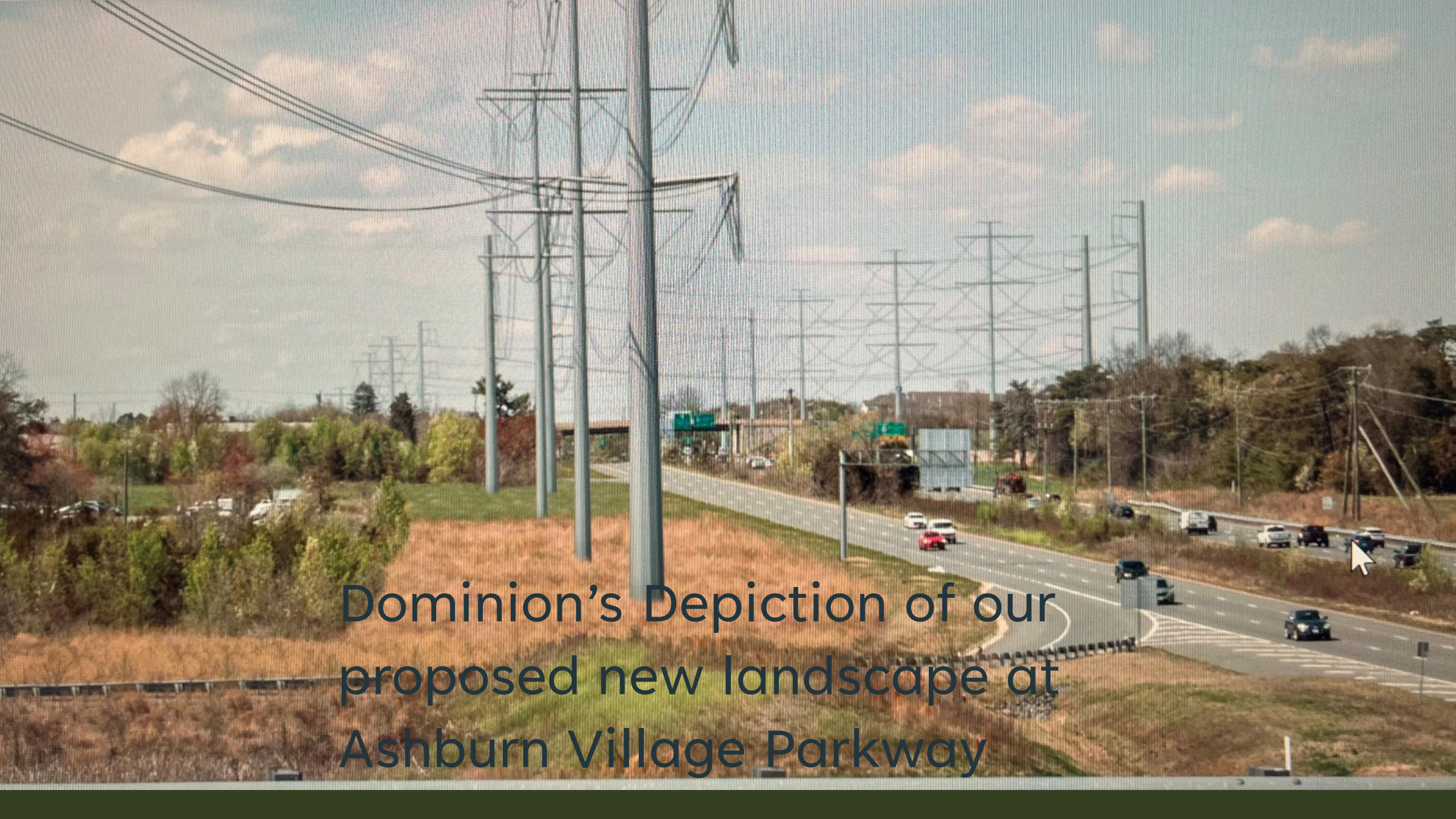
## Photo Location Map



- ① Viewpoint Location
- △ Proposed Substation
- Route 1
- Belmont Variation A
- Belmont Variation B
- Broad Run Variation A
- Broad Run Variation B







Dominion's Depiction of our proposed new landscape at Ashburn Village Parkway



# What is the Lansdowne Conservancy & how Lansdowne Conservancy got involved?

DOMINION INFORMED THE  
LANSDOWNE CONSERVANCY  
OF ITS PLAN TO INSTALL  
500KV/230KV  
TRANSMISSION LINES IN  
MAY 2023

Lansdowne Conservancy is the overarching property association that oversees development in Lansdowne. Some of its members and entities include:

- Lansdowne on the Potomac
- Lansdowne Village Greens
- Lansdowne Woods
- Inova Loudoun Hospital
- Lansdowne Resort
- National Conference Center
- Saul Centers Commercial Association
- Medical Office Facilities
- Seldens Landing Elementary
- Belmont Ridge Middle School
- Riverside High School
- Several small office & residential communities



LANSDOWNE  
CONSERVANCY  
FORMED THE NO  
TOWERS ON 7  
TASKFORCE BECAUSE  
ABOVE GROUND  
TOWERS AND 500KV  
POWERLINES WOULD  
ADVERSELY IMPACT  
ALL PROPERTY  
OWNERS AND THE  
ENTRANCE CORRIDOR  
TO LOUDOUN COUNTY



- **Our community stands united!**
- **We will not fall for the NIMBY trap!**
- **We the People stand together to demand the lines be undergrounded!**
- **Lansdowne, Belmont, Community Church the Loudoun Board of Supervisors and the greater community are fighting together bury these lines!**





# THE UNDERGROUNDING PLAN

## 2 UNDERGROUNDING PROPOSALS

### **Proposal 1 –**

Underground the entirety of the Aspen to Golden route.

1<sup>st</sup> and primary

### **Proposal 2 – Hybrid**

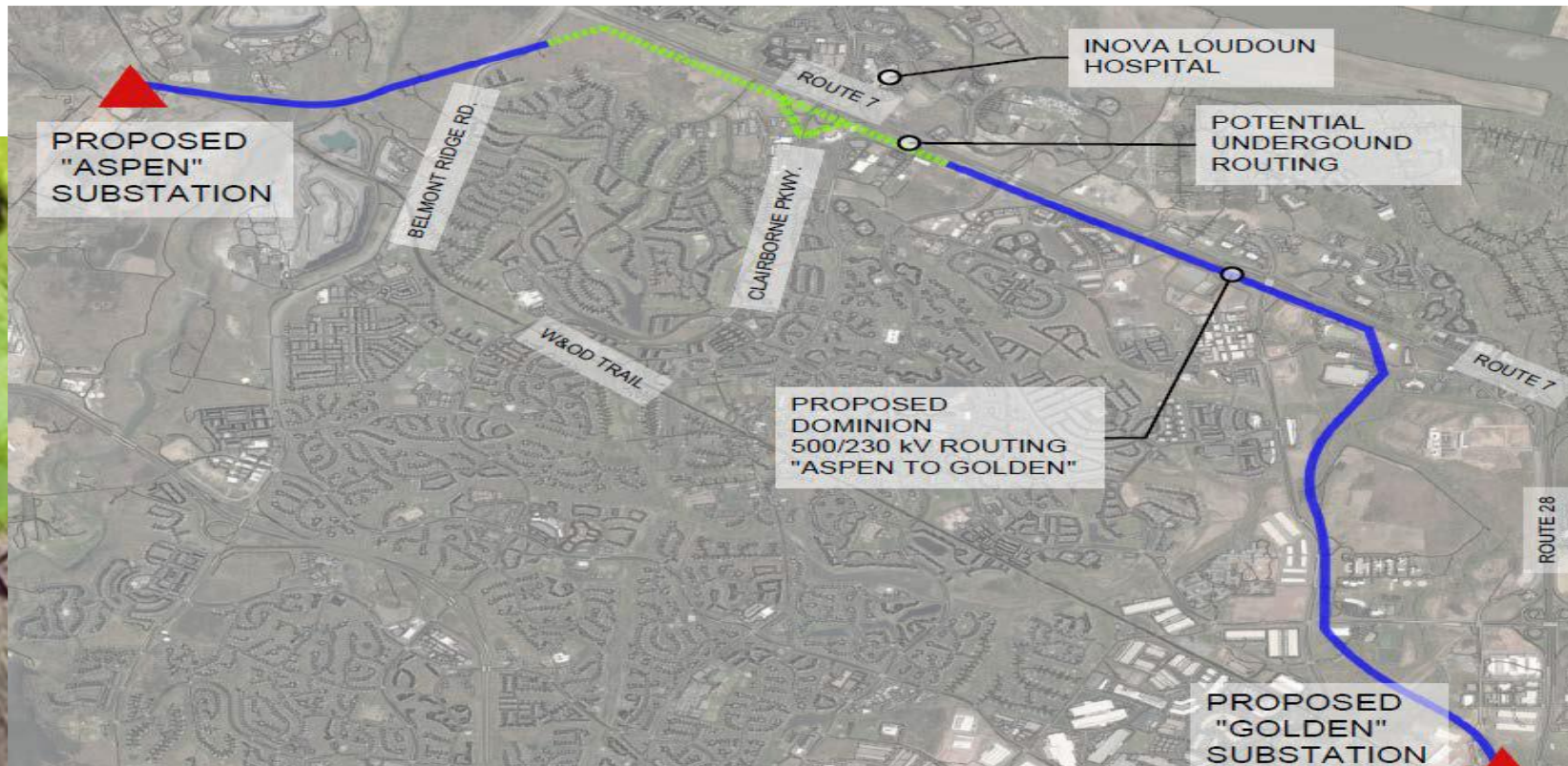
Above ground and below ground lines

Secondary alternative should Commissioners rule against entirety of route



## Proposal 1 – Commissioners considerations in favor of undergrounding

- Quality of Life Consideration
- Significant Negative Impacts on Property Values
- Benefits of requiring underground placement (if requested by locality) – Thank you Board of Supervisors!
- Portion of the route will negatively impact Scenic Assets and Historic Resources

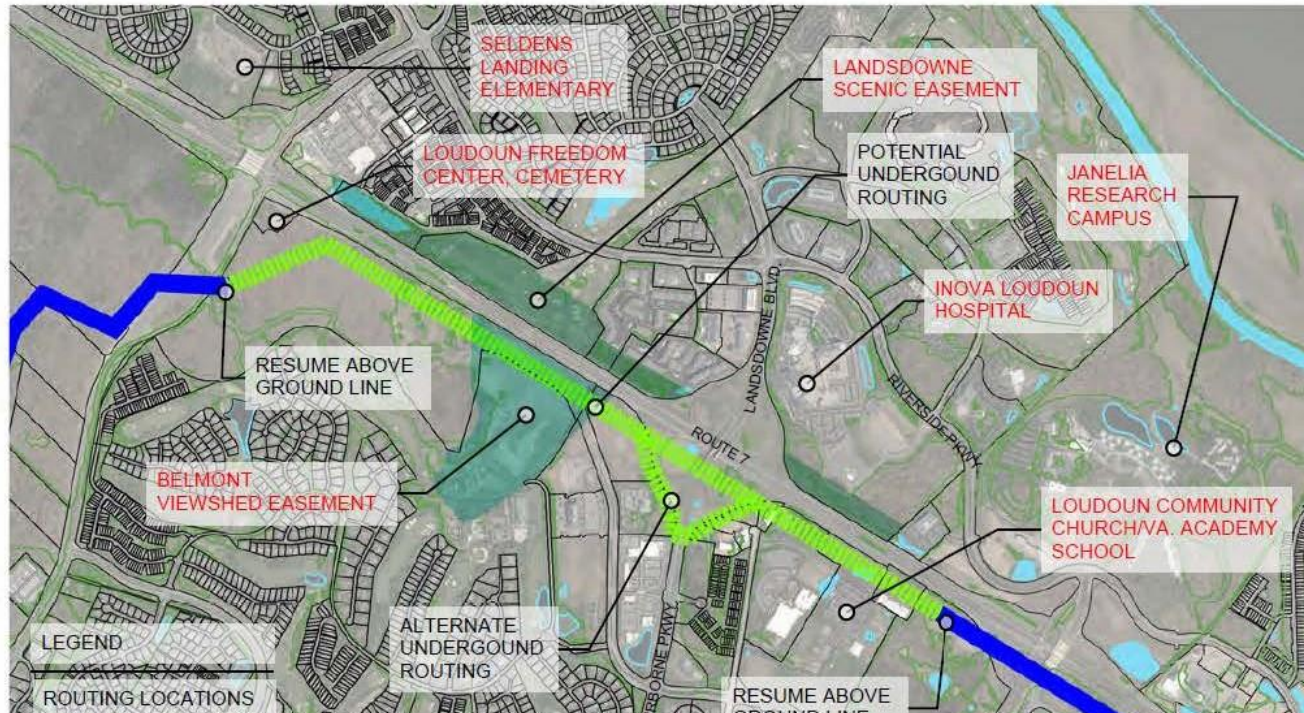




## Proposal 2 – Hybrid Alternative – Commissioners considerations in favor of undergrounding

- Quality of Life Consideration
- Significant Negative Impacts on Property Values
- Benefits of requiring underground placement (if requested by locality) – Thank you Board of Supervisors!
- Protection of Scenic Assets
- Protection of Historic Resources & Sensitive Areas
- Minimal Impacts to Environmental Impacts
- Feasible Engineering and meets Dominion's time to complete project

### Impacted Scenic Assets, Historic Resources, and Sensitive Areas Along the Aspen to Golden Project





## UNDERGROUNDING PETITION

Here is a Petition you  
can sign to support  
undergrounding the  
Aspen to Golden  
Transmission lines!







## **Challenges to Undergrounding 500kV transmission lines**

- We are up against a billion dollar monopoly corporation that is historically against undergrounding solutions
- To date, 500kV have not generally been undergrounded in the U.S.

# WHY THE UNDERGROUNDING PROPOSAL HAS POTENTIAL FOR APPROVAL BY THE SCC

1. Proposals for undergrounding 500kV lines were previously made in Loudoun County

## Right-of-Way/Land Usage Risk Analysis

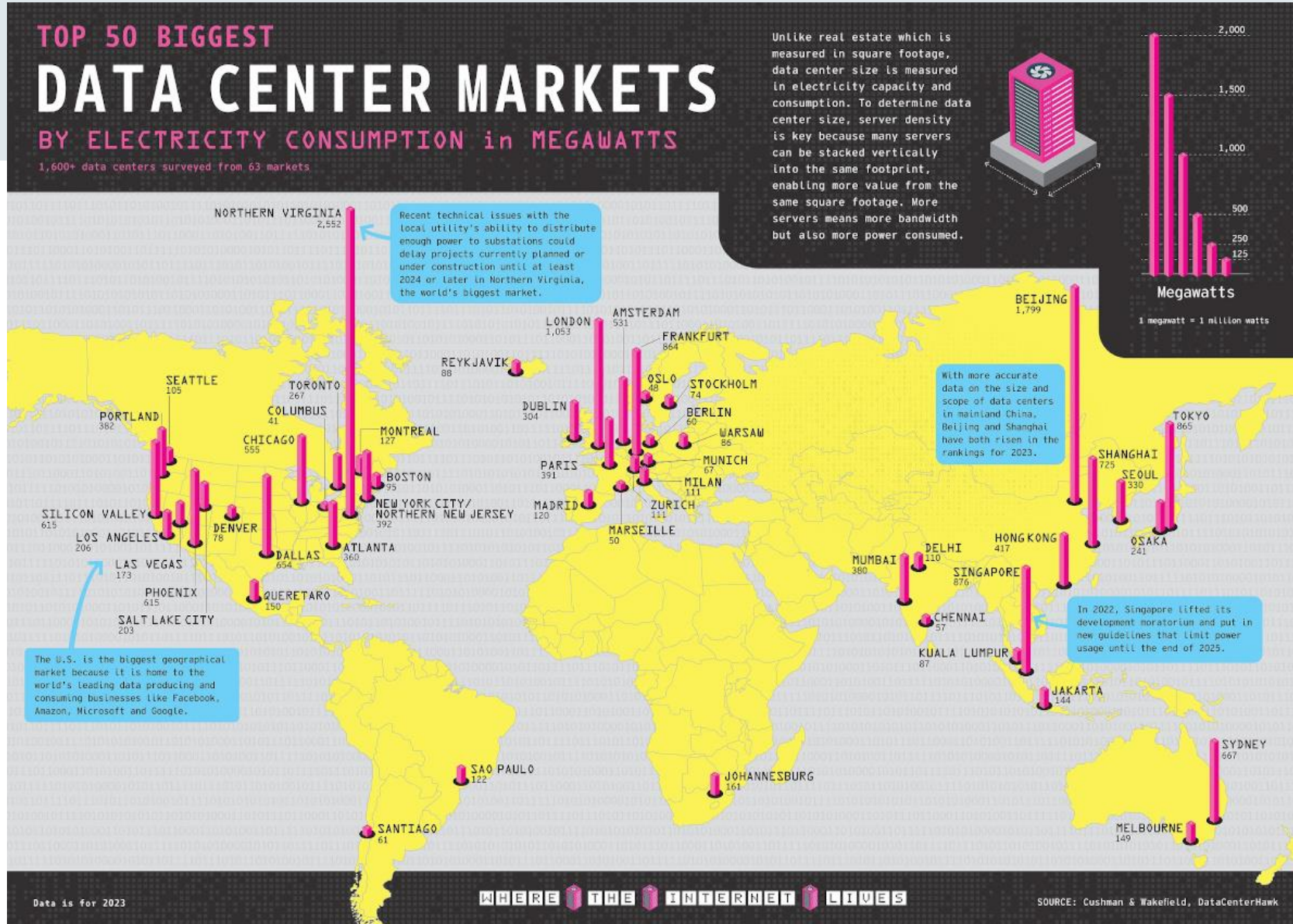
### *New Stork to Flys 500 kV Underground Line*

The main transmission line component for this proposal is the Storks-Flys 500 kV underground cable line, which is 5.04 miles long. The proposed route is entirely within public road right of way, and the proposed facilities are expected to occupy a 50 ft. corridor, with the specific plans to use the median of the public roads – Loudoun County Pkwy. and Ryan Rd., which are large, divided thoroughfares.



# WHY THE UNDERGROUNDING PROPOSAL HAS POTENTIAL FOR APPROVAL BY THE SCC

## 2. Loudoun County is the Data Center Capital of the World



# WHY THE UNDERGROUNDING PROPOSAL HAS POTENTIAL FOR APPROVAL BY THE SCC

## 3. 500 kV lines are buried all over the world

Europe – Asia – Australia routinely bury 500kV lines

### California Public Utilities Commission

505 Van Ness Ave., San Francisco

FOR IMMEDIATE RELEASE PRESS RELEASE

Media Contact: Terrie Prosper, 415.703.1366, news@cpuc.ca.gov Docket #: A.07-06-031

### CPUC APPROVES UNDERGROUNDING OF TEHACHAPI TRANSMISSION LINE THROUGH CITY OF CHINO HILLS

**SAN FRANCISCO, July 11, 2013** - The California Public Utilities Commission (CPUC) today granted the request of the City of Chino Hills to underground a segment of Southern California Edison's Tehachapi Renewable Transmission Project, finding that the design of the above ground line effectively ignores community values and places an unfair and unreasonable burden on residents.

Currently, the 3.5 mile segment of the 500 kilovolt transmission line running through Chino Hills consists of massive transmission towers reaching 195-198 feet tall (more than double the height of the prior 75 foot structures) and set in a narrow 150-foot right of way. Today's decision rectifies that disproportionate burden and finds that it is in the public interest to construct an underground alternative based on a single circuit, two cables per phase design using cross linked polyethylene cable.



# WHY THE UNDERGROUNDING PROPOSAL HAS POTENTIAL FOR APPROVAL BY THE SCC

## 4. Undergrounding Avoids Catastrophic Events



# WHY THE UNDERGROUNDING PROPOSAL HAS POTENTIAL FOR APPROVAL BY THE SCC

## 5. Widespread Public Support For Undergrounding

### **East, West Join Forces in Power Line Battle!!!**

[https://www.loudounnow.com/news/east-west-join-forces-in-power-line-battle/article\\_7d786d0e-22d5-11ef-bb4f-4f4509f443e5.html](https://www.loudounnow.com/news/east-west-join-forces-in-power-line-battle/article_7d786d0e-22d5-11ef-bb4f-4f4509f443e5.html)

### **Lansdowne residents oppose Route 7 transmission line proposal**

[https://www.loudountimes.com/news/lansdowne-residents-oppose-route-7-transmission-line-proposal/article\\_46190288-639f-11ee-9908-7722c63f7ffd.html](https://www.loudountimes.com/news/lansdowne-residents-oppose-route-7-transmission-line-proposal/article_46190288-639f-11ee-9908-7722c63f7ffd.html)

### **Lansdowne residents, Dominion spar again over proposed transmission lines**

[https://www.loudountimes.com/news/lansdowne-residents-dominion-spar-again-over-proposed-transmission-lines/article\\_50db689a-7c3c-11ee-aac2-7b84d429aa32.html](https://www.loudountimes.com/news/lansdowne-residents-dominion-spar-again-over-proposed-transmission-lines/article_50db689a-7c3c-11ee-aac2-7b84d429aa32.html)

### **Loudoun Supervisors to Push for Underground Power Lines in New Dominion Project**

[https://www.loudounnow.com/news/loudoun-supervisors-to-push-for-underground-power-lines-in-new-dominion-project/article\\_f833b464-f2b9-11ee-9a09-b3b7acaf895e.html](https://www.loudounnow.com/news/loudoun-supervisors-to-push-for-underground-power-lines-in-new-dominion-project/article_f833b464-f2b9-11ee-9a09-b3b7acaf895e.html)

### **Lansdowne Residents Decry Dominion's Rt. 7 Power Line Project**

[https://www.loudounnow.com/news/lansdowne-residents-decry-dominion-s-rt-7-power-line-project/article\\_96ee4c24-7a8b-11ee-b590-2fc89e51dd8c.html](https://www.loudounnow.com/news/lansdowne-residents-decry-dominion-s-rt-7-power-line-project/article_96ee4c24-7a8b-11ee-b590-2fc89e51dd8c.html)



## WHY THE UNDERGROUNDING PROPOSAL HAS POTENTIAL FOR APPROVAL BY THE SCC

### **6. The Aspen to Golden Undergrounding Project can serve as a trailblazer for other projects that will be traversing through our communities**

Four new transmission projects have just been announced in Loudoun County; The Aspen to Golden project can serve as an example where scenic assets, historic designation, green space and cultural resources will be irreparably harmed by above ground transmission lines

Our utility companies need to have in their tool set the willingness and ability to underground lines in appropriate locations

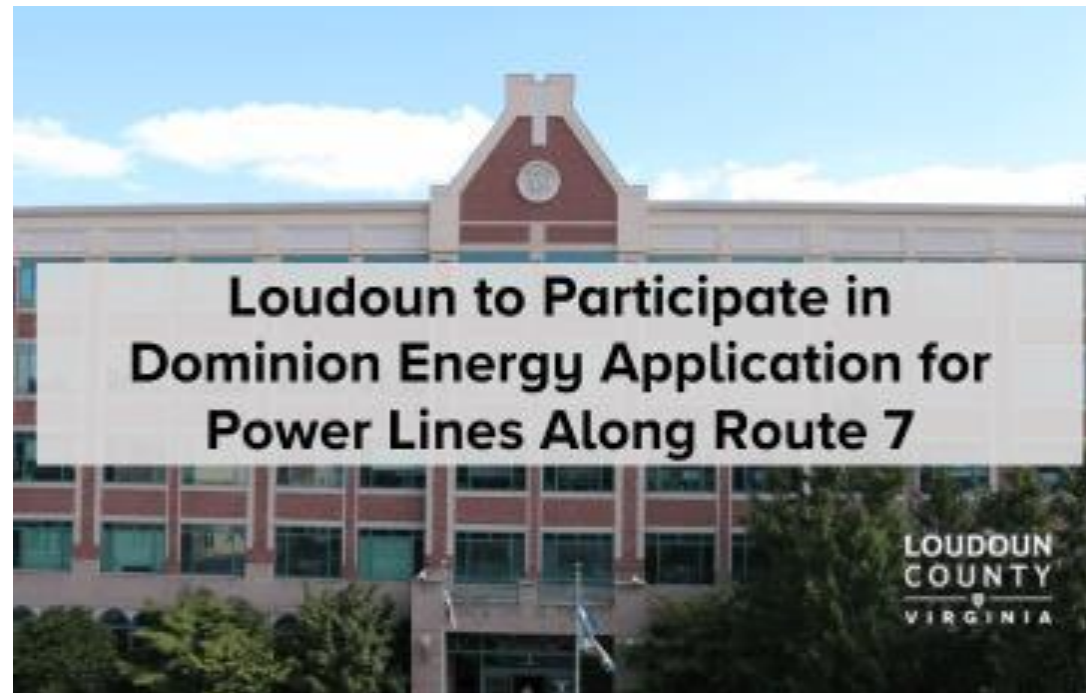
# WHY THE UNDERGROUNDING PROPOSAL HAS POTENTIAL FOR APPROVAL BY THE SCC

**7. The County of Loudoun voted to intervene at the State Corporation Commission and fight for Undergrounding – Thank you Loudoun County Board of Supervisors!**

## **County News**

Posted on: April 4, 2024

**Loudoun to Participate in Dominion Energy’s Case for Proposed Power Lines Along Route 7**





## WHY THE UNDERGROUNDING PROPOSAL HAS POTENTIAL FOR APPROVAL BY THE SCC

**8. We have heard the same rhetoric before: that it can't be done! Joe May is the face of why it can be done. These same arguments were made 16 years ago with 230kV lines and yet despite Dominion's claims it was not feasible the underground project was huge success. These buried lines along the W&OD Trail are unnoticeable today.**



# WHY THE UNDERGROUNDING PROPOSAL HAS POTENTIAL FOR APPROVAL BY THE SCC

9. The undergrounding initiative meets the requirements the SCC Commissioners look to when approving a line to be buried

§ 56-46.1 of the Code of Virginia

SCC Commissioners Considerations in determining whether to bury the lines

Standard:	
(1)	the line is needed; and
(2)	the route will avoid or reasonably minimize adverse impact to the greatest extent reasonably practicable on scenic assets, historic resources, and the environment.
Source	Factors for Consideration
§ 56-46.1(B)	Minimized impact on scenic assets
§ 56-46.1(B)	Minimized impact on historic resources recorded with DHR
§ 56-46.1(B)	Minimized impact on the environment of the concerned area
§ 56-46.1(B)	Costs and economic benefits from requiring underground placement (if requested by locality)
§ 56-46.1(B)	Potential impediments to timely construction of the line (if requested by locality)
BASF Corp. v. SCC	Magnitude and timing of the need for the facility
BASF Corp. v. SCC	Cost of construction (not dispositive)
§ 56-46.1(A)	Effect on the environment (establish conditions to minimize impacts)
§ 56-46.1(A)	Economic development in the Commonwealth
§ 56-46.1(A)	Improvements in service reliability
§ 56-46.1(C)	Existing ROWs
VEJA	Fair treatment to Environmental Justice/Fenceline Communities



WHY THE UNDERGROUNDING PROPOSAL HAS POTENTIAL FOR  
APPROVAL BY THE SCC

**10. OUR COMMUNITY DEMANDS IT AND  
IT IS THE RIGHT THING TO DO!!!**



HOW YOU CAN HELP?!



# HOW YOU CAN HELP!

SIGN AND SHARE THE PETITION



# HOW YOU CAN HELP!

PROVIDE PUBLIC COMMENT TO COMMISSIONERS TO  
SUPPORT THE UNDERGROUND PROPOSAL

## **Case Comments for PUR-2024-00032**

<https://scc.virginia.gov/casecomments/comment/PUR-2024-00032>

“Please protect our scenic assets by ordering these lines underground!”

“Please protect our property values by ordering these lines underground!”

“Please protect our historic designations by ordering these lines underground!”





**HOW YOU CAN HELP!**

**COME OUT TO THE LOCAL  
SCC HEARING**

# DAVID VS. GOLIATH

- Joe May is our David.
- The Loudoun County Board of Supervisors is our David.
- Many of our State Legislators are our David.
- The Community Church is our David.
- Lansdowne is our David.
- Belmont is our David.
- The PEC is our David.
- The Loudoun Transmission Line Alliance is our David.
- And each and every one of you in this room and our community is our David!





**NO TOWERS ON**



**BURY THE LINES!!!**



THANK YOU LOUDOUN COUNTY!

