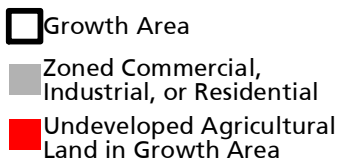
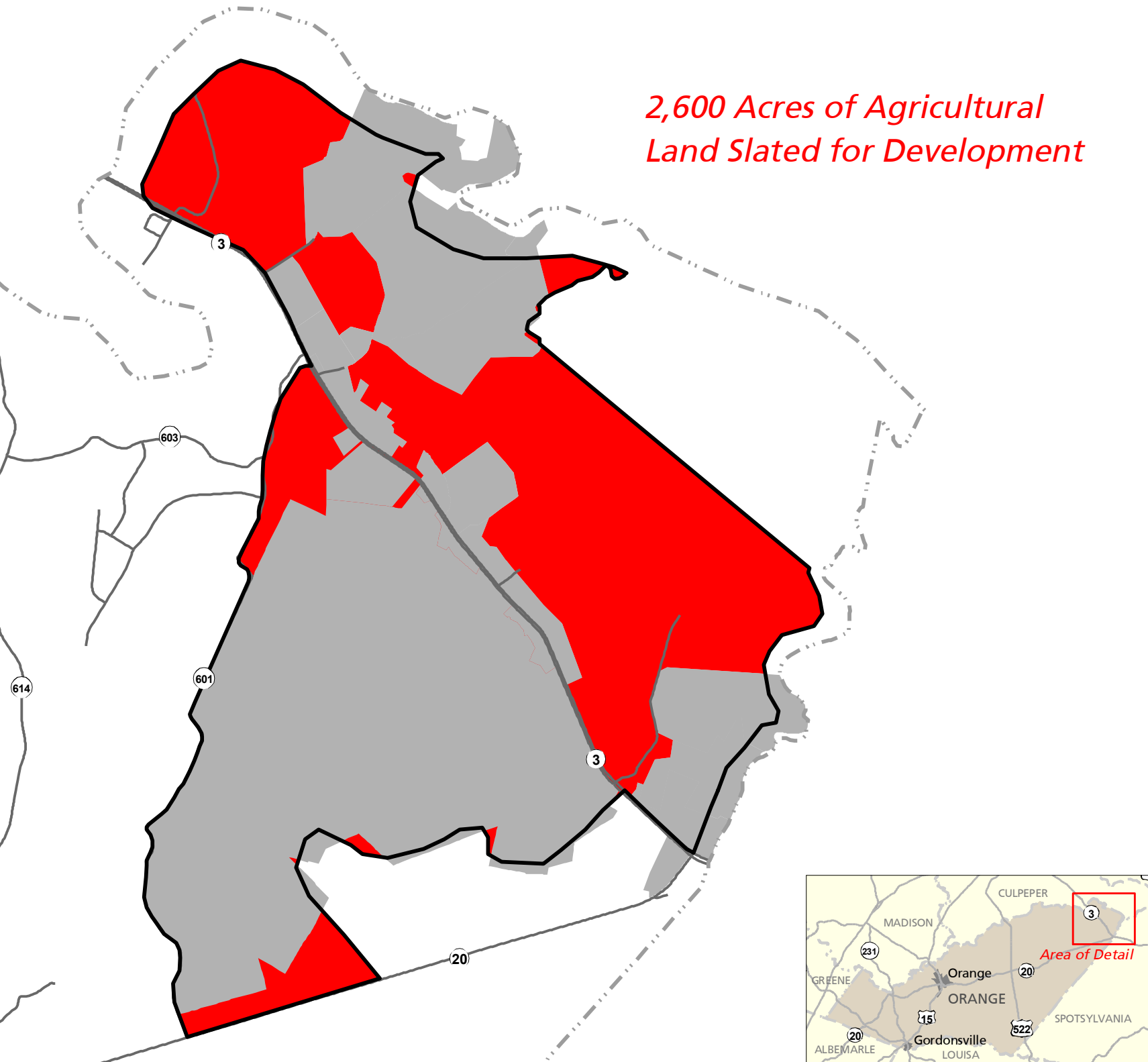



# Planned Land Use and Zoning Rt 3 Corridor Orange County

*2,600 Acres of Agricultural  
Land Slated for Development*

  
Growth Area  
Zoned Commercial,  
Industrial, or Residential  
Undeveloped Agricultural  
Land in Growth Area

0 0.25 0.5  
Miles



Map created by PEC for presentation purposes only. Data source: Orange County, Aerial Imagery © 2006 Commonwealth of Virginia. Although efforts have been made to verify data, accuracy is not guaranteed. For more information, please visit [www.pecva.org](http://www.pecva.org). Sept 22, 2008

